

RLN3 Antibody
Catalog # ASC11924**Specification**

RLN3 Antibody - Product Information

Application	WB, IF
Primary Accession	Q8WFX3
Other Accession	NP_543140 , 18254464
Reactivity	Human
Host	Rabbit
Clonality	Polyclonal
Isotype	IgG
Calculated MW	Predicted: 16 kDa; Observed: 20 kDa
Application Notes	KDa RLN3 antibody can be used for detection of RLN3 by Western blot at 1 - 2 µg/ml. For immunofluorescence start at 20 µg/mL.

RLN3 Antibody - Additional InformationGene ID **117579****Target/Specificity**

RLN3; RLN3 antibody is human specific. RLN3 antibody is predicted to not cross-react with other members of the Relaxin protein family.

Reconstitution & Storage

RLN3 antibody can be stored at 4°C for three months and -20°C, stable for up to one year.

Precautions

RLN3 Antibody is for research use only and not for use in diagnostic or therapeutic procedures.

RLN3 Antibody - Protein Information**Name** mt-cyb**Synonyms** cob, cytb, mtcyb**Function**

Component of the ubiquinol-cytochrome c reductase complex (complex III or cytochrome b-c1 complex) that is part of the mitochondrial respiratory chain. The b-c1 complex mediates electron transfer from ubiquinol to cytochrome c. Contributes to the generation of a proton gradient across the mitochondrial membrane that is then used for ATP synthesis.

Cellular Location

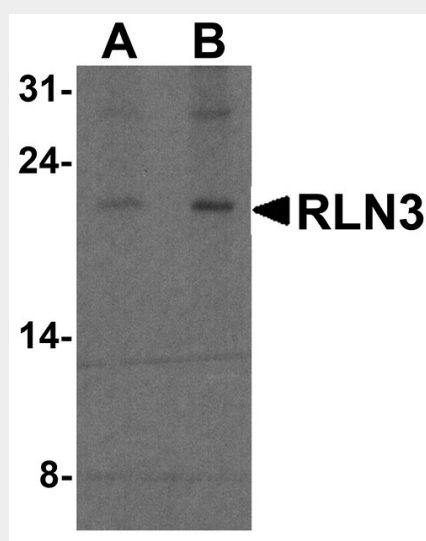
Mitochondrion inner membrane {ECO:0000250|UniProtKB:P00157}; Multi-pass membrane protein {ECO:0000250|UniProtKB:P00157}

RLN3 Antibody - Protocols

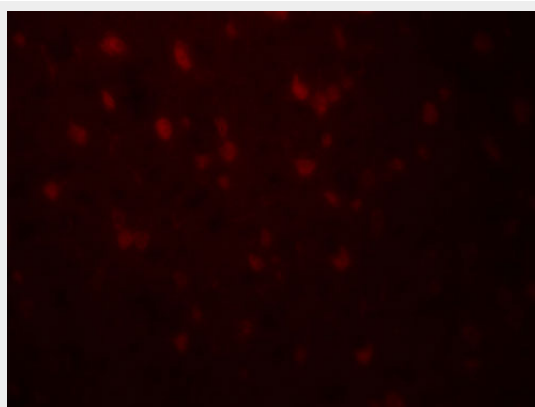
Provided below are standard protocols that you may find useful for product applications.

- [Western Blot](#)
- [Blocking Peptides](#)
- [Dot Blot](#)
- [Immunohistochemistry](#)
- [Immunofluorescence](#)
- [Immunoprecipitation](#)
- [Flow Cytometry](#)
- [Cell Culture](#)

RLN3 Antibody - Images



Western blot analysis of RLN3 in human brain tissue lysate with RLN3 antibody at (A) 1 and (B) 2 µg/ml.



Immunofluorescence of RLN3 in human brain tissue with RLN3 antibody at 20 µg/mL.

RLN3 Antibody - Background

Relaxin-3 (RLN3) is a member of Relaxin family, a group of endocrine and autocrine/paracrine hormones that belong to the insulin gene superfamily (1,2). RLN3 can bind to and activate three relaxin-family peptide receptors: RXFP1, RXFP3, and RXFP4 (3). In contrast to the widespread expression of the related proteins RLN1 and RLN2, RLN3 is predominantly expressed in brain and to

a lesser extent in the thymus, kidney and spleen (1). RLN3 has been suggested to play a role in feeding, metabolism, stress, arousal, learning, and memory (4).

RLN3 Antibody - References

Bathgate RA, Samuel CS, Burazin TC, et al. Human relaxin gene 3 (H3) and the equivalent mouse relaxin (M3) gene. Novel members of the relaxin peptide family. J. Biol. Chem. 2002; 277:1148-57.

Wilkinson TN and Bathgate RA. The evolution of the relaxin peptide family and their receptors. Adv. Exp. Med. Biol. 2007; 612:1-13.

Silvertown JD, Neschadim A, Liu HN, et al. Relaxin-3 and receptors in the human and rhesus brain and reproductive tissues. Regul. Pept. 2010; 159:44-53.

Bathgate RAD, Halls ML, van der Westhuizen ET, et al. Relaxin family peptides and their receptors. Physiol. Rev. 2012; 93:405-80.