

**INPP4B Antibody**  
**Catalog # ASC11951****Specification**

---

**INPP4B Antibody - Product Information**

Application	WB
Primary Accession	<a href="#">Q9BS68</a>
Other Accession	<a href="#">NP_003857</a> , <a href="#">156104895</a>
Reactivity	Human, Mouse, Rat
Host	Rabbit
Clonality	Polyclonal
Isotype	IgG
Calculated MW	Predicted: 102 kDa
Application Notes	Observed: 100 kDa KDa INPP4B antibody can be used for detection of INPP4B by Western blot at 1 - 2 µg/ml.

**INPP4B Antibody - Additional Information**Gene ID **8821****Target/Specificity**

INPP4B; INPP4B antibody is human, mouse and rat reactive. At least two isoforms of INPP4B are known to exist; this antibody only detects the longer isoform. INPP4B antibody is predicted to not cross-react with INPP4A.

**Reconstitution & Storage**

INPP4B antibody can be stored at 4°C for three months and -20°C, stable for up to one year.

**Precautions**

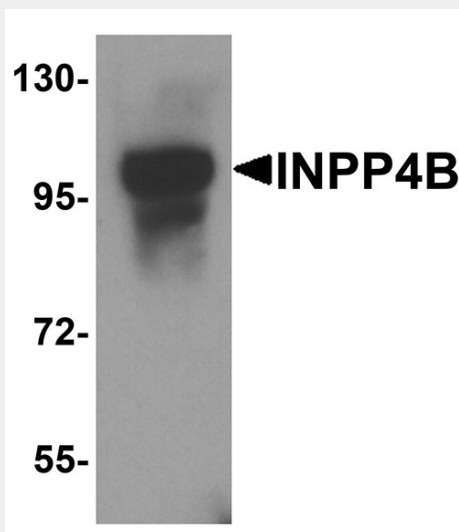
INPP4B Antibody is for research use only and not for use in diagnostic or therapeutic procedures.

**INPP4B Antibody - Protein Information****INPP4B Antibody - Protocols**

Provided below are standard protocols that you may find useful for product applications.

- [Western Blot](#)
- [Blocking Peptides](#)
- [Dot Blot](#)
- [Immunohistochemistry](#)
- [Immunofluorescence](#)
- [Immunoprecipitation](#)
- [Flow Cytometry](#)
- [Cell Culture](#)

## INPP4B Antibody - Images



Western blot analysis of INPP4B in 3T3 cell lysate with INPP4B antibody at 1 µg/ml.

## INPP4B Antibody - Background

Inositol polyphosphate 4-phosphatase type II (INPP4B) is one of the enzymes involved in phosphatidylinositol signaling pathways. It removes the phosphate group at position 4 of the inositol ring from inositol 3,4-bisphosphate (1). INPP4B can function as a tumor suppressor by inhibiting PI3K signaling. In human epithelial cells, knockdown of INPP4B expression resulted in enhanced Akt activation, anchorage-independent growth, and enhanced overall motility (2). It is thought INPP4B may also have oncogenic functions as INPP4B-dependent PI3K signaling is mediated by SGK3 in breast cancer cells and expression of INPP4B leads to enhanced SGK3 activation and suppression of AKT phosphorylation (3).

## INPP4B Antibody - References

Norris FA, Auethavekiat V, and Majerus PW. The isolation and characterization of cDNA encoding human and rat brain inositol polyphosphate 4-phosphatase. *J. Biol. Chem.* 1995; 270:16128-33.  
Gewinner C, Wang ZC, Richardson A, et al. Evidence that inositol polyphosphate 4-phosphatase type II is a tumor suppressor that inhibits PI3K signaling. *Cancer Cell* 2009; 16:115-25.  
Gasser JA, Inuzuka H, Lau AW, et al. SGK3 mediates INPP4B-dependent PI3K signaling in breast cancer. *Mol. Cell* 2014; 56:595-607.