

**BCLAF1 Antibody**  
**Catalog # ASC11960****Specification**

---

**BCLAF1 Antibody - Product Information**

Application	WB, IHC, E
Primary Accession	<a href="#">Q9NYF8</a>
Other Accession	<a href="#">NP_055554</a> , <a href="#">7661958</a>
Reactivity	Human, Mouse, Rat
Host	Rabbit
Clonality	Polyclonal
Isotype	IgG
Calculated MW	Predicted: 101 kDa; Observed: 105 kDa
Application Notes	KDa BCLAF1 antibody can be used for detection of BCLAF1 by Western blot at 0.5 - 1 µg/ml. Antibody can also be used for immunohistochemistry starting at 5 µg/mL.

**BCLAF1 Antibody - Additional Information**Gene ID **9774****Target/Specificity**

BCLAF1; BCLAF1 antibody is human, mouse and rat reactive. At least four isoforms of BCLAF1 are known to exist; this antibody will detect all but isoform 2.

**Reconstitution & Storage**

BCLAF1 antibody can be stored at 4°C for three months and -20°C, stable for up to one year.

**Precautions**

BCLAF1 Antibody is for research use only and not for use in diagnostic or therapeutic procedures.

**BCLAF1 Antibody - Protein Information****Name** BCLAF1**Synonyms** BTF, KIAA0164**Function**

Death-promoting transcriptional repressor. May be involved in cyclin-D1/CCND1 mRNA stability through the SNARP complex which associates with both the 3'end of the CCND1 gene and its mRNA.

**Cellular Location**

Cytoplasm. Nucleus. Nucleus speckle. Nucleus, nucleoplasm

**Tissue Location**

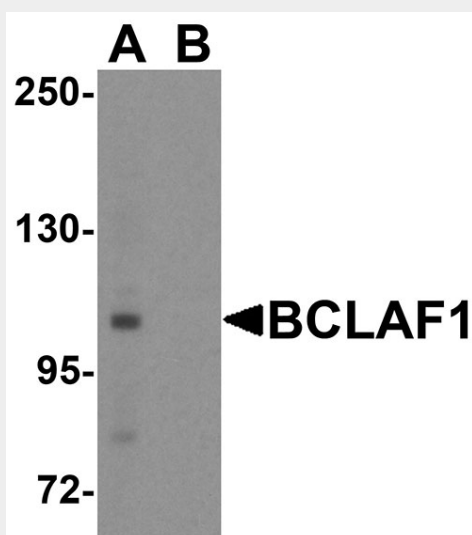
Ubiquitous.

## BCLAF1 Antibody - Protocols

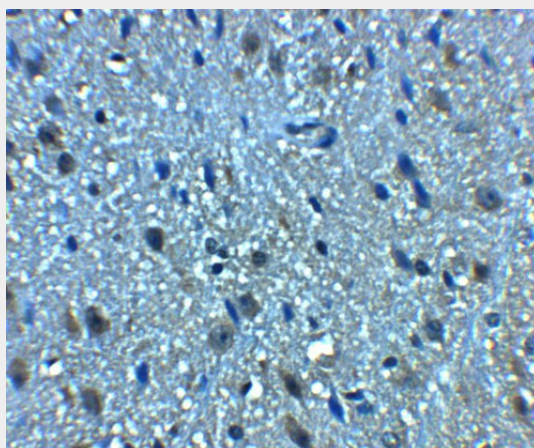
Provided below are standard protocols that you may find useful for product applications.

- [Western Blot](#)
- [Blocking Peptides](#)
- [Dot Blot](#)
- [Immunohistochemistry](#)
- [Immunofluorescence](#)
- [Immunoprecipitation](#)
- [Flow Cytometry](#)
- [Cell Culture](#)

## BCLAF1 Antibody - Images



Western blot analysis of BCLAF1 in human brain tissue lysate with BCLAF1 antibody at 1  $\mu$ g/ml.



Immunohistochemistry of BCLAF1 in mouse brain tissue with BCLAF1 antibody at 5  $\mu$ g/mL.

## BCLAF1 Antibody - Background

The BCL2-associated transcription factor 1 (BCLAF1) is a transcriptional repressor that interacts with several members of the BCL2 family of proteins. Overexpression of this protein induces

apoptosis, which can be suppressed by co-expression of BCL2 proteins (1). BCLAF1 localizes to dot-like structures throughout the nucleus, and redistributes to a zone near the nuclear envelope in cells undergoing apoptosis. (2). More recent studies have suggested BCLAF1 plays roles in processes not associated with actions of the BCL2 family members, including lung development, T cell activation, and post-transcriptional processes that affect mRNA metabolism (3).

#### **BCLAF1 Antibody - References**

Kasof GM, Goyal L, and White E. Btf, a novel death-promoting transcriptional repressor that interacts with Bcl-2-related proteins. *Mol. Cell Biol.* 1999; 19:4390-404.  
Haraguchi T, Holaska JM, Yamana M, et al. Emerin binding to Btf, a death-promoting transcriptional repressor, is disrupted by a missense mutation that causes Emery-Dreifuss muscular dystrophy. *Eur. J. Biochem.* 2004; 271:1035-45.  
Sarras H, Azami SA, and McPherson JP. In search of a function for BCLAF1. *The Scientific World Journal* 2010; 10:1450-61.