

CHADL Antibody
Catalog # ASC11963**Specification**

CHADL Antibody - Product Information

Application	IF
Primary Accession	Q6NUI6
Other Accession	NP_612490 , 150356
Reactivity	Human, Mouse, Rat
Host	Rabbit
Clonality	Polyclonal
Isotype	IgG
Calculated MW	Predicted: 84 kDa

Application Notes

Observed: 86 kDa KDa
CHADL antibody can be used for the detection of CHADL by Western blot at 1 - 2 µg/mL. Antibody can also be used for Immunohistochemistry starting at 5 µg/mL.

CHADL Antibody - Additional InformationGene ID **150356****Target/Specificity**

CHADL antibody was raised against a 19 amino acid peptide from near the carboxy terminus of human CHADL.
The immunogen is located within the last 50 amino acids of CHADL.

Reconstitution & Storage

CHADL antibody can be stored at 4°C for three months and -20°C, stable for up to one year.

Precautions

CHADL Antibody is for research use only and not for use in diagnostic or therapeutic procedures.

CHADL Antibody - Protein Information**Name** CHADL**Synonyms** SLRR4B**Function**

Potential negative modulator of chondrocyte differentiation. Inhibits collagen fibrillogenesis in vitro. May influence chondrocyte's differentiation by acting on its cellular collagenous microenvironment.

Cellular Location

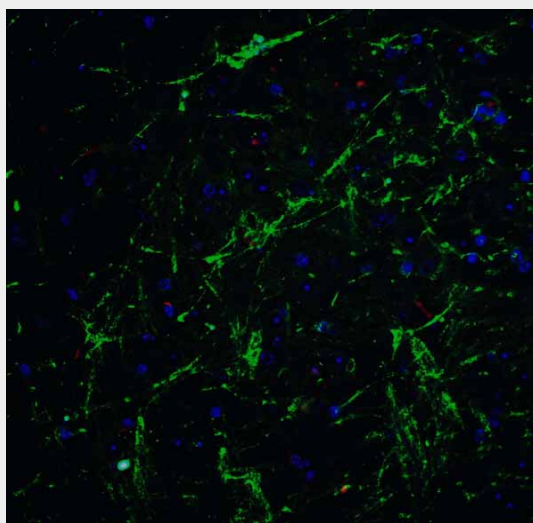
Secreted. Secreted, extracellular space, extracellular matrix {ECO:0000250|UniProtKB:E9Q7T7}

CHADL Antibody - Protocols

Provided below are standard protocols that you may find useful for product applications.

- [Western Blot](#)
- [Blocking Peptides](#)
- [Dot Blot](#)
- [Immunohistochemistry](#)
- [Immunofluorescence](#)
- [Immunoprecipitation](#)
- [Flow Cytometry](#)
- [Cell Culture](#)

CHADL Antibody - Images



Immunofluorescence of SOX2 in mouse brain tissue with SOX2 Antibody at 20 µg/mL.

CHADL Antibody - Background

The Chondroadherin-like (CHADL) protein, also known as SLRR4B, is homologous to the Chondroadherin protein and is expressed in cartilaginous tissues (1). Like Chondroadherin, CHADL belongs to the small leucine-rich proteoglycan (SLRP) family and class IV subfamily and plays a significant role in the regulation of chondrocyte growth and proliferation (1,2). CHADL is thought to play a negative regulatory role in collagen fibrillogenesis and chondrocyte differentiation (1).

CHADL Antibody - References

- Tillgren V, Ho JC, Onnerfjord P, et al. The novel small leucine-rich protein chondroadherin-like (CHADL) is expressed in cartilage and modulates chondrocyte differentiation. *J. Biol. Chem.* 2015; 290:918-25.
- Neame PJ, Sommarin Y, Boynton RE, et al. The structure of a 38-kDa leucine-rich protein (chondroadherin) isolated from bovine cartilage. *J. Biol. Chem.* 1994; 269:21547-54.