

C18orf42 Antibody
Catalog # ASC11968**Specification**

C18orf42 Antibody - Product Information

Application	IF, IHC
Primary Accession	P0CW23
Other Accession	NP_001138666 , 642597
Reactivity	Human
Host	Rabbit
Clonality	Polyclonal
Isotype	IgG
Calculated MW	Predicted: 8 kDa

Application Notes

Observed: 12 kDa KDa
C18orf42 antibody can be used for the detection of C18orf42 by Western blot at 1 - 2 µg/mL. Antibody can also be used for Immunocytochemistry starting at 2 µg/mL. For immunofluorescence start at 2 µg/mL.

C18orf42 Antibody - Additional InformationGene ID **642597****Target/Specificity**

C18orf42 antibody was raised against a 16 amino acid peptide from near the center of human C18orf42.

The immunogen is located within the last 50 amino acids of C18orf42.

Reconstitution & Storage

C18orf42 antibody can be stored at 4°C for three months and -20°C, stable for up to one year.

Precautions

C18orf42 Antibody is for research use only and not for use in diagnostic or therapeutic procedures.

C18orf42 Antibody - Protein InformationName AKAIN1 ([HGNC:28285](#))**Synonyms** C18orf42**Function**

Protein kinase A (PKA)-binding protein. Binds to type II regulatory subunits of protein kinase A (PKA) and may block the A- kinase anchoring protein (AKAP)-mediated subcellular localization of PKA (PubMed:25653177).

Tissue Location

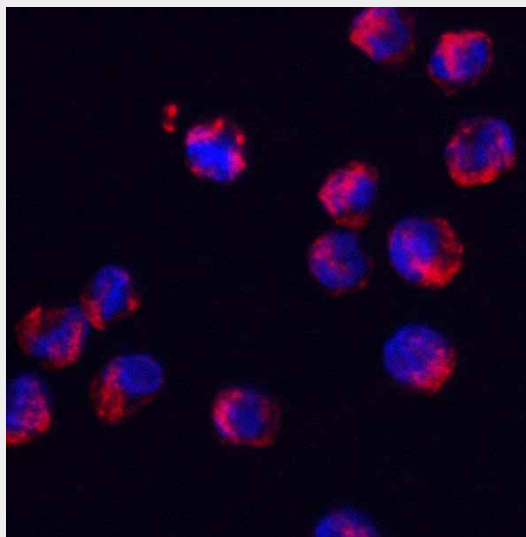
Preferentially expressed in the neural tissues (PubMed:25653177).

C18orf42 Antibody - Protocols

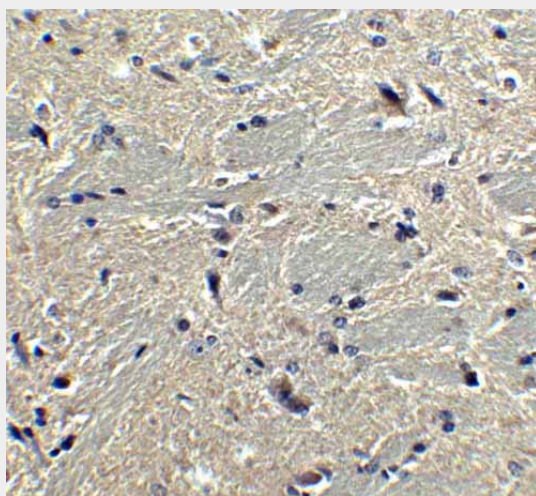
Provided below are standard protocols that you may find useful for product applications.

- [Western Blot](#)
- [Blocking Peptides](#)
- [Dot Blot](#)
- [Immunohistochemistry](#)
- [Immunofluorescence](#)
- [Immunoprecipitation](#)
- [Flow Cytometry](#)
- [Cell Culture](#)

C18orf42 Antibody - Images



Immunofluorescence of SRSF3 in K562 cells with SRSF3 antibody at 2 µg/mL.



Immunohistochemistry of Rheb in mouse brain tissue with Rheb antibody at 5 µg/ml.

C18orf42 Antibody - Background

Little is known of the function of the protein encoded by Chromosome 18 open reading frame 18

(C18orf42), but it is preferentially expressed in neuronal tissue (1). It is thought to bind to the cAMP-dependent protein kinase A (PKA) and regulation its interaction with members of the A-kinase anchoring protein (AKAP) family (1).

C18orf42 Antibody - References

Fukuda M and Aizawa Y. Hypothetical gene C18orf42 encodes a novel protein kinase A-binding protein. Genes Cells 2015; 20:267-80.