

**HAT-tag Antibody [9A2F8]**  
**Catalog # ASC12048****Specification**

---

**HAT-tag Antibody [9A2F8] - Product Information**

|                   |  |
|-------------------|--|
| Application       | WB, E, IP  |
| Host              | Mouse  |
| Clonality         | Monoclonal   |
| Isotype           | IgG  |
| Application Notes | HAT-tag antibody can be used for detection of HAT-tag epitope-containing recombinant proteins by Western blot at 0.5 - 1 µ/ml. |

**HAT-tag Antibody [9A2F8] - Additional Information****Other Names**

Hat-tag, Hat

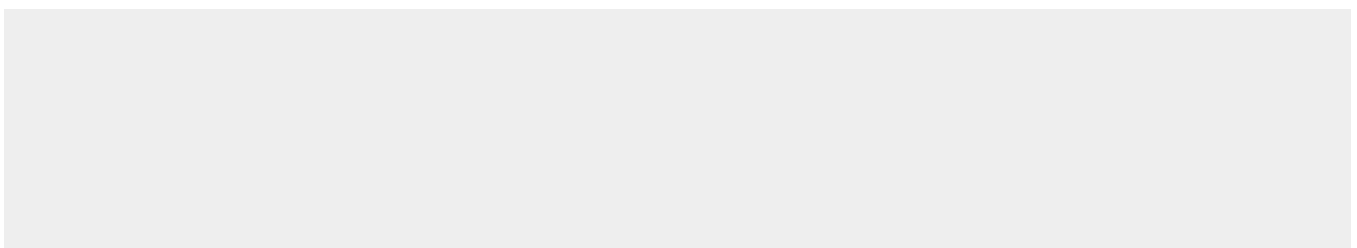
**Precautions**

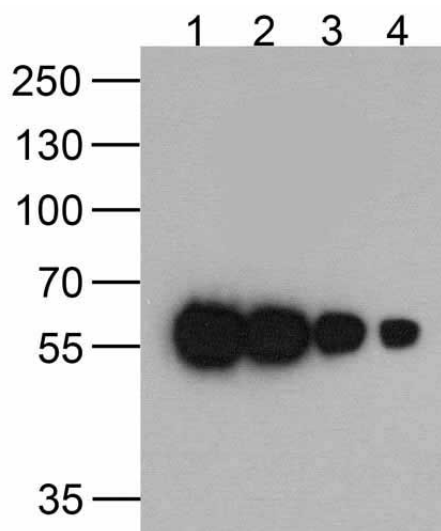
HAT-tag Antibody [9A2F8] is for research use only and not for use in diagnostic or therapeutic procedures.

**HAT-tag Antibody [9A2F8] - Protein Information****HAT-tag Antibody [9A2F8] - Protocols**

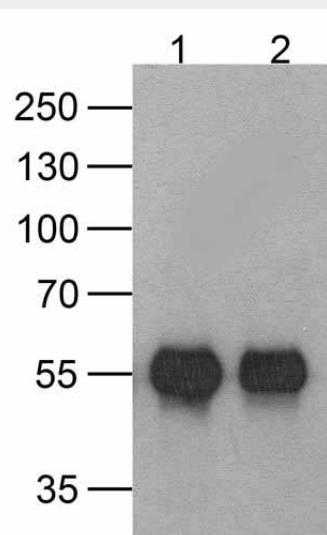
Provided below are standard protocols that you may find useful for product applications.

- [Western Blot](#)
- [Blocking Peptides](#)
- [Dot Blot](#)
- [Immunohistochemistry](#)
- [Immunofluorescence](#)
- [Immunoprecipitation](#)
- [Flow Cytometry](#)
- [Cell Culture](#)

**HAT-tag Antibody [9A2F8] - Images**



Western blot analysis of (1) 200ng, (2) 100 ng, (3) 50 ng, and (4) 25 ng of a HAT-tag-containing recombinant GGP1 protein with HAT-tag antibody at 0.5 µg/ml.



Western blot analysis of (1) 20 ng of HAT-tagged recombinant GGP1 protein and (2) 20 ng of HAT-tagged recombinant GGP1 protein using 1 µg of HAT-tag antibody to immunoprecipitate and 1 µg/ml anti-GGP1 antibody to detect.

#### **HAT-tag Antibody [9A2F8] - Background**

Epitope tags provide a method to localize gene products in a variety of cell types, study the topology of proteins and protein complexes, identify associated proteins, and characterize newly identified, low abundance or poorly immunogenic proteins when protein specific antibodies are not available. HAT-tag is one of the more popular epitope tags for expressed recombinant proteins.