

cMyc-tag Antibody [5G5H7] (biotin)
Catalog # ASC12050**Specification****cMyc-tag Antibody [5G5H7] (biotin) - Product Information**

Application	WB
Primary Accession	P60709
Other Accession	60
Host	Mouse
Clonality	Monoclonal
Isotype	IgG
Calculated MW	41737
Application Notes	Biotin-cMyc antibody can be used for detection of cMyc by Western blot at 0.5 - 1 µ/ml.

cMyc-tag Antibody [5G5H7] (biotin) - Additional Information

Gene ID	60
Other Names	
Biotin-cMyc, cMyc, Myc	

Precautions

cMyc-tag Antibody [5G5H7] (biotin) is for research use only and not for use in diagnostic or therapeutic procedures.

cMyc-tag Antibody [5G5H7] (biotin) - Protein Information

Name ACTB

Function

Actin is a highly conserved protein that polymerizes to produce filaments that form cross-linked networks in the cytoplasm of cells (PubMed: [25255767](http://www.uniprot.org/citations/25255767), PubMed: [29581253](http://www.uniprot.org/citations/29581253)). Actin exists in both monomeric (G-actin) and polymeric (F-actin) forms, both forms playing key functions, such as cell motility and contraction (PubMed: [29581253](http://www.uniprot.org/citations/29581253)). In addition to their role in the cytoplasmic cytoskeleton, G- and F- actin also localize in the nucleus, and regulate gene transcription and motility and repair of damaged DNA (PubMed: [29925947](http://www.uniprot.org/citations/29925947)). Part of the ACTR1A/ACTB filament around which the dynactin complex is built. The dynactin multiprotein complex activates the molecular motor dynein for ultra-processive transport along microtubules (By similarity).

Cellular Location

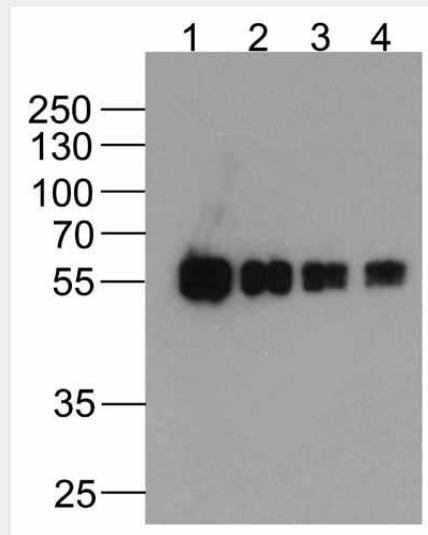
Cytoplasm, cytoskeleton. Nucleus Note=Localized in cytoplasmic mRNP granules containing untranslated mRNAs.

cMyc-tag Antibody [5G5H7] (biotin) - Protocols

Provided below are standard protocols that you may find useful for product applications.

- [Western Blot](#)
- [Blocking Peptides](#)
- [Dot Blot](#)
- [Immunohistochemistry](#)
- [Immunofluorescence](#)
- [Immunoprecipitation](#)
- [Flow Cytometry](#)
- [Cell Culture](#)

cMyc-tag Antibody [5G5H7] (biotin) - Images



Western blot analysis of (1) 200ng, (2) 100ng, (3) 50ng, and (4) 25ng of cMyc-tagged recombinant protein (GGP1) with Biotin-cMyc-tag antibody at 0.5 μ g/ml.

cMyc-tag Antibody [5G5H7] (biotin) - Background

Epitope tags provide a method to localize gene products in a variety of cell types, study the topology of proteins and protein complexes, identify associated proteins, and characterize newly identified, low abundance or poorly immunogenic proteins when protein specific antibodies are not available. cMyc-tag is one of the more popular epitope tags for expressed recombinant proteins.