

**HAT-tag Antibody**  
**Catalog # ASC12057****Specification**

---

**HAT-tag Antibody - Product Information**

Application	WB, E, IP
Host	Rabbit
Clonality	Polyclonal
Isotype	IgG
Application Notes	HAT-tag antibody can be used for detection of HAT-tag epitope-containing recombinant proteins by Western blot at 0.5 - 1 µ/ml.

**HAT-tag Antibody - Additional Information****Other Names**

Hat-tag, Hat

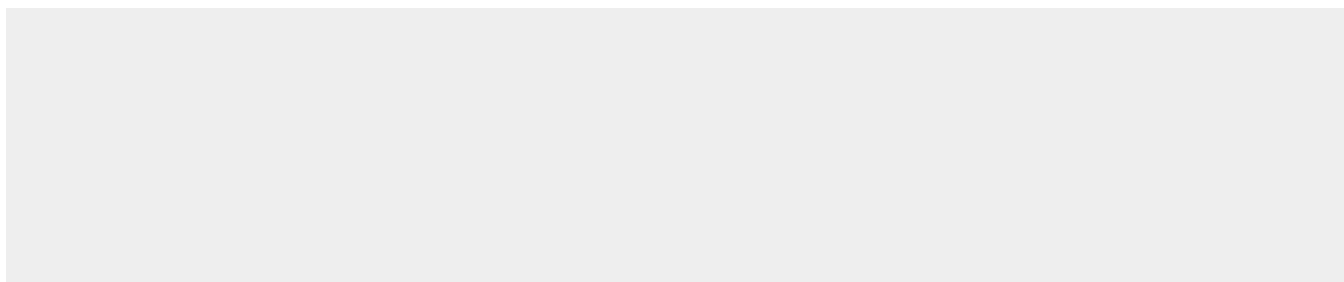
**Precautions**

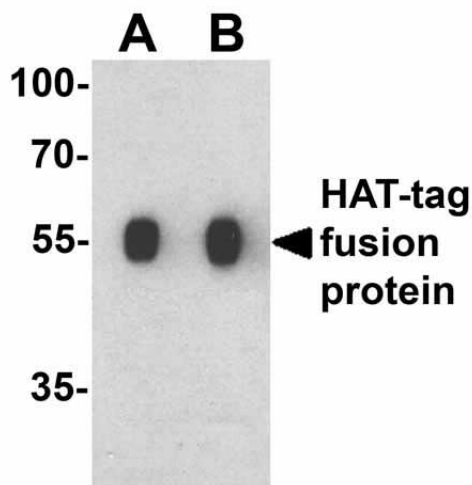
HAT-tag Antibody is for research use only and not for use in diagnostic or therapeutic procedures.

**HAT-tag Antibody - Protein Information****HAT-tag Antibody - Protocols**

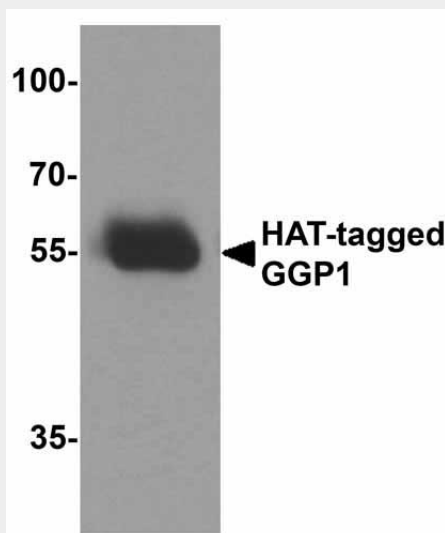
Provided below are standard protocols that you may find useful for product applications.

- [Western Blot](#)
- [Blocking Peptides](#)
- [Dot Blot](#)
- [Immunohistochemistry](#)
- [Immunofluorescence](#)
- [Immunoprecipitation](#)
- [Flow Cytometry](#)
- [Cell Culture](#)

**HAT-tag Antibody - Images**



Western blot analysis of a HAT-tag-containing recombinant protein with HAT-tag antibody at (A) 0.125 and (B) 0.25 µg/ml.



Western blot analysis of 20ng of HAT-tagged recombinant GGP1 protein using 1 µg of HAT antibody to immunoprecipitate and 1 µg/ml anti-GGP1 antibody to detect.

#### **HAT-tag Antibody - Background**

Epitope tags provide a method to localize gene products in a variety of cell types, study the topology of proteins and protein complexes, identify associated proteins, and characterize newly identified, low abundance or poorly immunogenic proteins when protein specific antibodies are not available. HAT-tag is one of the more popular epitope tags for expressed recombinant proteins.