

cMyc-tag Antibody
Catalog # ASC12059**Specification**

cMyc-tag Antibody - Product Information

Application

Host

Clonality

Isotype

Application Notes

WB, E, IP**Rabbit****Polyclonal****IgG****cMyc-tag antibody can be used for detection of cMyc-tag epitope-containing recombinant proteins by Western blot at 0.5 - 1 µ/ml.****cMyc-tag Antibody - Additional Information****Other Names**

cMyc-tag, cMyc

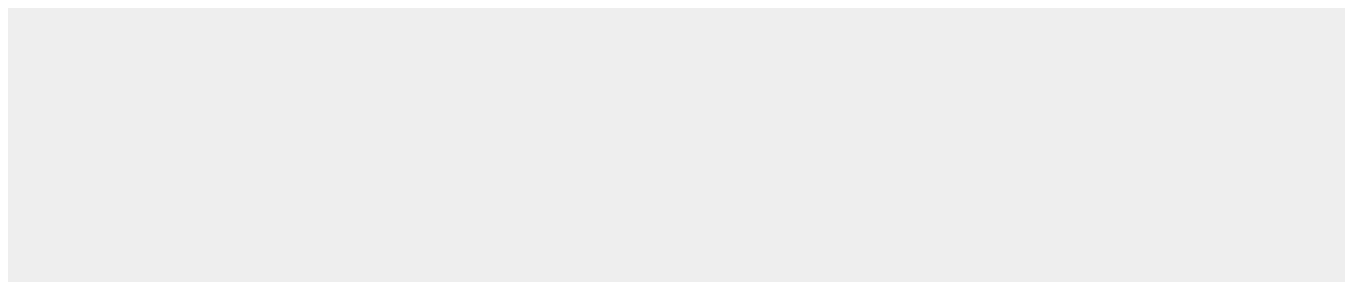
Precautions

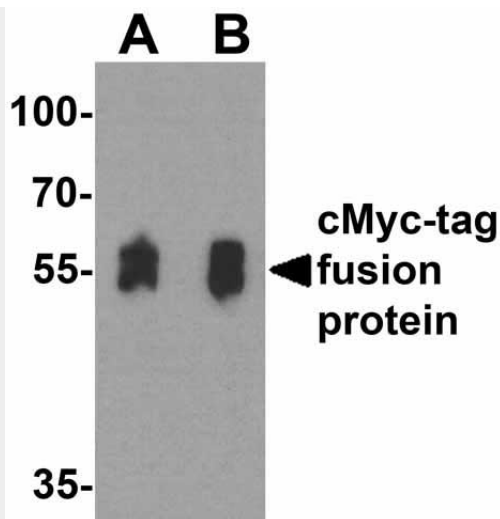
cMyc-tag Antibody is for research use only and not for use in diagnostic or therapeutic procedures.

cMyc-tag Antibody - Protein Information**cMyc-tag Antibody - Protocols**

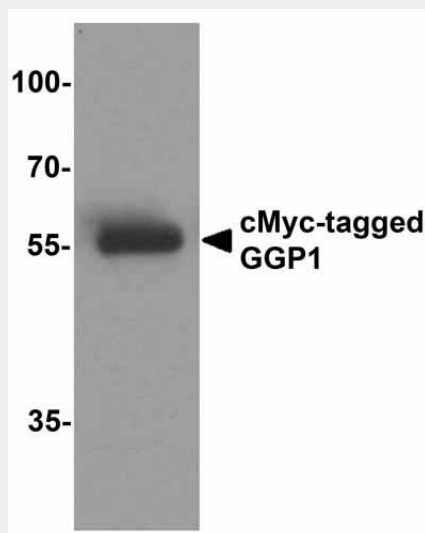
Provided below are standard protocols that you may find useful for product applications.

- [Western Blot](#)
- [Blocking Peptides](#)
- [Dot Blot](#)
- [Immunohistochemistry](#)
- [Immunofluorescence](#)
- [Immunoprecipitation](#)
- [Flow Cytometry](#)
- [Cell Culture](#)

cMyc-tag Antibody - Images



Western blot analysis of a cMyc-tag-containing recombinant protein with cMyc-tag antibody at (A) 0.125 and (B) 0.25 µg/ml.



Western blot analysis of 20ng of cMyc-tagged recombinant GGP1 protein using 1 µg of cMyc antibody to immunoprecipitate and 1 µg/ml anti-GGP1 antibody to detect.

cMyc-tag Antibody - Background

Epitope tags provide a method to localize gene products in a variety of cell types, study the topology of proteins and protein complexes, identify associated proteins, and characterize newly identified, low abundance or poorly immunogenic proteins when protein specific antibodies are not available. cMyc-tag is one of the more popular epitope tags for expressed recombinant proteins.