

SARS-CoV-2 (COVID-19) ORF10 Antibody
Infectious Disease, COVID-19
Catalog # ASC12226**Specification**

SARS-CoV-2 (COVID-19) ORF10 Antibody - Product Information

Application	E
Other Accession	OSJ03260.1
Host	Rabbit
Clonality	Polyclonal
Isotype	IgG
Application Notes	Antibody validated: SARS-CoV-2 (COVID-19) ORF10 antibody can detect 2 ng of free peptide at 1 µg/mL in ELISA. All other applications and species not yet tested.

SARS-CoV-2 (COVID-19) ORF10 Antibody - Additional Information

Gene ID	43740576
Other Names	
ORF10 protein, ORF10	

Target/Specificity

ORF10 Antibody is predicted to not cross-react with other coronavirus family members.

Reconstitution & Storage

SARS-CoV-2 (COVID-19) ORF10 antibody can be stored at 4°C for three months and -20°C, stable for up to one year. As with all antibodies care should be taken to avoid repeated freeze thaw cycles. Antibodies should not be exposed to prolonged high temperatures.

Precautions

SARS-CoV-2 (COVID-19) ORF10 Antibody is for research use only and not for use in diagnostic or therapeutic procedures.

SARS-CoV-2 (COVID-19) ORF10 Antibody - Protein Information**SARS-CoV-2 (COVID-19) ORF10 Antibody - Protocols**

Provided below are standard protocols that you may find useful for product applications.

- [Western Blot](#)
- [Blocking Peptides](#)
- [Dot Blot](#)
- [Immunohistochemistry](#)
- [Immunofluorescence](#)

- [Immunoprecipitation](#)
- [Flow Cytometry](#)
- [Cell Culture](#)

SARS-CoV-2 (COVID-19) ORF10 Antibody - Images

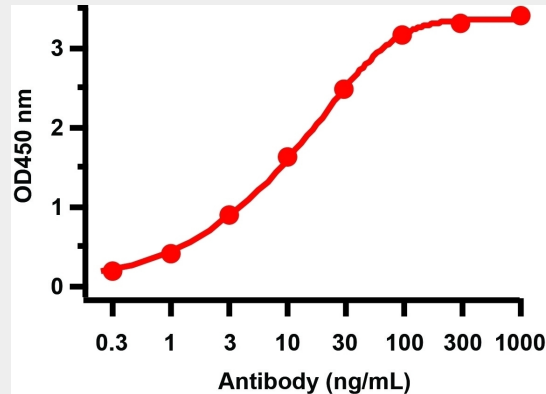


Figure 1 ELISA Validation

Antibodies: SARS-CoV-2 (COVID-19) ORF10 Antibody, 9293. A direct ELISA was performed using SARS-CoV-2 ORF10 immunogen peptide (9293P) as coating antigen and the anti-SARS-CoV-2 (COVID-19) ORF10 antibody as the capture antibody. Secondary: Goat anti-rabbit IgG HRP conjugate at 1:20000 dilution. Detection range is from 0.3 ng/mL to 1000 ng/mL

SARS-CoV-2 (COVID-19) ORF10 Antibody - Background

Coronavirus disease 2019 (COVID-19), formerly known as 2019-nCoV acute respiratory disease, is an infectious disease caused by SARS-CoV-2, a virus closely related to the SARS virus (1). The disease is the cause of the 2019–20 coronavirus outbreak (2). SARS-CoV-2 virus proteins include structural proteins, non-structural proteins and accessory factors. The structure of SARS-CoV-2 consists of the following: a spike protein (S), hemagglutinin-esterase dimer (HE), a membrane glycoprotein (M), an envelope protein (E) a nucleocapsid protein (N) and RNA. SARS-CoV-2 non-structural protein is ORF1ab that consists of 16 proteins (nsp1-nsp16), while accessory factors include ORF3a, ORF3b, ORF6, ORF7a, ORF7b, ORF8, ORF9b, ORF10 and ORF10.

SARS-CoV-2 (COVID-19) ORF10 Antibody - References

Gorbalenya. bioRxiv. 2020.;Hui et al. Int J Infect Dis. 2020;91:264-266.