

Kir2.2 Antibody
Kir2.2 Antibody, Clone S124B-38
Catalog # ASM10189**Specification**

Kir2.2 Antibody - Product Information

Application	WB, IHC, ICC, AM
Primary Accession	Q6U7SQ
Other Accession	NP_446433
Host	Mouse
Isotype	IgG1
Reactivity	Human, Mouse, Rat
Clonality	Monoclonal

Description

Mouse Anti-Rat Kir2.2 Monoclonal IgG1

Target/Specificity

Detects ~45kDa. No cross-reactivity against Kir2.2 or Kir2.3.

Other Names

IRK2 Antibody, KCNJ12 Antibody, kcnj12x Antibody, KCNJN1 Antibody, Kir2.2v Antibody, potassium inwardly rectifying channel subfamily J member 12 Antibody

Immunogen

Fusion protein amino acids 362-427 of rat Kir2.2

Purification

Protein G Purified

Storage **-20°C**

Storage Buffer

PBS pH7.4, 50% glycerol, 0.09% sodium azide

Shipping Temperature **Blue Ice or 4°C**

Certificate of Analysis

1 µg/ml of SMC-311 was sufficient for detection of Kir2.2 in 30 µg of rat brain lysate by colorimetric immunoblot analysis using Goat anti-mouse IgG:HRP as the secondary antibody.

Cellular Localization

Membrane

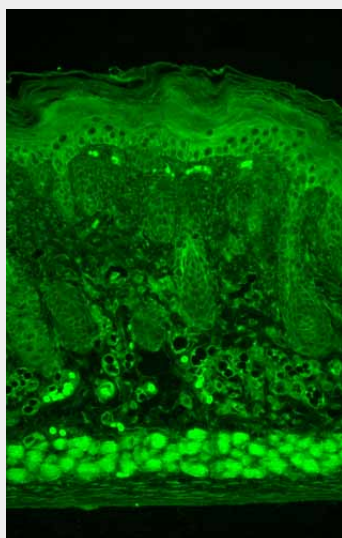
Kir2.2 Antibody - Protocols

Provided below are standard protocols that you may find useful for product applications.

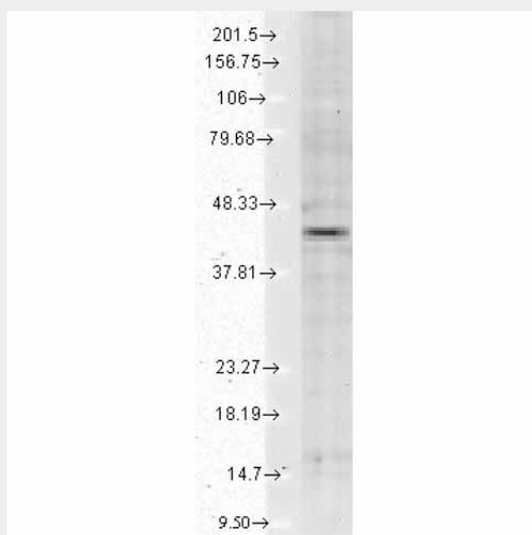
- [Western Blot](#)
- [Blocking Peptides](#)
- [Dot Blot](#)
- [Immunohistochemistry](#)

- [Immunofluorescence](#)
- [Immunoprecipitation](#)
- [Flow Cytometry](#)
- [Cell Culture](#)

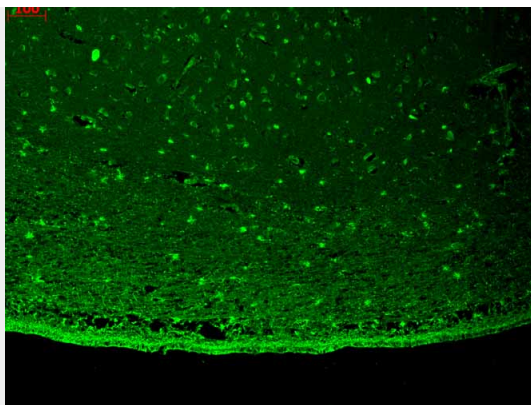
Kir2.2 Antibody - Images



Immunohistochemistry analysis using Mouse Anti-Kir2.2 Potassium Channel Monoclonal Antibody, Clone S124B-38 (ASM10189). Tissue: backskin. Species: Mouse. Fixation: Bouin's Fixative and paraffin-embedded. Primary Antibody: Mouse Anti-Kir2.2 Potassium Channel Monoclonal Antibody (ASM10189) at 1:1000 for 1 hour at RT. Secondary Antibody: FITC Goat Anti-Mouse (green) at 1:50 for 1 hour at RT.



Western Blot analysis of Human Cell lysates showing detection of Kir2.2 Potassium Channel protein using Mouse Anti-Kir2.2 Potassium Channel Monoclonal Antibody, Clone S124B-38 (ASM10189). Load: 15 µg. Block: 1.5% BSA for 30 minutes at RT. Primary Antibody: Mouse Anti-Kir2.2 Potassium Channel Monoclonal Antibody (ASM10189) at 1:1000 for 2 hours at RT. Secondary Antibody: Sheep Anti-Mouse IgG: HRP for 1 hour at RT.



Immunohistochemistry analysis using Mouse Anti-Kir2.2 Potassium Channel Monoclonal Antibody, Clone S124B-38 (ASM10189). Tissue: hippocampus. Species: Human. Fixation: Bouin's Fixative and paraffin-embedded. Primary Antibody: Mouse Anti-Kir2.2 Potassium Channel Monoclonal Antibody (ASM10189) at 1:1000 for 1 hour at RT. Secondary Antibody: FITC Goat Anti-Mouse (green) at 1:50 for 1 hour at RT.

Kir2.2 Antibody - Background

The Kir2.1 inward-rectifier potassium ion channel is encoded by the KCNJ2 gene. A defect in this gene is associated with Andersen-Tawil syndrome (1).

Kir2.2 Antibody - References

1. Donaldson M.R., Yoon G., Fu Y.H., Ptacek L.J. (2004). Ann. Med. 36 Suppl 1: 92-7.