

GABA-A Receptor Beta1 Antibody
GABA A Receptor Beta1 Antibody, Clone S96-55
Catalog # ASM10216**Specification****GABA-A Receptor Beta1 Antibody - Product Information**

Application	ICC/IF, WB, IHC
Primary Accession	P50571
Other Accession	NP_032095.1
Host	Mouse
Isotype	IgG1
Reactivity	Human, Mouse, Rat
Clonality	Monoclonal

Description

Mouse Anti-Mouse GABA-A Receptor Beta1 Monoclonal IgG1

Target/Specificity

Detects ~55kDa. No cross-reactivity against GABA-A-R-Beta 2 or -Beta3.

Other Names

AW061132 antibody, B230208N19Rik antibody, GABA(A) receptor beta 1 antibody, GABA(A) receptor subunit beta-1 antibody, GABA-A receptor beta-1 polypeptide antibody, Gabrb-1 antibody, GABRB1 antibody, Gamma aminobutyric acid (GABA) A receptor beta 1 antibody, Gamma Aminobutyric Acid A Receptor Beta 1 antibody, Gamma Aminobutyric Acid Receptor beta-1 antibody, Gamma-aminobutyric acid (GABA) A receptor subunit beta 1 antibody, Gamma-aminobutyric acid receptor subunit beta-1 antibody, GARB1 antibody, GBRB1_HUMAN antibody

Immunogen

Fusion protein amino acids 327-450 of mouse GABA-A-R-Beta1

Purification

Protein G Purified

Storage **-20°C**

Storage Buffer

PBS pH7.4, 50% glycerol, 0.09% sodium azide

Shipping Temperature

Blue Ice or 4°C

Certificate of Analysis

2 µg/ml of SMC-340 was sufficient for detection of Beta1 GABA receptor in 10 µg of rat brain lysate by colorimetric immunoblot analysis using goat anti-mouse IgG:HRP as the secondary antibody.

Cellular Localization

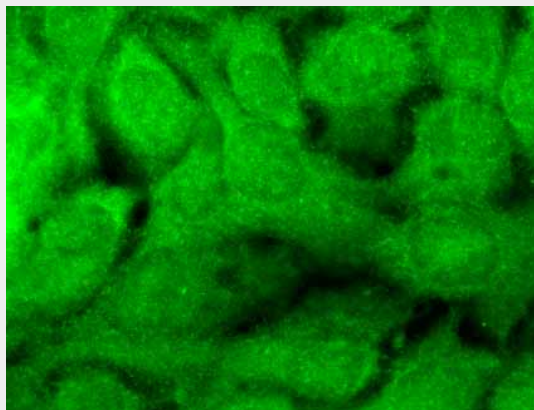
Cell Membrane | Cell Junction | Synapse | Postsynaptic Cell Membrane

GABA-A Receptor Beta1 Antibody - Protocols

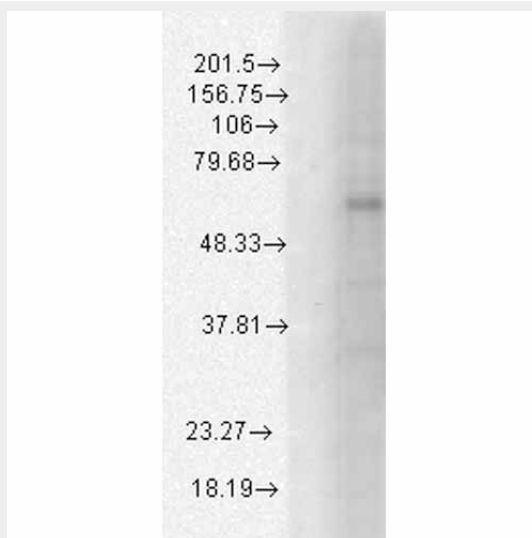
Provided below are standard protocols that you may find useful for product applications.

- [Western Blot](#)
- [Blocking Peptides](#)
- [Dot Blot](#)
- [Immunohistochemistry](#)
- [Immunofluorescence](#)
- [Immunoprecipitation](#)
- [Flow Cytometry](#)
- [Cell Culture](#)

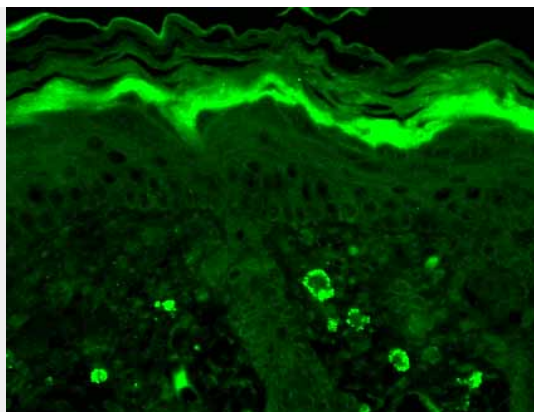
GABA-A Receptor Beta1 Antibody - Images



Immunocytochemistry/Immunofluorescence analysis using Mouse Anti-GABA A Receptor Monoclonal Antibody, Clone S96-55 (ASM10216). Tissue: HaCaT cells. Species: Human. Fixation: Cold 100% methanol for 10 minutes at -20°C. Primary Antibody: Mouse Anti-GABA A Receptor Monoclonal Antibody (ASM10216) at 1:100 for 1 hour at RT. Secondary Antibody: FITC Goat Anti-Mouse (green) at 1:50 for 1 hour at RT. Localization: Positive.



Western Blot analysis of Human Cell line lysates showing detection of GABA A Receptor protein using Mouse Anti-GABA A Receptor Monoclonal Antibody, Clone S96-55 (ASM10216). Load: 15 µg. Block: 1.5% BSA for 30 minutes at RT. Primary Antibody: Mouse Anti-GABA A Receptor Monoclonal Antibody (ASM10216) at 1:1000 for 2 hours at RT. Secondary Antibody: Sheep Anti-Mouse IgG: HRP for 1 hour at RT.



Immunohistochemistry analysis using Mouse Anti-GABA A Receptor Monoclonal Antibody, Clone S96-55 (ASM10216). Tissue: backskin. Species: Mouse. Fixation: Bouin's Fixative and paraffin-embedded. Primary Antibody: Mouse Anti-GABA A Receptor Monoclonal Antibody (ASM10216) at 1:100 for 1 hour at RT. Secondary Antibody: FITC Goat Anti-Mouse (green) at 1:50 for 1 hour at RT. Localization: Dermal staining.

GABA-A Receptor Beta1 Antibody - Background

The GABA-A receptor is a member of the superfamily of fast acting ligand-gated ion channels. The individual subunits of these receptors have similar sequences and structural features (1). GABA-A receptors are the major fast inhibitory neurotransmitter gated ion channels in the brain (2).

GABA-A Receptor Beta1 Antibody - References

1. Bracamontes J.R. and Steinbach J.H. (2008) J Bio Chem. 283: 26128-26136.
2. Macdonald R.L., Olsen R.W. (1993) Annu Rev Neurosci. 17: 569-602.