

**GABA-A Receptor Beta1 Antibody**  
**GABA A Receptor Beta1 Antibody, Clone S96-55**  
**Catalog # ASM10216****Specification****GABA-A Receptor Beta1 Antibody - Product Information**

Application	WB, IHC, AM
Primary Accession	<a href="#">P50571</a>
Other Accession	<a href="#">NP_032095.1</a>
Host	Mouse
Isotype	IgG1
Reactivity	Human, Mouse, Rat
Clonality	Monoclonal

**Description**

Mouse Anti-Mouse GABA-A Receptor Beta1 Monoclonal IgG1

**Target/Specificity**

Detects ~55kDa. No cross-reactivity against GABA-A-R-Beta 2 or -Beta3.

**Other Names**

AW061132 antibody, B230208N19Rik antibody, GABA(A) receptor beta 1 antibody, GABA(A) receptor subunit beta-1 antibody, GABA-A receptor beta-1 polypeptide antibody, Gabrb-1 antibody, GABRB1 antibody, Gamma aminobutyric acid (GABA) A receptor beta 1 antibody, Gamma Aminobutyric Acid A Receptor Beta 1 antibody, Gamma Aminobutyric Acid Receptor beta-1 antibody, Gamma-aminobutyric acid (GABA) A receptor subunit beta 1 antibody, Gamma-aminobutyric acid receptor subunit beta-1 antibody, GARB1 antibody, GBRB1\_HUMAN antibody

**Immunogen**

Fusion protein amino acids 327-450 of mouse GABA-A-R-Beta1

**Purification**

Protein G Purified

Storage **-20°C**

**Storage Buffer**

PBS pH7.4, 50% glycerol, 0.09% sodium azide

Shipping Temperature

**Blue Ice or 4°C**

**Certificate of Analysis**

2 µg/ml of SMC-340 was sufficient for detection of Beta1 GABA receptor in 10 µg of rat brain lysate by colorimetric immunoblot analysis using goat anti-mouse IgG:HRP as the secondary antibody.

**Cellular Localization**

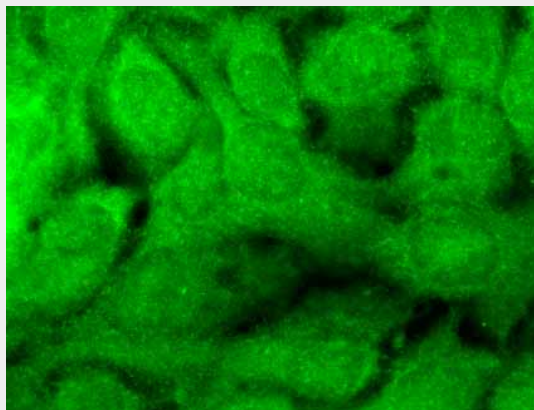
Cell Membrane | Cell Junction | Synapse | Postsynaptic Cell Membrane

**GABA-A Receptor Beta1 Antibody - Protocols**

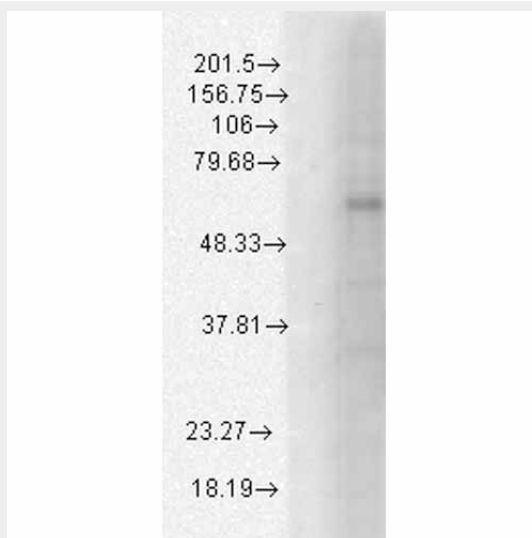
Provided below are standard protocols that you may find useful for product applications.

- [Western Blot](#)
- [Blocking Peptides](#)
- [Dot Blot](#)
- [Immunohistochemistry](#)
- [Immunofluorescence](#)
- [Immunoprecipitation](#)
- [Flow Cytometry](#)
- [Cell Culture](#)

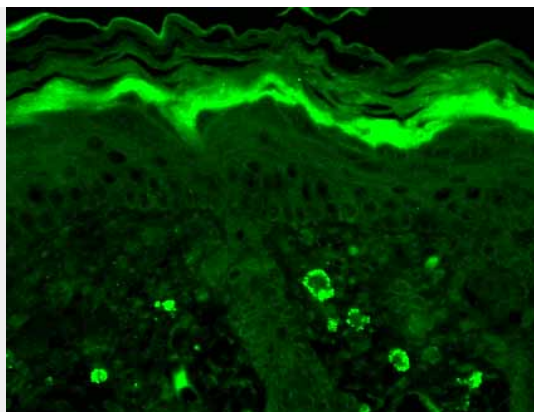
#### **GABA-A Receptor Beta1 Antibody - Images**



Immunocytochemistry/Immunofluorescence analysis using Mouse Anti-GABA A Receptor Monoclonal Antibody, Clone S96-55 (ASM10216). Tissue: HaCaT cells. Species: Human. Fixation: Cold 100% methanol for 10 minutes at -20°C. Primary Antibody: Mouse Anti-GABA A Receptor Monoclonal Antibody (ASM10216) at 1:100 for 1 hour at RT. Secondary Antibody: FITC Goat Anti-Mouse (green) at 1:50 for 1 hour at RT. Localization: Positive.



Western Blot analysis of Human Cell line lysates showing detection of GABA A Receptor protein using Mouse Anti-GABA A Receptor Monoclonal Antibody, Clone S96-55 (ASM10216). Load: 15 µg. Block: 1.5% BSA for 30 minutes at RT. Primary Antibody: Mouse Anti-GABA A Receptor Monoclonal Antibody (ASM10216) at 1:1000 for 2 hours at RT. Secondary Antibody: Sheep Anti-Mouse IgG: HRP for 1 hour at RT.



Immunohistochemistry analysis using Mouse Anti-GABA A Receptor Monoclonal Antibody, Clone S96-55 (ASM10216). Tissue: backskin. Species: Mouse. Fixation: Bouin's Fixative and paraffin-embedded. Primary Antibody: Mouse Anti-GABA A Receptor Monoclonal Antibody (ASM10216) at 1:100 for 1 hour at RT. Secondary Antibody: FITC Goat Anti-Mouse (green) at 1:50 for 1 hour at RT. Localization: Dermal staining.

### **GABA-A Receptor Beta1 Antibody - Background**

The GABA-A receptor is a member of the superfamily of fast acting ligand-gated ion channels. The individual subunits of these receptors have similar sequences and structural features (1). GABA-A receptors are the major fast inhibitory neurotransmitter gated ion channels in the brain (2).

### **GABA-A Receptor Beta1 Antibody - References**

1. Bracamontes J.R. and Steinbach J.H. (2008) J Bio Chem. 283: 26128-26136.
2. Macdonald R.L., Olsen R.W. (1993) Annu Rev Neurosci. 17: 569-602.