

Neurologin 1 Antibody
Neurologin 1 Antibody, Clone S97A-31
Catalog # ASM10295**Specification**

Neurologin 1 Antibody - Product Information

Application	ICC/IF, WB
Primary Accession	Q62765
Other Accession	NP_446320.1
Host	Mouse
Isotype	IgG1
Reactivity	Human, Mouse, Rat
Clonality	Monoclonal

Description

Mouse Anti-Rat Neurologin 1 Monoclonal IgG1

Target/Specificity

Detects ~120kDa. Does not cross-react with other Neurologins.

Other Names

NLG 1 Antibody, KIAA1070 Antibody, MGC45115 Antibody, Neurologin-1 Antibody, NL1 Antibody, NLG1 Antibody, Nlgn1 Antibody

Immunogen

Fusion protein amino acids 718-843 (cytoplasmic C-terminus) of rat Neurologin-1. Mouse: 99% identity (125/126 amino acids identical). Human: 99% identity (125/126 amino acids identical) >40% identity with Neurologin-2 and -3.

Purification

Protein G Purified

Storage **-20°C**

Storage Buffer

PBS pH 7.4, 50% glycerol, 0.1% sodium azide

Shipping Temperature

Blue Ice or 4°C

Certificate of Analysis

2 µg/ml of SMC-463 was sufficient for detection of Neurologin-1 in 20 µg of rat brain lysate by colorimetric immunoblot analysis using Goat anti-mouse IgG:HRP as the secondary antibody.

Cellular Localization

Cell Membrane | Cell Junction | Synapse | Postsynaptic Cell Membrane | Postsynaptic Density

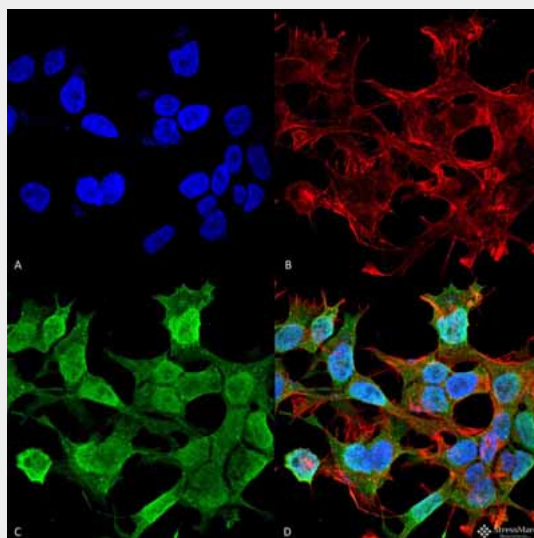
Neurologin 1 Antibody - Protocols

Provided below are standard protocols that you may find useful for product applications.

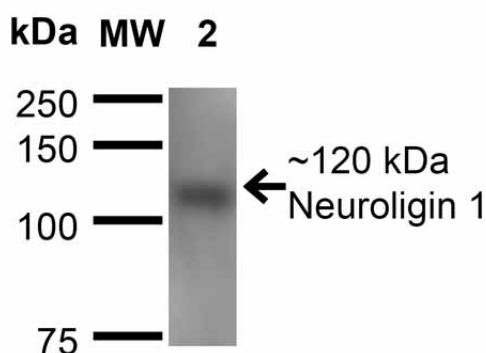
- [Western Blot](#)
- [Blocking Peptides](#)

- [Dot Blot](#)
- [Immunohistochemistry](#)
- [Immunofluorescence](#)
- [Immunoprecipitation](#)
- [Flow Cytometry](#)
- [Cell Culture](#)

Neurologin 1 Antibody - Images



Immunocytochemistry/Immunofluorescence analysis using Mouse Anti-Neurologin 1 Monoclonal Antibody, Clone S97A-31 (ASM10295). Tissue: Neuroblastoma cell line (SK-N-BE). Species: Human. Fixation: 4% Formaldehyde for 15 min at RT. Primary Antibody: Mouse Anti-Neurologin 1 Monoclonal Antibody (ASM10295) at 1:100 for 60 min at RT. Secondary Antibody: Goat Anti-Mouse ATTO 488 at 1:100 for 60 min at RT. Counterstain: Phalloidin Texas Red F-Actin stain; DAPI (blue) nuclear stain at 1:1000, 1:5000 for 60min RT, 5min RT. Localization: Cell Membrane, Nucleus. Magnification: 60X. (A) DAPI (blue) nuclear stain (B) Phalloidin Texas Red F-Actin stain (C) Neurologin 1 Antibody (D) Composite.



Western Blot analysis of Mouse Brain Membrane showing detection of ~120 kDa Neurologin 1 protein using Mouse Anti-Neurologin 1 Monoclonal Antibody, Clone S97A-31 (ASM10295). Lane 1: Molecular Weight Ladder. Lane 2: Mouse Brain Membrane. Load: 15 µg. Block: 2% BSA and 2%

Skim Milk in 1X TBST. Primary Antibody: Mouse Anti-Neuroigin 1 Monoclonal Antibody (ASM10295) at 1:200 for 16 hours at 4°C. Secondary Antibody: Goat Anti-Mouse IgG: HRP at 1:1000 for 1 hour RT. Color Development: ECL solution for 6 min in RT. Predicted/Observed Size: ~120 kDa.

Neuroigin 1 Antibody - Background

Neuroigin-1 is a neuronal cell surface protein belonging to the type-B carboxylesterase/lipase family. It is a necessary component in the maturation of excitatory synapses for their normal, functional development, and is necessary to the regulation of synaptic plasticity and the development of long-term memory within the adult amygdala in mammals. It is believed to participate in cell-cell-interaction through the assembly of intracellular junction by the binding of beta-neurexins, and may also be a factor in the maintenance and assembly of synaptic junctions. It is also thought to have involvement in excitatory synaptic specification. Within brain tissue, Neuroigin-1 is primarily observed in neurons and spinal cord.