

QKI (pan) Antibody
QKI Antibody, Clone S147-6
Catalog # ASM10299**Specification**

QKI (pan) Antibody - Product Information

Application	ICC/IF, WB
Primary Accession	Q96PU8
Other Accession	NP_006766.1
Host	Mouse
Isotype	IgG2b
Reactivity	Human, Mouse, Rat
Clonality	Monoclonal

Description

Mouse Anti-Human QKI (pan) Monoclonal IgG2b

Target/Specificity

Detects ~36-38kDa.

Other Names

Protein quaking Antibody, Hqk Antibody, Hqkl Antibody, QKI Antibody, KH Domain Containing Antibody, RNA Binding (QKI) Antibody

Immunogen

Fusion protein amino acids 1-341 (full-length) of human QKI-5. Mouse: 100% identity (341/341 amino acids identical). Rat: 99% identity (339/341 amino acids identical) >90% identity with QKI-6, QKI-7 and QKI-7b.

Purification

Protein G Purified

Storage **-20°C**

Storage Buffer

PBS pH 7.4, 50% glycerol, 0.1% sodium azide

Shipping Temperature

Blue Ice or 4°C

Certificate of Analysis

1 µg/ml of SMC-467 was sufficient for detection of Pan-QKI in 20 µg of rat brain lysate by colorimetric immunoblot analysis using Goat anti-mouse IgG:HRP as the secondary antibody.

Cellular Localization

Cytoplasm | Nucleus

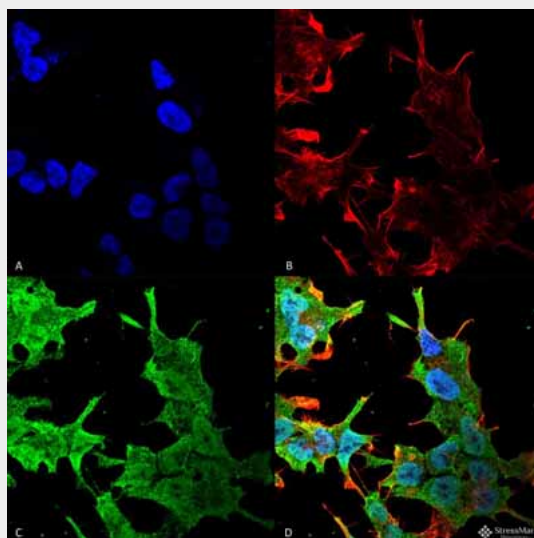
QKI (pan) Antibody - Protocols

Provided below are standard protocols that you may find useful for product applications.

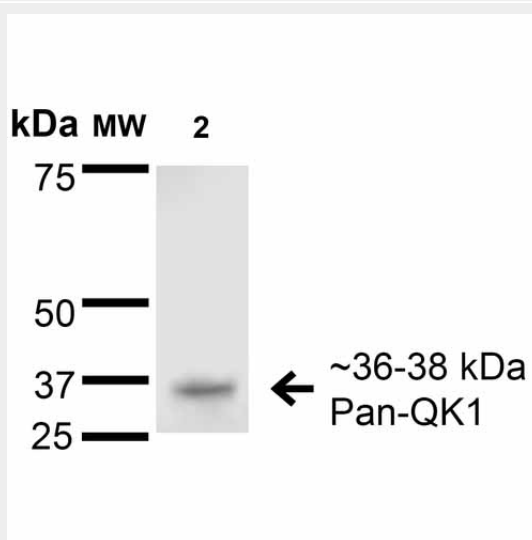
- [Western Blot](#)
- [Blocking Peptides](#)

- [Dot Blot](#)
- [Immunohistochemistry](#)
- [Immunofluorescence](#)
- [Immunoprecipitation](#)
- [Flow Cytometry](#)
- [Cell Culture](#)

QKI (pan) Antibody - Images



Immunocytochemistry/Immunofluorescence analysis using Mouse Anti-QKI (pan) Monoclonal Antibody, Clone S147-6 (ASM10299). Tissue: Neuroblastoma cell line (SK-N-BE). Species: Human. Fixation: 4% Formaldehyde for 15 min at RT. Primary Antibody: Mouse Anti-QKI (pan) Monoclonal Antibody (ASM10299) at 1:100 for 60 min at RT. Secondary Antibody: Goat Anti-Mouse ATTO 488 at 1:100 for 60 min at RT. Counterstain: Phalloidin Texas Red F-Actin stain; DAPI (blue) nuclear stain at 1:1000; 1:5000 for 60 min RT, 5 min RT. Localization: Cytoplasm, Nucleus. Magnification: 60X. (A) DAPI (blue) nuclear stain (B) Phalloidin Texas Red F-Actin stain (C) QKI (pan) Antibody (D) Composite.



Western Blot analysis of Rat Brain Membrane showing detection of 36-38 kDa QKI (pan) protein using Mouse Anti-QKI (pan) Monoclonal Antibody, Clone S147-6 (ASM10299). Lane 1: Molecular Weight Ladder. Lane 2: Rat Brain Membrane. Load: 15 μ g. Block: 2% BSA and 2% Skim Milk in 1X

TBST. Primary Antibody: Mouse Anti-QKI (pan) Monoclonal Antibody (ASM10299) at 1:200 for 16 hours at 4°C. Secondary Antibody: Goat Anti-Mouse IgG: HRP at 1:1000 for 1 hour RT. Color Development: ECL solution for 6 min in RT. Predicted/Observed Size: 36-38 kDa.

QKI (pan) Antibody - Background

QKI is also called Protein Quaking or Hqkl. QKI is an RNA-binding protein that plays a central role in myelination. QKI acts by regulating pre-mRNA splicing, mRNA export, mRNA stability and protein translation, and is itself, regulated by alternative splicing. QKI is expressed in the frontal cortex of brain, but is shown to be down-regulated in the brain of schizophrenic patients.