

**GABA-A Receptor Alpha 2 Antibody**  
**GABA-A Receptor Alpha 2 Antibody, Clone S399-19**  
**Catalog # ASM10318****Specification**

---

**GABA-A Receptor Alpha 2 Antibody - Product Information**

Application	WB, IHC, ICC
Primary Accession	<a href="#">P23576</a>
Other Accession	<a href="#">NP_001129251.1</a>
Host	Mouse
Isotype	IgG1
Reactivity	Human, Mouse, Rat
Clonality	Monoclonal

**Description**

Mouse Anti-Rat GABA-A Receptor Alpha2 Monoclonal IgG1

**Target/Specificity**

Detects ~55kDa. Does not cross-react with GABA-A Receptor Alpha1.

**Other Names**

GABA A receptor subunit alpha 2 Antibody, GABRA2 Antibody, Gamma aminobutyric acid A receptor Alpha 2 Antibody, GBRA2\_Human Antibody

**Immunogen**

Fusion protein amino acids 350-385 (Cytoplasmic C-terminus) of rat GABA-A Receptor Alpha2

**Purification**

Protein G Purified

Storage **-20°C**

**Storage Buffer**

PBS pH7.4, 50% glycerol, 0.1% sodium azide

Shipping Temperature **Blue Ice or 4°C**

**Certificate of Analysis**

A 1:100 dilution of SMC-486 was sufficient for detection of GABA-A R, Alpha2 in 20 µg of mouse brain lysate by ECL immunoblot analysis using Goat anti-mouse IgG:HRP as the secondary antibody.

**Cellular Localization**

Cytoplasm

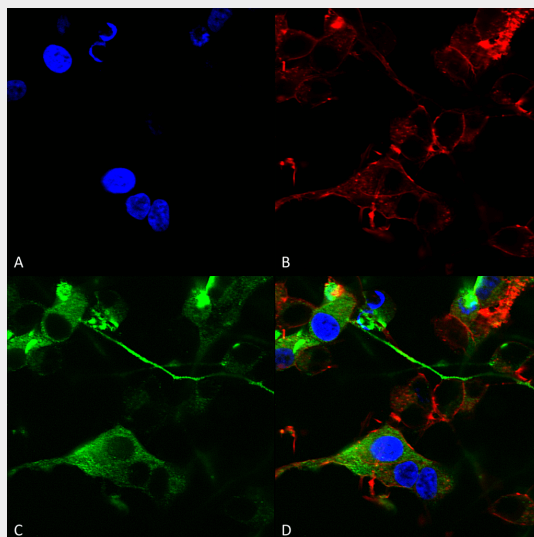
**GABA-A Receptor Alpha 2 Antibody - Protocols**

Provided below are standard protocols that you may find useful for product applications.

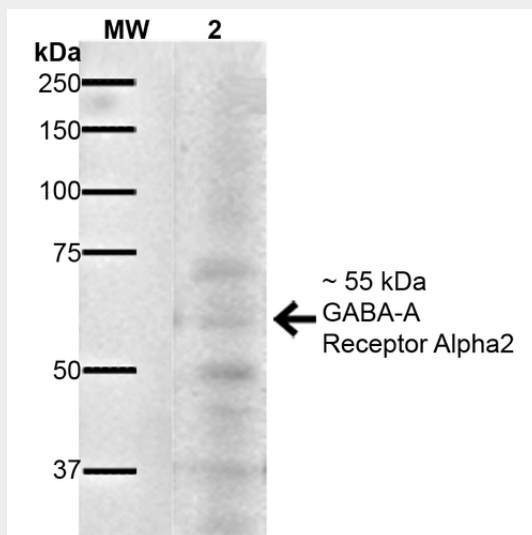
- [Western Blot](#)
- [Blocking Peptides](#)
- [Dot Blot](#)

- [Immunohistochemistry](#)
- [Immunofluorescence](#)
- [Immunoprecipitation](#)
- [Flow Cytometry](#)
- [Cell Culture](#)

## GABA-A Receptor Alpha 2 Antibody - Images

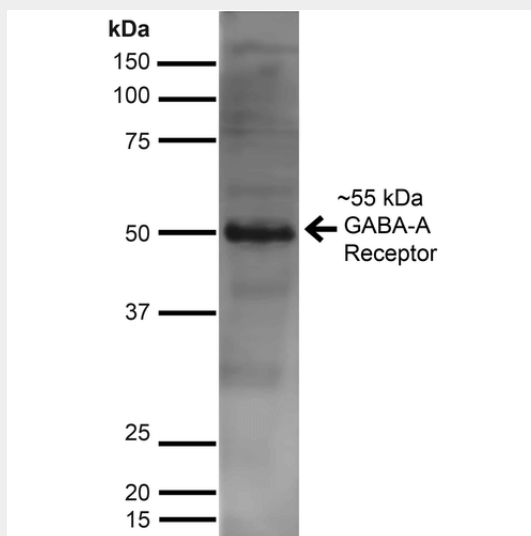


Immunocytochemistry/Immunofluorescence analysis using Mouse Anti-GABA-A Receptor Alpha 2 Monoclonal Antibody, Clone N399/19 (ASM10318). Tissue: Neuroblastoma cells (SH-SY5Y). Species: Human. Fixation: 4% PFA for 15 min. Primary Antibody: Mouse Anti-GABA-A Receptor Alpha 2 Monoclonal Antibody (ASM10318) at 1:200 for overnight at 4°C with slow rocking. Secondary Antibody: AlexaFluor 488 at 1:1000 for 1 hour at RT. Counterstain: Phalloidin-iFluor 647 (red) F-Actin stain; Hoechst (blue) nuclear stain at 1:800, 1.6mM for 20 min at RT. (A) Hoechst (blue) nuclear stain. (B) Phalloidin-iFluor 647 (red) F-Actin stain. (C) GABA-A Receptor Alpha 2 Antibody (D) Composite.



Western Blot analysis of Mouse Brain showing detection of ~55 kDa GABA A Receptor Alpha 2 protein using Mouse Anti-GABA A Receptor Alpha 2 Monoclonal Antibody, Clone N399/19 (ASM10318). Lane 1: MW Ladder. Lane 2: Mouse Brain. Load: 20 µg. Primary Antibody: Mouse Anti-GABA A Receptor Alpha 2 Monoclonal Antibody (ASM10318) at 1:1000 for 16 hours at 4°C.

Secondary Antibody: Goat Anti-Mouse IgG: HRP at 1:200 for 1 hour at RT. Predicted/Observed Size: ~55 kDa. Other Band(s): ~ 37 kDa, ~50 kDa, ~70 kDa.



Western Blot analysis of Rat Brain showing detection of ~55 kDa GABA A Receptor Alpha 2 protein using Mouse Anti-GABA A Receptor Alpha 2 Monoclonal Antibody, Clone N399/19 (ASM10318). Lane 1: MW Ladder. Lane 2: Rat Brain. Load: 10  $\mu$ g. Block: 5% Skim Milk for 1 hour at RT. Primary Antibody: Mouse Anti-GABA A Receptor Alpha 2 Monoclonal Antibody (ASM10318) at 1:1000 for 1 hour at RT. Secondary Antibody: Goat Anti-Mouse IgG: HRP at 1:100 for 1 hour at RT. Color Development: ECL solution for 6 min at RT. Predicted/Observed Size: ~55 kDa.

#### **GABA-A Receptor Alpha 2 Antibody - Background**

The GABA-A receptor is a member of the superfamily of fast acting ligand-gated ion channels. The individual subunits of these receptors have similar sequences and structural features (1). GABA-A receptors are the major fast inhibitory neurotransmitter gated ion channels in the brain (2).

#### **GABA-A Receptor Alpha 2 Antibody - References**

1. Bracamontes J.R. and Steinbach J.H. (2008) J Bio Chem. 283: 26128-26136.
2. Macdonald R.L., Olsen R.W. (1993) Annu Rev Neurosci. 17: 569-602.