

Phosphotyrosine Antibody: HRP
Catalog # ASM10414**Specification****Phosphotyrosine Antibody: HRP - Product Information**

Application	WB, IHC, IP, ICC
Host	Rabbit
Reactivity	Species Independent
Clonality	Polyclonal
Description	
Rabbit Anti-Phosphotyrosine Polyclonal	

Target/Specificity

Detects proteins phosphorylated on tyrosine residues. Does not cross-react with phosphoserine or threonine.

Other Names

Phospho-tyrosine Antibody

Immunogen

Phosphotyrosine conjugated to KLH

Purification

Protein A Purified

Storage -20°C

Storage Buffer

PBS, 50% glycerol, 0.09% sodium azide

Shipping Temperature

Blue Ice or 4°C

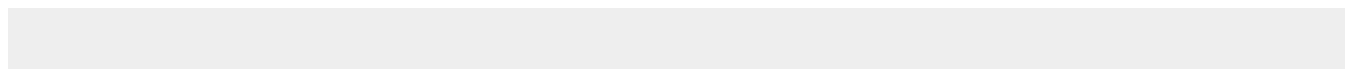
Certificate of Analysis

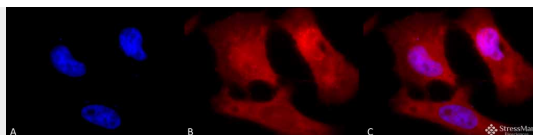
A 1:250 dilution of SPC-161 was sufficient for detection of tyrosine-phosphorylated species in mouse spleen lysates in western blot analysis.

Phosphotyrosine Antibody: HRP - Protocols

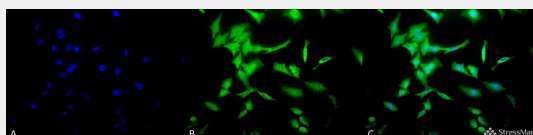
Provided below are standard protocols that you may find useful for product applications.

- [Western Blot](#)
- [Blocking Peptides](#)
- [Dot Blot](#)
- [Immunohistochemistry](#)
- [Immunofluorescence](#)
- [Immunoprecipitation](#)
- [Flow Cytometry](#)
- [Cell Culture](#)

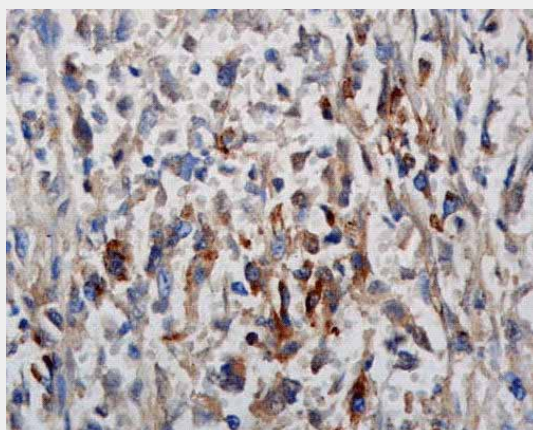
Phosphotyrosine Antibody: HRP - Images



Immunocytochemistry/Immunofluorescence analysis using Rabbit Anti-Phosphotyrosine Polyclonal Antibody (ASM10414). Tissue: HeLa Cells. Species: Human. Fixation: 2% Formaldehyde for 20 min at RT. Primary Antibody: Rabbit Anti-Phosphotyrosine Polyclonal Antibody (ASM10414) at 1:50 for 12 hours at 4°C. Secondary Antibody: APC Goat Anti-Rabbit (red) at 1:200 for 2 hours at RT. Counterstain: DAPI (blue) nuclear stain at 1:40000 for 2 hours at RT. Localization: Nucleus. Cytoplasm. Magnification: 100x. (A) DAPI (blue) nuclear stain. (B) Anti-Phosphotyrosine Antibody. (C) Composite.



Immunocytochemistry/Immunofluorescence analysis using Rabbit Anti-Phosphotyrosine Polyclonal Antibody (ASM10414). Tissue: HeLa Cells. Species: Human. Fixation: 2% Formaldehyde for 20 min at RT. Primary Antibody: Rabbit Anti-Phosphotyrosine Polyclonal Antibody (ASM10414) at 1:50 for 12 hours at 4°C. Secondary Antibody: FITC Goat Anti-Rabbit (green) at 1:200 for 2 hours at RT. Counterstain: DAPI (blue) nuclear stain at 1:40000 for 2 hours at RT. Localization: Nucleus. Cytoplasm. Magnification: 20x. (A) DAPI (blue) nuclear stain. (B) Anti-Phosphotyrosine Antibody. (C) Composite.



Immunohistochemistry analysis using Rabbit Anti-Phosphotyrosine Polyclonal Antibody (ASM10414). Tissue: breast cancer. Species: Human. Primary Antibody: Rabbit Anti-Phosphotyrosine Polyclonal Antibody (ASM10414) at 1:100.

Phosphotyrosine Antibody: HRP - Background

Protein phosphorylation is an important posttranslational modification that serves many key functions to regulate a protein's activity, localization, and protein-protein interactions. Phosphorylation is catalyzed by various specific protein kinases, which involves removing a phosphate group from ATP and covalently attaching it to a recipient protein that acts as a substrate. Most kinases act on both serine and threonine; others act on tyrosine, and a number (dual specificity kinases) act on all three. Because phosphorylation can occur at multiple sites on any given protein, it can therefore change the function or localization of that protein at any time (1). Changing the function of these proteins has been linked to a number of diseases, including cancer, diabetes, heart disease, inflammation and neurological disorders (2-4). In particular, the phosphorylation of tyrosine is considered one of the key steps in signal transduction and regulation of enzymatic activity (5). Phosphotyrosine can be detected through

specific antibodies, and are helpful in facilitating the identification of tyrosine kinase substrates (6).

Phosphotyrosine Antibody: HRP - References

1. Goto H. et al. (2005) Nature Cell Biology 8: 180-187.
2. Blume-Jensen P. and Hunter T. (2001) Nature 411: 355-365.
3. Downward J. (2001) Nature 411: 759-762.
4. Pawson T. and Saxton T.M. (1999) Cell 97: 675-678.
5. Frackelton A.R. Jr., Ross A.H., and Eisen H.N. (1983) Mol Cell Biol. 3: 1343-1352.
6. Ross A.H., Baltimore D., and Eisen H.N. (1981) Nature 294: 654-656.
7. Ostrovsky PC. (1995) Genes Dev. 9(16): 2034-2041.