

WDR45 Antibody
Catalog # ASM10526**Specification**

WDR45 Antibody - Product Information

Application	WB, ICC
Primary Accession	Q9Y484
Other Accession	NP_001025067.1
Host	Rabbit
Reactivity	Human, Rat
Clonality	Polyclonal
Description	
Rabbit Anti-Human WDR45 Polyclonal	

Target/Specificity

Detects ~40 kDa.

Other Names

WIPI4 Antibody, WDR45 Antibody, WDRX1 Antibody, WD repeat domain phosphoinositide-interacting protein 4 Antibody, WIPI-4 Antibody, WDRX14 Antibody, WD repeat-containing protein 45 Antibody, ORF Names: Antibody, JM5 Antibody,

Immunogen

Synthetic peptide from the C-terminal of Human WIPI4 (aa. 312-322)

Purification

Peptide Affinity Purified

Storage **-20°C****Storage Buffer**

PBS, 50% glycerol, 0.09% sodium azide

Shipping Temperature **Blue Ice or 4°C****Certificate of Analysis**

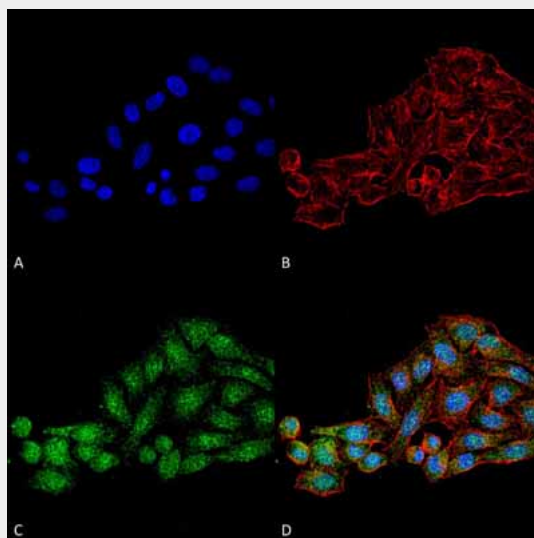
A 1:1000 dilution of SPC-651 was sufficient for detection of WIPI4 in 15 µg of Human HeLa Cell Lysates by ECL immunoblot analysis using goat anti-rabbit IgG:HRP as the secondary antibody.

WDR45 Antibody - Protocols

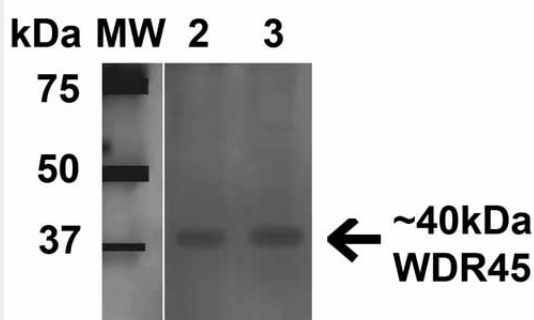
Provided below are standard protocols that you may find useful for product applications.

- [Western Blot](#)
- [Blocking Peptides](#)
- [Dot Blot](#)
- [Immunohistochemistry](#)
- [Immunofluorescence](#)
- [Immunoprecipitation](#)
- [Flow Cytometry](#)
- [Cell Culture](#)

WDR45 Antibody - Images



Immunocytochemistry/Immunofluorescence analysis using Rabbit Anti-WDR45 Polyclonal Antibody (ASM10526). Tissue: HeLa Cells (Human Cervical Cancer). Species: Human. Fixation: 4% Formaldehyde for 15 min at RT. Primary Antibody: Rabbit Anti-WDR45 Polyclonal Antibody (ASM10526) at 1:100 for 60 min at RT. Secondary Antibody: Goat Anti-Rabbit ATTO 488 at 1:200 for 60 min at RT. Counterstain: Phalloidin Texas Red F-Actin stain; DAPI (blue) nuclear stain at 1:1000, 1:5000 for 60 min at RT, 5 min at RT. Localization: Cytoplasm. Magnification: 60X. (A) DAPI (blue) nuclear stain (B) Phalloidin Texas Red F-Actin stain (C) WDR45 Antibody (D) Composite.



Western blot analysis of Human 293Trap cell lysates showing detection of 40 kDa WDR45 protein using Rabbit Anti-WDR45 Polyclonal Antibody (ASM10526). Lane 1: Molecular Weight Ladder (MW). Lane 2: Human 293Trap cell lysates. Load: 15 µg. Block: 5% Skim Milk in 1X TBST. Primary Antibody: Rabbit Anti-WDR45 Polyclonal Antibody (ASM10526) at 1:1000 for 1 hour at RT. Secondary Antibody: Goat Anti-Rabbit HRP at 1:2000 for 60 min at RT. Color Development: ECL solution for 6 min in RT. Predicted/Observed Size: 40 kDa.

WDR45 Antibody - Background

WIPI-4 is a 360 amino acid protein containing three WD repeats. Existing as three alternatively

spliced isoforms, WIPI-4 is ubiquitously expressed but found at highest levels in heart and skeletal muscle. WD repeat proteins are involved in a variety of cellular processes, including cell cycle progression, signal transduction, apoptosis, and gene regulation. Diseases associated with this gene include neurodegeneration with brain iron accumulation 5 and 4.

WDR45 Antibody - References

1. <http://www.genecards.org/cgi-bin/carddisp.pl?gene=WDR45>
2. Strausberg R.L., et al. (2002) Proc Natl Acad Sci U S A. 99(26): 16899-16903.
3. Haack T.B., et al. (2012) Am J Hum Genet. 91(6): 1144-1149.