

**VMP1 Antibody**  
Catalog # ASM10540**Specification**

---

**VMP1 Antibody - Product Information**

Application	<b>WB, ICC</b>
Primary Accession	<a href="#">O96GC9</a>
Other Accession	<a href="#">NP_112200.2</a>
Host	<b>Rabbit</b>
Reactivity	<b>Human</b>
Clonality	<b>Polyclonal</b>
Format	<b>Biotin</b>

**Description**

Rabbit Anti-Human VMP1 Polyclonal

**Target/Specificity**

Detects ~46 kDa.

**Other Names**

TDC1 Antibody, Transmembrane protein 49 Antibody, TMEM49 Antibody, VMP1 Antibody, HSPC292 Antibody, Vacuole membrane protein 1 Antibody, ORF Names: Antibody

**Immunogen**

Synthetic peptide from the C-terminal of Human VMP1 (aa. 391-402)

**Purification**

Peptide Affinity Purified

Storage **-20°C****Storage Buffer**

PBS, 50% glycerol, 0.09% sodium azide

Shipping Temperature **Blue Ice or 4°C****Certificate of Analysis**

A 1:1000 dilution of SPC-680 was sufficient for detection of VMP1 in 15 µg of Human 293T Cell Lysates by ECL immunoblot analysis using goat anti-rabbit IgG:HRP as the secondary antibody.

**Cellular Localization**

Endoplasmic Reticulum-Golgi Intermediate Compartment Membrane | Multi-Pass Membrane Protein | Cell Membrane | Multi-Pass Membrane Protein | Vacuole Membrane | Multi-Pass Membrane Protein | Endoplasmic Reticulum

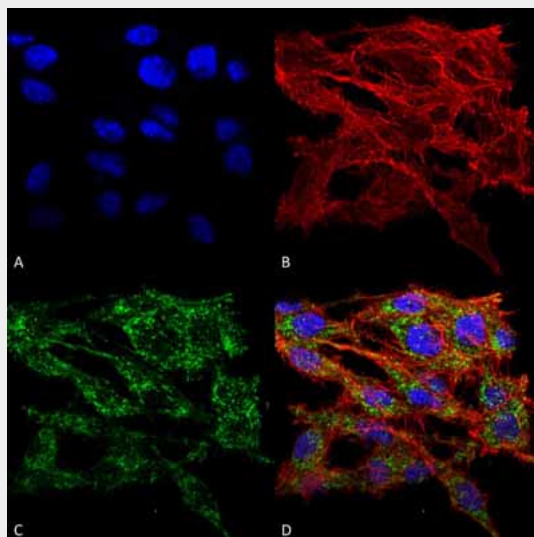
**VMP1 Antibody - Protocols**

Provided below are standard protocols that you may find useful for product applications.

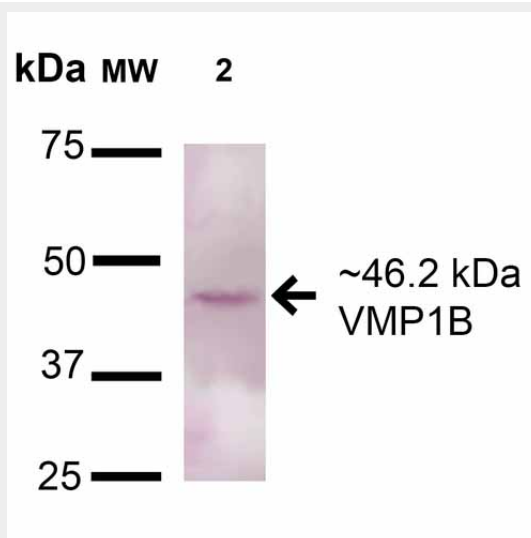
- [Western Blot](#)
- [Blocking Peptides](#)
- [Dot Blot](#)

- [Immunohistochemistry](#)
- [Immunofluorescence](#)
- [Immunoprecipitation](#)
- [Flow Cytometry](#)
- [Cell Culture](#)

### VMP1 Antibody - Images



Immunocytochemistry/Immunofluorescence analysis using Rabbit Anti-VMP1 Polyclonal Antibody (ASM10540). Tissue: Colon carcinoma cell line (RKO). Species: Human. Fixation: 4% Formaldehyde for 15 min at RT. Primary Antibody: Rabbit Anti-VMP1 Polyclonal Antibody (ASM10540) at 1:100 for 60 min at RT. Secondary Antibody: Goat Anti-Rabbit ATTO 488 at 1:100 for 60 min at RT. Counterstain: Phalloidin Texas Red F-Actin stain; DAPI (blue) nuclear stain at 1:1000, 1:5000 for 60 min at RT, 5 min at RT. Localization: Endoplasmic Reticulum-Golgi Intermediate Compartment Membrane, Vacuole Membrane. Magnification: 60X. (A) DAPI nuclear stain. (B) Phalloidin Texas Red F-Actin stain. (C) VMP1 Antibody. (D) Composite.



Western blot analysis of Rat Pancreas cell lysates showing detection of 46.2kDa VMP1 protein using Rabbit Anti-VMP1 Polyclonal Antibody (ASM10540). Lane 1: Molecular Weight Ladder (MW). Lane 2: Rat Pancreas cell lysates. Load: 15  $\mu$ g . Block: 5% Skim Milk in 1X TBST. Primary Antibody: Rabbit Anti-VMP1 Polyclonal Antibody (ASM10540) at 1:1000 for 16 hours at 4°C. Secondary

Antibody: Goat-Anti-Rabbit IgG: HRP at 1:200 for 60 min at RT. Color Development: TMB.  
Predicted/Observed Size: 46.2kDa. Other Band(s): Multiple bands for A549; Rat Brain shows a  
band at 60kDa, 75kDa, and 150kDa.