

beta Actin Antibody
Catalog # ASM10547**Specification**

beta Actin Antibody - Product Information

Application	WB, ICC
Primary Accession	P60709
Other Accession	NP_001092.1
Host	Rabbit
Reactivity	Human
Clonality	Polyclonal
Format	FITC

Description

Rabbit Anti-Human beta Actin Polyclonal

Target/Specificity

Predicted molecular weight at ~41.7kDa. A double band may be observed.

Other Names

A X actin like protein Antibody, ACTB Antibody, ACTB_HUMAN Antibody, Actin Antibody, Actin cytoplasmic 1 Antibody, actin beta Antibody, Actx Antibody, Beta-actin Antibody, PS1TP5 binding protein 1 Antibody

Immunogen

Synthetic peptide from the mid-protein range of human beta Actin

Purification

Peptide Affinity Purified

Storage **-20°C****Storage Buffer**

PBS, 50% glycerol, 0.09% sodium azide

Shipping Temperature **Blue Ice or 4°C****Certificate of Analysis**

A 1:1000 dilution of SPC-687 was sufficient for detection of beta Actin on 293T Rapamycin-treated lysates using Goat anti-rabbit IgG:HRP as the secondary antibody.

Cellular Localization

Cytoplasm | Cytoskeleton

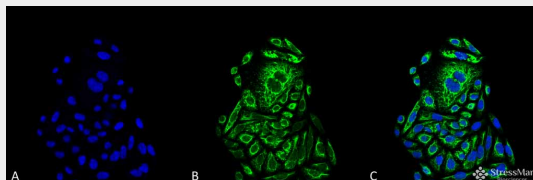
beta Actin Antibody - Protocols

Provided below are standard protocols that you may find useful for product applications.

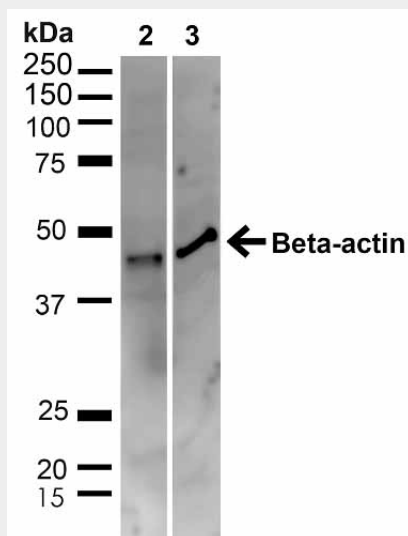
- [Western Blot](#)
- [Blocking Peptides](#)
- [Dot Blot](#)
- [Immunohistochemistry](#)

- [Immunofluorescence](#)
- [Immunoprecipitation](#)
- [Flow Cytometry](#)
- [Cell Culture](#)

beta Actin Antibody - Images



Immunocytochemistry/Immunofluorescence analysis using Rabbit Anti-Beta Actin Polyclonal Antibody (ASM10547). Tissue: Cervical Cancer cell line (HeLa). Species: Human. Fixation: 4% Formaldehyde for 15 min at RT. Primary Antibody: Rabbit Anti-Beta Actin Polyclonal Antibody (ASM10547) at 1:100 for 60 min at RT. Secondary Antibody: Goat Anti-Rabbit ATTO 488 at 1:100 for 60 min at RT. Counterstain: DAPI (blue) nuclear stain at 1:5000 for 5 min RT. Localization: Cytoplasm, Cytoskeleton. Magnification: 40X. (A) DAPI (blue) nuclear stain (B) Phalloidin Texas Red F-Actin stain (C) Beta Actin Antibody (D) Composite.



Western blot analysis of Human HeLa and 293T cell lysates showing detection of ~41.7kDa beta Actin protein using Rabbit Anti-beta Actin Polyclonal Antibody (ASM10547). Lane 1: MW Ladder. Lane 2: Human HeLa (20 µg). Lane 3: Human 293T (20 µg). Load: 20 µg. Block: 5% milk + TBST for 1 hour at RT. Primary Antibody: Rabbit Anti-beta Actin Polyclonal Antibody (ASM10547) at 1:1000 for 1 hour at RT. Secondary Antibody: Goat Anti-Rabbit: HRP at 1:2000 for 1 hour at RT. Color Development: TMB solution for 12 min at RT. Predicted/Observed Size: ~41.7kDa.

beta Actin Antibody - Background

Beta-actin is one of six different actin isoforms which have been identified in humans. This is one of the two nonmuscle cytoskeletal actins. Actins are highly conserved proteins that are involved in cell motility, structure and integrity.