

## Calcium Sensing Receptor Antibody Catalog # ASM10566

### Specification

---

#### Calcium Sensing Receptor Antibody - Product Information

Application	WB, ICC
Primary Accession	<a href="#">P41180</a>
Other Accession	<a href="#">NP_000379.2</a>
Host	Rabbit
Reactivity	Human
Clonality	Polyclonal

#### Description

Rabbit Anti-Human Calcium Sensing Receptor Polyclonal

#### Target/Specificity

Detects ~140 kDa.

#### Other Names

Hypocalciuric hypercalcemia 1 severe neonatal hyperparathyroidism Antibody, HHC Antibody, Extracellular calcium sensing receptor Antibody, FIH Antibody, Parathyroid Cell calcium-sensing receptor Antibody, CASR Antibody, CASR\_HUMAN Antibody, Ca sensing receptor Antibody, Extracellular calcium-sensing receptor Antibody, PCAR1 Antibody, FHH Antibody, Ca<sup>2+</sup> sensing receptor Antibody, EIG8 Antibody, Hypocalciuric hypercalcemia 1 Antibody, PCaR1 Antibody, GPRC2A Antibody, Extracellular calcium sensing receptor [Precursor] Antibody, PCAR 1 Antibody, Parathyroid cell calcium-sensing receptor 1 Antibody, HHC1 Antibody, Parathyroid Cell calcium sensing receptor Antibody, CAR Antibody, MGC138441 Antibody, NSHPT Antibody, CaSR Antibody, Ca<sup>2+</sup> sensing receptor 1 Antibody, Parathyroid Ca(2+) sensing receptor 1 Antibody,

#### Immunogen

Synthetic peptide of Human calcium-sensing receptor (CASR)

#### Purification

Peptide Affinity Purified

Storage -20°C

#### Storage Buffer

PBS, 50% glycerol, 0.09% sodium azide

Shipping Temperature Blue Ice or 4°C

#### Certificate of Analysis

A 1:1000 dilution of SPC-713 was sufficient for detection of calcium-sensing receptor (CASR) in 15 µg of Human HeLa Cell Lysates by ECL immunoblot analysis using goat anti-rabbit IgG:HRP as the secondary antibody.

#### Cellular Localization

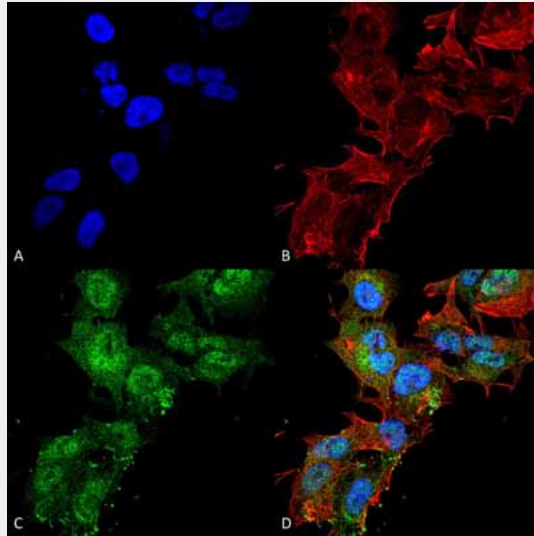
Cell Membrane | Multi-Pass Membrane Protein

#### Calcium Sensing Receptor Antibody - Protocols

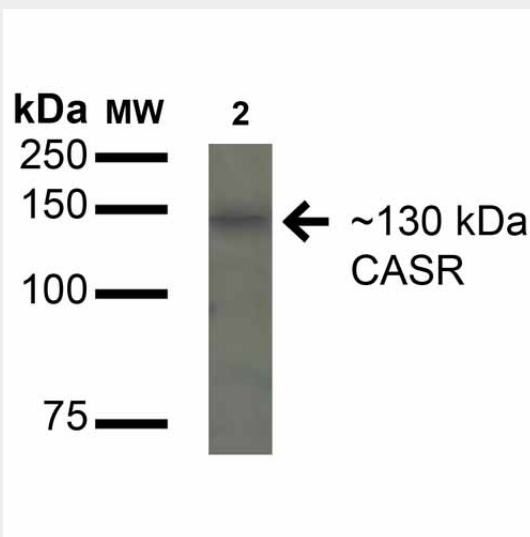
Provided below are standard protocols that you may find useful for product applications.

- [Western Blot](#)
- [Blocking Peptides](#)
- [Dot Blot](#)
- [Immunohistochemistry](#)
- [Immunofluorescence](#)
- [Immunoprecipitation](#)
- [Flow Cytometry](#)
- [Cell Culture](#)

### Calcium Sensing Receptor Antibody - Images



Immunocytochemistry/Immunofluorescence analysis using Rabbit Anti-Calcium Sensing Receptor Polyclonal Antibody (ASM10566). Tissue: Neuroblastoma cell line (SK-N-BE). Species: Human. Fixation: 4% Formaldehyde for 15 min at RT. Primary Antibody: Rabbit Anti-Calcium Sensing Receptor Polyclonal Antibody (ASM10566) at 1:100 for 60 min at RT. Secondary Antibody: Goat Anti-Mouse ATTO 488 at 1:200 for 60 min at RT. Counterstain: Phalloidin Texas Red F-Actin stain; DAPI (blue) nuclear stain at 1:1000, 1:5000 for 60 min at RT, 5 min at RT. Localization: Cell Membrane, Multi-Pass Membrane Protein. Magnification: 60X. (A) DAPI (blue) nuclear stain (B) Phalloidin Texas Red F-Actin stain (C) Calcium Sensing Receptor Antibody (D) Composite.



Western blot analysis of Rat Kidney cell lysates showing detection of 130kDa Calcium Sensing

Receptor protein using Rabbit Anti-Calcium Sensing Receptor Polyclonal Antibody (ASM10566). Lane 1: Molecular Weight Ladder (MW). Lane 2: Rat Kidney cell lysates. Load: 15  $\mu$ g. Block: 5% Skim Milk in 1X TBST. Primary Antibody: Rabbit Anti-Calcium Sensing Receptor Polyclonal Antibody (ASM10566) at 1:1000 for 16 hours at 4°C. Secondary Antibody: Goat-Anti-Rabbit IgG: HRP at 1:200 for 60 min at RT. Color Development: TMB. Predicted/Observed Size: 130kDa.