

TCF7L2 Antibody
Rabbit Anti-Human TCF7L2 Polyclonal
Catalog # ASM10571**Specification**

TCF7L2 Antibody - Product Information

Application	IHC
Primary Accession	O9NOB0
Other Accession	NP_001139746.1
Host	Rabbit
Reactivity	Rat
Clonality	Polyclonal
Format	TCF7L2
Target/Specificity	
TCF7L2	

Other Names

Transcription factor 7-like 2 antibody, HMG box transcription factor 4 antibody, hTCF 4 antibody, hTCF-4 antibody, T cell factor 4 antibody, T cell specific HMG box antibody, T cell specific transcription factor 4 antibody, T-cell factor 4 antibody, T-cell-specific transcription factor 4 antibody, TCF 4 antibody, TCF-4 antibody, TCF4 antibody, TCF7L2 antibody, TCF7L2 protein antibody, TF7L2_HUMAN antibody, Transcription factor 7 like 2 antibody, Transcription factor 7 like 2 T cell specific HMG box antibody

Immunogen

Synthetic peptide of Human TCF7L2 (400-500 aa), conjugated to Keyhole Limpet Haemocyanin (KLH).

Purification

Peptide Affinity Purified

Storage **-20°C**

Storage Buffer

PBS pH 7.4, 50% glycerol, 0.09% sodium azide *Storage buffer may change when conjugated

Shipping Temperature

Blue Ice or 4°C

Certificate of Analysis

A 1:1000 dilution of SPC-722 was sufficient for detection of TCF7L2 in 15 µg of rat kidney cell lysates by ECL immunoblot analysis using goat anti-rabbit IgG:HRP as the secondary antibody.

Cellular Localization

Nucleus | Pml Body

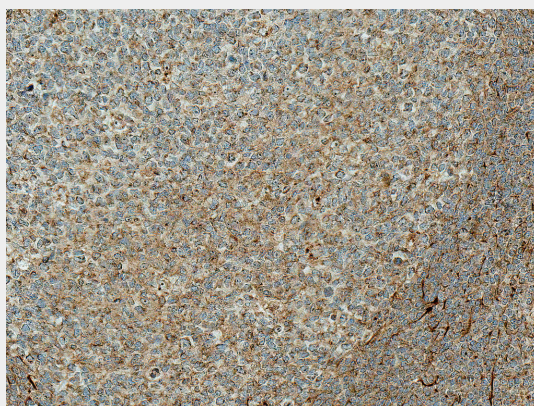
TCF7L2 Antibody - Protocols

Provided below are standard protocols that you may find useful for product applications.

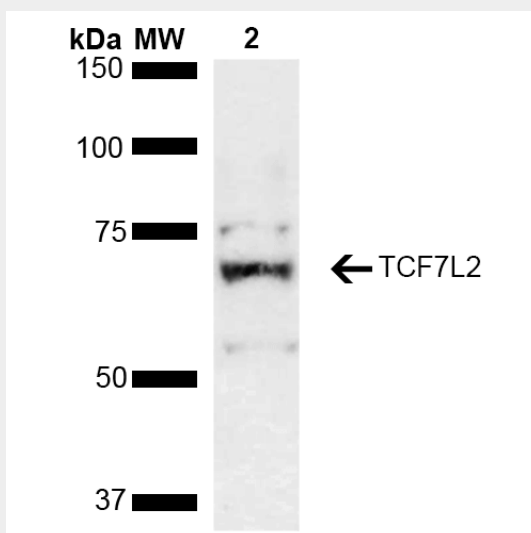
- [Western Blot](#)
- [Blocking Peptides](#)

- [Dot Blot](#)
- [Immunohistochemistry](#)
- [Immunofluorescence](#)
- [Immunoprecipitation](#)
- [Flow Cytometry](#)
- [Cell Culture](#)

TCF7L2 Antibody - Images



Immunohistochemistry analysis using Rabbit Anti-TCF7L2 Polyclonal Antibody (SPC-722). Tissue: Colon Cancer. Species: Human. Fixation: Formalin Fixed Paraffin-Embedded. Primary Antibody: Rabbit Anti-TCF7L2 Polyclonal Antibody (SPC-722) at 1:50 for 30 min at RT. Counterstain: Hematoxylin. Magnification: 10X. HRP-DAB Detection. | Western blot analysis of Rat kidney lysate showing detection of ~67.9 kDa TCF7L2 protein using Rabbit Anti-TCF7L2 Polyclonal Antibody (SPC-722). Lane 1: Molecular Weight Ladder (MW). Lane 2: Rat kidney lysate. Load: 15 µg. Block: 5% Skim Milk in 1X TBST. Primary Antibody: Rabbit Anti-TCF7L2 Polyclonal Antibody (SPC-722) at 1:1000 for 2 hours at RT. Secondary Antibody: Goat Anti-Rabbit HRP:IgG at 1:3000 for 1 hour at RT. Color Development: ECL solution for 5 min at RT. Predicted/Observed Size: ~67.9 kDa. Other Band(s): ~55 kDa isoform, ~75 kDa due to post translational modification.



Immunohistochemistry analysis using Rabbit Anti-TCF7L2 Polyclonal Antibody (SPC-722). Tissue: Colon Cancer. Species: Human. Fixation: Formalin Fixed Paraffin-Embedded. Primary Antibody: Rabbit Anti-TCF7L2 Polyclonal Antibody (SPC-722) at 1:50 for 30 min at RT. Counterstain: Hematoxylin. Magnification: 10X. HRP-DAB Detection. | Western blot analysis of Rat kidney lysate showing detection of ~67.9 kDa TCF7L2 protein using Rabbit Anti-TCF7L2 Polyclonal Antibody

(SPC-722). Lane 1: Molecular Weight Ladder (MW). Lane 2: Rat kidney lysate. Load: 15 µg. Block: 5% Skim Milk in 1X TBST. Primary Antibody: Rabbit Anti-TCF7L2 Polyclonal Antibody (SPC-722) at 1:1000 for 2 hours at RT. Secondary Antibody: Goat Anti-Rabbit HRP:IgG at 1:3000 for 1 hour at RT. Color Development: ECL solution for 5 min at RT. Predicted/Observed Size: ~67.9 kDa. Other Band(s): ~55 kDa isoform, ~75 kDa due to post translational modification.