

**TCF7 Antibody**  
**Rabbit Anti-Human TCF7 Polyclonal**  
**Catalog # ASM10573****Specification**

---

**TCF7 Antibody - Product Information**

Application	IHC
Primary Accession	<a href="#">P36402</a>
Other Accession	<a href="#">NP_001128323.2</a>
Host	Rabbit
Clonality	Polyclonal
Format	TCF7
<b>Target/Specificity</b>	
TCF7	

**Other Names**

T-cell-specific transcription factor 1 Antibody, T-cell factor 1 Antibody, Transcription factor 7 Antibody, TCF7 Antibody, TCF-7 Antibody, TCF-1 Antibody, TCF1 Antibody

**Immunogen**

Synthetic peptide from the C-terminal of Human TCF7 (284-384 aa), conjugated to Keyhole Limpet Haemocyanin (KLH).

**Purification**

Peptide Affinity Purified

Storage **-20°C**

**Storage Buffer**

PBS pH 7.4, 50% glycerol, 0.09% sodium azide \*Storage buffer may change when conjugated

Shipping Temperature

**Blue Ice or 4°C**

**Certificate of Analysis**

A 1:1000 dilution of SPC-724 was sufficient for detection of TCF7 in 15 µg of human HeLa cell lysates by ECL immunoblot analysis using goat anti-rabbit IgG:HRP as the secondary antibody.

**Cellular Localization**

Nucleus

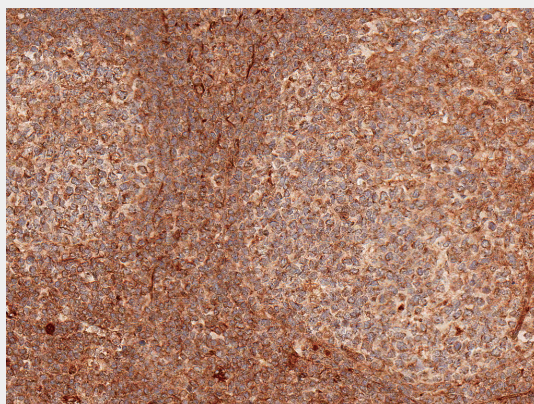
**TCF7 Antibody - Protocols**

Provided below are standard protocols that you may find useful for product applications.

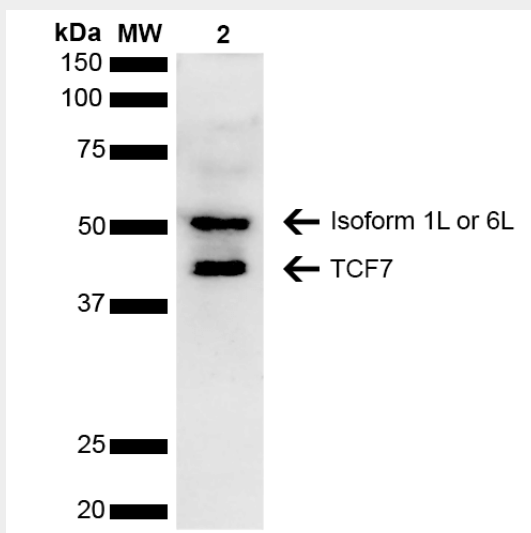
- [Western Blot](#)
- [Blocking Peptides](#)
- [Dot Blot](#)
- [Immunohistochemistry](#)
- [Immunofluorescence](#)
- [Immunoprecipitation](#)
- [Flow Cytometry](#)

• [Cell Culture](#)

**TCF7 Antibody - Images**



Immunohistochemistry analysis using Rabbit Anti-TCF7 Polyclonal Antibody (SPC-724). Tissue: Tonsil. Species: Human. Fixation: Formalin Fixed Paraffin-Embedded. Primary Antibody: Rabbit Anti-TCF7 Polyclonal Antibody (SPC-724) at 1:50 for 30 min at RT. Counterstain: Hematoxylin. Magnification: 20X. | Western blot analysis of Human Cervical cancer cell line (HeLa) lysate showing detection of ~41.6 kDa TCF7 protein using Rabbit Anti-TCF7 Polyclonal Antibody (SPC-724). Lane 1: Molecular Weight Ladder (MW). Lane 2: Cervical Cancer cell line (HeLa) lysate. Load: 10 µg. Block: 5% Skim Milk in 1X TBST. Primary Antibody: Rabbit Anti-TCF7 Polyclonal Antibody (SPC-724) at 1:1000 for 2 hours at RT. Secondary Antibody: Goat Anti-Rabbit HRP:IgG at 1:3000 for 1 hour at RT. Color Development: ECL solution for 5 min at RT. Predicted/Observed Size: ~41.6 kDa. Other Band(s): ~54 kDa isoform.



Immunohistochemistry analysis using Rabbit Anti-TCF7 Polyclonal Antibody (SPC-724). Tissue: Tonsil. Species: Human. Fixation: Formalin Fixed Paraffin-Embedded. Primary Antibody: Rabbit Anti-TCF7 Polyclonal Antibody (SPC-724) at 1:50 for 30 min at RT. Counterstain: Hematoxylin. Magnification: 20X. | Western blot analysis of Human Cervical cancer cell line (HeLa) lysate showing detection of ~41.6 kDa TCF7 protein using Rabbit Anti-TCF7 Polyclonal Antibody (SPC-724). Lane 1: Molecular Weight Ladder (MW). Lane 2: Cervical Cancer cell line (HeLa) lysate. Load: 10 µg. Block: 5% Skim Milk in 1X TBST. Primary Antibody: Rabbit Anti-TCF7 Polyclonal Antibody (SPC-724) at 1:1000 for 2 hours at RT. Secondary Antibody: Goat Anti-Rabbit HRP:IgG at 1:3000 for 1 hour at RT. Color Development: ECL solution for 5 min at RT. Predicted/Observed Size: ~41.6 kDa. Other Band(s): ~54 kDa isoform.