

**Wnt5a Antibody**  
**Rabbit Anti-Human Wnt5a Polyclonal**  
**Catalog # ASM10586****Specification**

---

**Wnt5a Antibody - Product Information**

Application	IHC
Primary Accession	<a href="#">P41221</a>
Other Accession	<a href="#">NP_001243034.1</a>
Host	Rabbit
Clonality	Polyclonal
Format	Wnt5a
Target/Specificity	
Wnt5a	

**Other Names**

WNT5A\_HUMAN Antibody, Protein Wnt 5a Antibody, WNT 5A protein Antibody, Wingless type MMTV integration site family member 5A Antibody, Wnt 5a Antibody, Protein Wnt-5a Antibody, WNT5A Antibody, hWNT 5A Antibody, hWNT5A Antibody, WNT 5A protein precursor Antibody, WNT5A protein precursor Antibody, Protein Wnt5a Antibody

**Immunogen**

Synthetic peptide of Human Wnt5a (200-300 aa), conjugated to Keyhole Limpet Haemocyanin (KLH).

**Purification**

Peptide Affinity Purified

Storage **-20°C**

**Storage Buffer**

PBS pH 7.4, 50% glycerol, 0.09% sodium azide \*Storage buffer may change when conjugated

Shipping Temperature

**Blue Ice or 4°C**

**Certificate of Analysis**

A 1:1000 dilution of SPC-737 was sufficient for detection of Wnt5a in 10 µg of human HeLa cell lysates by ECL immunoblot analysis using goat anti-rabbit IgG:HRP as the secondary antibody.

**Cellular Localization**

Secreted | Extracellular Space | Extracellular Matrix

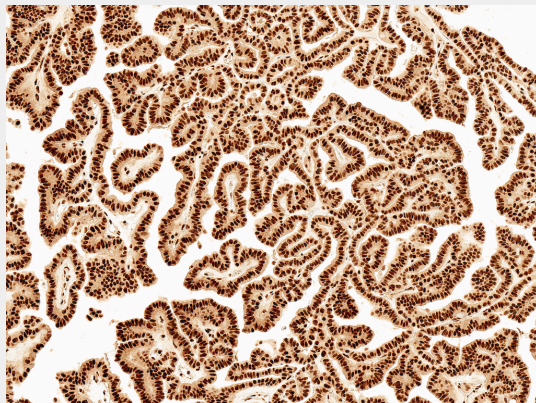
**Wnt5a Antibody - Protocols**

Provided below are standard protocols that you may find useful for product applications.

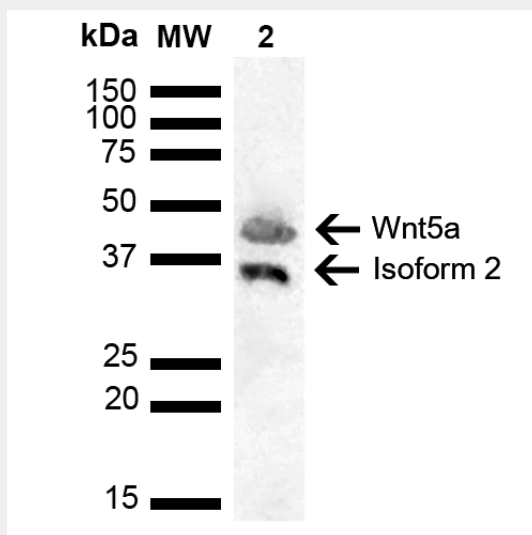
- [Western Blot](#)
- [Blocking Peptides](#)
- [Dot Blot](#)
- [Immunohistochemistry](#)
- [Immunofluorescence](#)

- [Immunoprecipitation](#)
- [Flow Cytometry](#)
- [Cell Culture](#)

## Wnt5a Antibody - Images



Immunohistochemistry analysis using Rabbit Anti-Wnt5a Polyclonal Antibody (SPC-737). Tissue: Thyroid Carcinoma. Species: Human. Fixation: Formalin Fixed Paraffin-Embedded. Primary Antibody: Rabbit Anti-Wnt5a Polyclonal Antibody (SPC-737) at 1:50 for 30 min at RT. Counterstain: Hematoxylin. Magnification: 10X. HRP-DAB Detection. | Western blot analysis of Human Cervical cancer cell line (HeLa) lysate showing detection of ~42.3 kDa Wnt5a protein using Rabbit Anti-Wnt5a Polyclonal Antibody (SPC-737). Lane 1: Molecular Weight Ladder (MW). Lane 2: Cervical Cancer cell line (HeLa) lysate. Load: 10 µg. Block: 5% Skim Milk in 1X TBST. Primary Antibody: Rabbit Anti-Wnt5a Polyclonal Antibody (SPC-737) at 1:1000 for 2 hours at RT. Secondary Antibody: Goat Anti-Rabbit HRP:IgG at 1:4000 for 1 hour at RT. Color Development: ECL solution for 5 min at RT. Predicted/Observed Size: ~42.3 kDa. Other Band(s): ~35 kDa isoform 2.



Immunohistochemistry analysis using Rabbit Anti-Wnt5a Polyclonal Antibody (SPC-737). Tissue: Thyroid Carcinoma. Species: Human. Fixation: Formalin Fixed Paraffin-Embedded. Primary Antibody: Rabbit Anti-Wnt5a Polyclonal Antibody (SPC-737) at 1:50 for 30 min at RT. Counterstain: Hematoxylin. Magnification: 10X. HRP-DAB Detection. | Western blot analysis of Human Cervical cancer cell line (HeLa) lysate showing detection of ~42.3 kDa Wnt5a protein using Rabbit Anti-Wnt5a Polyclonal Antibody (SPC-737). Lane 1: Molecular Weight Ladder (MW). Lane 2: Cervical Cancer cell line (HeLa) lysate. Load: 10 µg. Block: 5% Skim Milk in 1X TBST. Primary Antibody: Rabbit Anti-Wnt5a Polyclonal Antibody (SPC-737) at 1:1000 for 2 hours at RT. Secondary

Antibody: Goat Anti-Rabbit HRP:IgG at 1:4000 for 1 hour at RT. Color Development: ECL solution for 5 min at RT. Predicted/Observed Size: ~42.3 kDa. Other Band(s): ~35 kDa isoform 2.