

**Axin-1 Antibody**  
**Rabbit Anti-Human Axin-1 Polyclonal**  
**Catalog # ASM10597****Specification**

---

**Axin-1 Antibody - Product Information**

Application	IHC
Primary Accession	<a href="#">O15169</a>
Other Accession	<a href="#">NP_003493.1</a>
Host	Rabbit
Reactivity	Rat
Clonality	Polyclonal
Format	Axin-1
<b>Target/Specificity</b>	
Axin-1	

**Other Names**

AXIN1 Antibody, hAxin Antibody, Axin-1 Antibody, Axis inhibition protein 1 Antibody, AXIN Antibody, AI316800 antibody, AXIN antibody, Axin 1 antibody, Axin-1 antibody, axin1 antibody, AXIN1\_HUMAN antibody, Axis inhibition protein 1 antibody, Axis Inhibitor 1 antibody, Fu antibody, fused antibody, Fused, mouse, homolog of antibody, hAxin antibody, Kb antibody, Ki antibody, kinky antibody, knobbly antibody, MGC132911 antibody, MGC52315 antibody, PPP1R49 antibody, Protein Fused antibody, Protein phosphatase 1 regulatory subunit 49 antibody

**Immunogen**

Synthetic peptide from the mid-protein of Human Axin-1 (aa. 470-570)

**Purification**

Peptide Affinity Purified

Storage **-20°C**

**Storage Buffer**

PBS pH 7.4, 50% glycerol, 0.09% sodium azide \*Storage buffer may change when conjugated

Shipping Temperature

**Blue Ice or 4°C**

**Cellular Localization**

Cytoplasm | Nucleus | Membrane | Cell Membrane

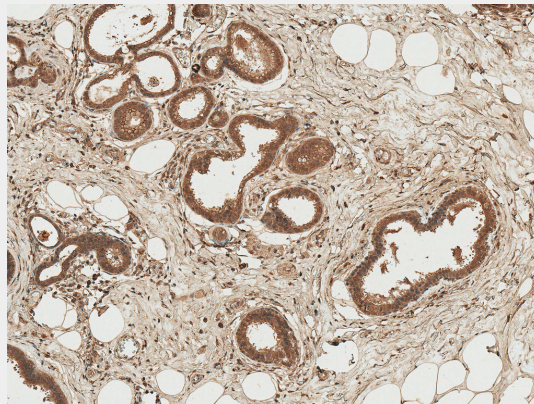
**Axin-1 Antibody - Protocols**

Provided below are standard protocols that you may find useful for product applications.

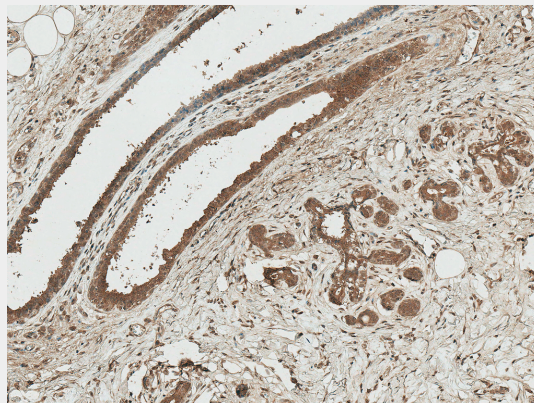
- [Western Blot](#)
- [Blocking Peptides](#)
- [Dot Blot](#)
- [Immunohistochemistry](#)
- [Immunofluorescence](#)
- [Immunoprecipitation](#)
- [Flow Cytometry](#)

- [Cell Culture](#)

## Axin-1 Antibody - Images

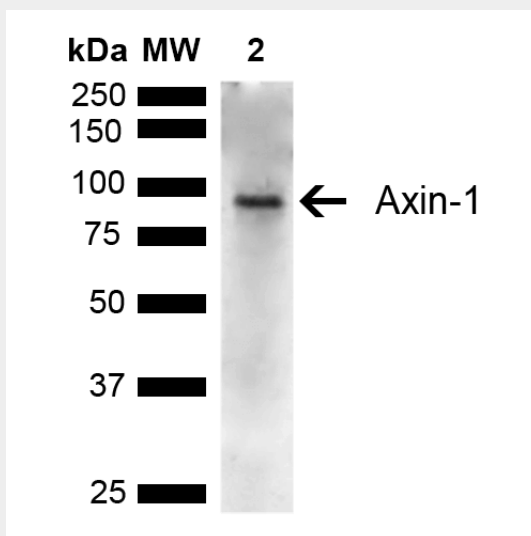


Immunohistochemistry analysis using Rabbit Anti-Axin 1 Polyclonal Antibody (SPC-748). Tissue: Breast. Species: Human. Fixation: Formalin Fixed Paraffin-Embedded. Primary Antibody: Rabbit Anti-Axin 1 Polyclonal Antibody (SPC-748) at 1:50 for 30 min at RT. Counterstain: Hematoxylin. Magnification: 10X. HRP-DAB Detection. | Immunohistochemistry analysis using Rabbit Anti-Axin 1 Polyclonal Antibody (SPC-748). Tissue: Breast. Species: Human. Fixation: Formalin Fixed Paraffin-Embedded. Primary Antibody: Rabbit Anti-Axin 1 Polyclonal Antibody (SPC-748) at 1:50 for 30 min at RT. Counterstain: Hematoxylin. Magnification: 10X. HRP-DAB Detection. | Western blot analysis of Rat Kidney showing detection of ~95 kDa Axin-1 protein using Rabbit Anti-Axin-1 Polyclonal Antibody (SPC-748). Lane 1: Molecular Weight Ladder (MW). Lane 2: Rat Kidney. Load: 15  $\mu$ g. Block: 5% Skim Milk in 1X TBST. Primary Antibody: Rabbit Anti-Axin-1 Polyclonal Antibody (SPC-748) at 1:1000 for 16 hours at 4°C. Secondary Antibody: Goat Anti-Rabbit IgG: HRP at 1:3000 for 1 hour at RT. Color Development: ECL solution for 5 min at RT. Predicted/Observed Size: ~95 kDa.



Immunohistochemistry analysis using Rabbit Anti-Axin 1 Polyclonal Antibody (SPC-748). Tissue: Breast. Species: Human. Fixation: Formalin Fixed Paraffin-Embedded. Primary Antibody: Rabbit Anti-Axin 1 Polyclonal Antibody (SPC-748) at 1:50 for 30 min at RT. Counterstain: Hematoxylin. Magnification: 10X. HRP-DAB Detection. | Immunohistochemistry analysis using Rabbit Anti-Axin 1 Polyclonal Antibody (SPC-748). Tissue: Breast. Species: Human. Fixation: Formalin Fixed Paraffin-Embedded. Primary Antibody: Rabbit Anti-Axin 1 Polyclonal Antibody (SPC-748) at 1:50 for 30 min at RT. Counterstain: Hematoxylin. Magnification: 10X. HRP-DAB Detection. | Western blot analysis of Rat Kidney showing detection of ~95 kDa Axin-1 protein using Rabbit Anti-Axin-1 Polyclonal Antibody (SPC-748). Lane 1: Molecular Weight Ladder (MW). Lane 2: Rat Kidney. Load: 15  $\mu$ g. Block: 5% Skim Milk in 1X TBST. Primary Antibody: Rabbit Anti-Axin-1 Polyclonal Antibody (SPC-748) at 1:1000 for 16 hours at 4°C. Secondary Antibody: Goat Anti-Rabbit IgG: HRP at 1:3000

for 1 hour at RT. Color Development: ECL solution for 5 min at RT. Predicted/Observed Size: ~95 kDa.



Immunohistochemistry analysis using Rabbit Anti-Axin 1 Polyclonal Antibody (SPC-748). Tissue: Breast. Species: Human. Fixation: Formalin Fixed Paraffin-Embedded. Primary Antibody: Rabbit Anti-Axin 1 Polyclonal Antibody (SPC-748) at 1:50 for 30 min at RT. Counterstain: Hematoxylin. Magnification: 10X. HRP-DAB Detection. | Immunohistochemistry analysis using Rabbit Anti-Axin 1 Polyclonal Antibody (SPC-748). Tissue: Breast. Species: Human. Fixation: Formalin Fixed Paraffin-Embedded. Primary Antibody: Rabbit Anti-Axin 1 Polyclonal Antibody (SPC-748) at 1:50 for 30 min at RT. Counterstain: Hematoxylin. Magnification: 10X. HRP-DAB Detection. | Western blot analysis of Rat Kidney showing detection of ~95 kDa Axin-1 protein using Rabbit Anti-Axin-1 Polyclonal Antibody (SPC-748). Lane 1: Molecular Weight Ladder (MW). Lane 2: Rat Kidney. Load: 15 µg. Block: 5% Skim Milk in 1X TBST. Primary Antibody: Rabbit Anti-Axin-1 Polyclonal Antibody (SPC-748) at 1:1000 for 16 hours at 4°C. Secondary Antibody: Goat Anti-Rabbit IgG: HRP at 1:3000 for 1 hour at RT. Color Development: ECL solution for 5 min at RT. Predicted/Observed Size: ~95 kDa.