

**Presenilin 1 Antibody**  
**Rabbit Anti-Human Presenilin 1 Polyclonal**  
**Catalog # ASM10604**

**Specification**

---

**Presenilin 1 Antibody - Product Information**

Application	IHC
Primary Accession	<a href="#">P49768</a>
Other Accession	<a href="#">NP_000012.1</a>
Host	Rabbit
Clonality	Polyclonal
Format	Presenilin 1
<b>Target/Specificity</b>	
Presenilin 1	

**Other Names**

Homo Sapiens Clone CC44 Senilin 1 Antibody, PSEN1 Antibody, PS 1 Antibody, PSNL1 Antibody, FAD Antibody, Protein S182 Antibody, Ad3h Antibody, PSN1\_HUMAN Antibody, Presenilin-1 Antibody, AD3 Antibody, EC:3.4.23.- Antibody, PS1-CTF12 Antibody, PS-1 Antibody, PS1 Antibody, Presenilin-1 CTF12 Antibody, S182 Antibody

**Immunogen**

Synthetic peptide from the N-terminal of Human Presenilin 1 (aa. 1-100)

**Purification**

Peptide Affinity Purified

Storage **-20°C**

**Storage Buffer**

PBS pH 7.4, 50% glycerol, 0.09% sodium azide \*Storage buffer may change when conjugated

Shipping Temperature

**Blue Ice or 4°C**

**Cellular Localization**

Endoplasmic Reticulum Membrane | Multi-Pass Membrane Protein | Golgi Apparatus Membrane | Multi-Pass Membrane Protein | Cell Surface | Cell Membrane

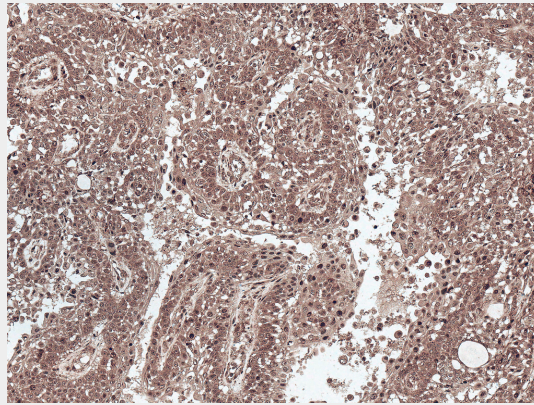
**Presenilin 1 Antibody - Protocols**

Provided below are standard protocols that you may find useful for product applications.

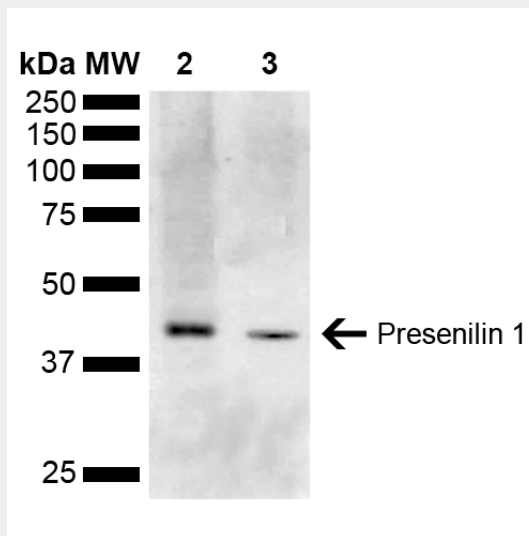
- [Western Blot](#)
- [Blocking Peptides](#)
- [Dot Blot](#)
- [Immunohistochemistry](#)
- [Immunofluorescence](#)
- [Immunoprecipitation](#)
- [Flow Cytometry](#)
- [Cell Culture](#)

**Presenilin 1 Antibody - Images**

---



Immunohistochemistry analysis using Rabbit Anti-Presenilin 1 Polyclonal Antibody (SPC-755). Tissue: Liver. Species: Human. Fixation: Formalin Fixed Paraffin-Embedded. Primary Antibody: Rabbit Anti-Presenilin 1 Polyclonal Antibody (SPC-755) at 1:50 for 30 min at RT. Counterstain: Hematoxylin. Magnification: 10X. | Western blot analysis of Mouse Kidney, Liver showing detection of ~52.7 kDa Presenilin 1 protein using Rabbit Anti-Presenilin 1 Polyclonal Antibody (SPC-755). Lane 1: Molecular Weight Ladder (MW). Lane 2: Mouse Liver. Lane 3: Mouse Kidney. Load: 15 µg. Block: 5% Skim Milk in 1X TBST. Primary Antibody: Rabbit Anti-Presenilin 1 Polyclonal Antibody (SPC-755) at 1:1000 for 2 hours at RT. Secondary Antibody: Goat Anti-Rabbit IgG: HRP at 1:5000 for 1 hour at RT. Color Development: ECL solution for 5 min at RT. Predicted/Observed Size: ~52.7 kDa. Other Band(s): 42.7 kDa band is isoform 5 .



Immunohistochemistry analysis using Rabbit Anti-Presenilin 1 Polyclonal Antibody (SPC-755). Tissue: Liver. Species: Human. Fixation: Formalin Fixed Paraffin-Embedded. Primary Antibody: Rabbit Anti-Presenilin 1 Polyclonal Antibody (SPC-755) at 1:50 for 30 min at RT. Counterstain: Hematoxylin. Magnification: 10X. | Western blot analysis of Mouse Kidney, Liver showing detection of ~52.7 kDa Presenilin 1 protein using Rabbit Anti-Presenilin 1 Polyclonal Antibody (SPC-755). Lane 1: Molecular Weight Ladder (MW). Lane 2: Mouse Liver. Lane 3: Mouse Kidney. Load: 15 µg. Block: 5% Skim Milk in 1X TBST. Primary Antibody: Rabbit Anti-Presenilin 1 Polyclonal Antibody (SPC-755) at 1:1000 for 2 hours at RT. Secondary Antibody: Goat Anti-Rabbit IgG: HRP at 1:5000 for 1 hour at RT. Color Development: ECL solution for 5 min at RT. Predicted/Observed Size: ~52.7 kDa. Other Band(s): 42.7 kDa band is isoform 5 .