

**SFRP2 Antibody**  
**Rabbit Anti-Human SFRP2 Polyclonal**  
**Catalog # ASM10635****Specification**

---

**SFRP2 Antibody - Product Information**

Application	IHC
Primary Accession	<a href="#">O96HF1</a>
Other Accession	<a href="#">NP_003004.1</a>
Host	Rabbit
Clonality	Polyclonal
Format	Unconjugated
<b>Target/Specificity</b>	
SFRP2	

**Other Names**

SDF5 Antibody, Secreted frizzled-related protein 2 Antibody, FRP 2 Antibody, UNQ361/PRO697 Antibody, sFRP-2 Antibody, SFRP2 Antibody, FKSG12 Antibody, SFRP2\_HUMAN Antibody, MGC153618 Antibody, Frizzled related protein 2 Antibody, MGC53344 Antibody, FRP2 Antibody, FRP-2 Antibody, SARP1 Antibody, AI851596 Antibody, SARP 1 Antibody, MGC128911 Antibody, SARP-1 Antibody, Secreted apoptosis related protein 1 Antibody, ORF Names: Antibody, Secreted apoptosis-related protein 1 Antibody, SDF 5 Antibody, Sfrp2 protein Antibody, sFRP 2 Antibody, Secreted frizzled related protein 2 Antibody

**Immunogen**

Synthetic peptide from the C-terminal of Human Secreted frizzled-related protein 2 (aa. 195-295)

**Purification**

Peptide Affinity Purified

Storage **-20°C**

**Storage Buffer**

PBS pH 7.4, 50% glycerol, 0.09% sodium azide \*Storage buffer may change when conjugated

Shipping Temperature

**Blue Ice or 4°C**

**Certificate of Analysis**

A 1:1000 dilution of SPC-786 was sufficient for detection of SFRP2 in 15 µg of mouse Brain cell lysates by ECL immunoblot analysis using goat anti-rabbit IgG:HRP as the secondary antibody.

**Cellular Localization**

Secreted

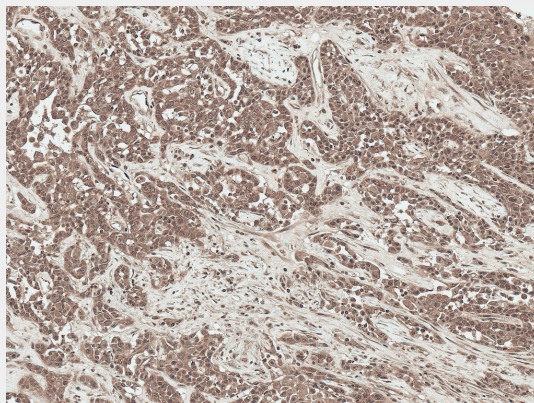
**SFRP2 Antibody - Protocols**

Provided below are standard protocols that you may find useful for product applications.

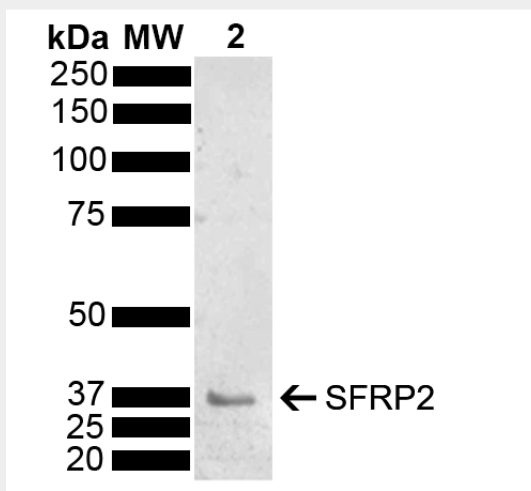
- [Western Blot](#)
- [Blocking Peptides](#)
- [Dot Blot](#)

- [Immunohistochemistry](#)
- [Immunofluorescence](#)
- [Immunoprecipitation](#)
- [Flow Cytometry](#)
- [Cell Culture](#)

## SFRP2 Antibody - Images



Immunohistochemistry analysis using Rabbit Anti-SFRP2 Polyclonal Antibody (SPC-786). Tissue: Liver. Species: Human. Fixation: Formalin Fixed Paraffin-Embedded. Primary Antibody: Rabbit Anti-SFRP2 Polyclonal Antibody (SPC-786) at 1:50 for 30 min at RT. Counterstain: Hematoxylin. Magnification: 20X. HRP-DAB Detection. | Western blot analysis of Mouse Brain showing detection of 33.5 kDa SFRP2 protein using Rabbit Anti-SFRP2 Polyclonal Antibody (SPC-786). Load: 15 µg. Block: 5% Skim Milk powder in TBST. Primary Antibody: Rabbit Anti-SFRP2 Polyclonal Antibody (SPC-786) at 1:1000 for 2 hours at RT with shaking. Secondary Antibody: Goat Anti-Rabbit IgG: HRP at 1:5000 for 1 hour at RT. Color Development: ECL solution for 5 min at RT. Predicted/Observed Size: 33.5 kDa. Other Band(s): 37 kDa.



Immunohistochemistry analysis using Rabbit Anti-SFRP2 Polyclonal Antibody (SPC-786). Tissue: Liver. Species: Human. Fixation: Formalin Fixed Paraffin-Embedded. Primary Antibody: Rabbit Anti-SFRP2 Polyclonal Antibody (SPC-786) at 1:50 for 30 min at RT. Counterstain: Hematoxylin. Magnification: 20X. HRP-DAB Detection. | Western blot analysis of Mouse Brain showing detection of 33.5 kDa SFRP2 protein using Rabbit Anti-SFRP2 Polyclonal Antibody (SPC-786). Load: 15 µg. Block: 5% Skim Milk powder in TBST. Primary Antibody: Rabbit Anti-SFRP2 Polyclonal Antibody (SPC-786) at 1:1000 for 2 hours at RT with shaking. Secondary Antibody: Goat Anti-Rabbit IgG:

HRP at 1:5000 for 1 hour at RT. Color Development: ECL solution for 5 min at RT.  
Predicted/Observed Size: 33.5 kDa. Other Band(s): 37 kDa.