

MCL 1 Antibody
Rabbit Anti-Human MCL1 Polyclonal
Catalog # ASM10640**Specification****MCL 1 Antibody - Product Information**

| | |
|---------------------------|--------------------------------|
| Application | IHC |
| Primary Accession | Q07820 |
| Other Accession | NP_001184249.1 |
| Host | Rabbit |
| Reactivity | Rat |
| Clonality | Polyclonal |
| Format | MCL1 |
| Target/Specificity | |
| MCL1 | |

Other Names

Myeloid cell leukemia sequence 1 Antibody, MGC104264 Antibody, EAT Antibody, MCL 1 Antibody, Bcl 2 related protein EAT/mcl1 Antibody, MCL1L Antibody, OTTHUMP00000032794 Antibody, MCL1_HUMAN Antibody, MGC1839 Antibody, Bcl-2-related protein EAT/mcl1 Antibody, Myeloid cell leukemia sequence 1 isoform 1 Antibody, Induced myeloid leukemia cell differentiation protein Mcl 1 Antibody, Myeloid cell leukemia ES Antibody, Induced myeloid leukemia cell differentiation protein Mcl-1 Antibody, MCL1-ES Antibody, MCL1S Antibody, MCL1 Antibody, Myeloid cell leukemia sequence 1 BCL2 related Antibody, mcl1/EAT Antibody, Bcl2-L-3 Antibody, OTTHUMP00000032795 Antibody, Myeloid Cell Leukemia 1 Antibody, Bcl-2-like protein 3 Antibody, BCL2L3 Antibody, TM Antibody, BCL2 related Antibody

Immunogen

Synthetic peptide from the mid-protein of Human Induced myeloid leukemia cell differentiation protein Mcl-1 (aa. 70-170)

Purification

Peptide Affinity Purified

Storage **-20°C**

Storage Buffer

PBS pH 7.4, 50% glycerol, 0.09% sodium azide *Storage buffer may change when conjugated

Shipping Temperature

Blue Ice or 4°C

Certificate of Analysis

A 1:1000 dilution of SPC-791 was sufficient for detection of MCL1 in 15 µg of mouse, rat Liver cell lysates by ECL immunoblot analysis using goat anti-rabbit IgG:HRP as the secondary antibody.

Cellular Localization

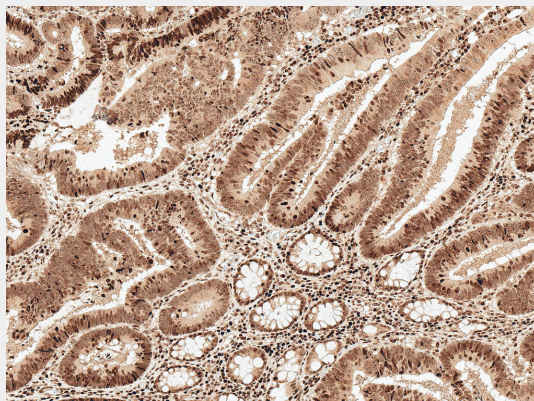
Membrane | Single-Pass Membrane Protein | Cytoplasm | Mitochondrion | Nucleus | Nucleoplasm

MCL 1 Antibody - Protocols

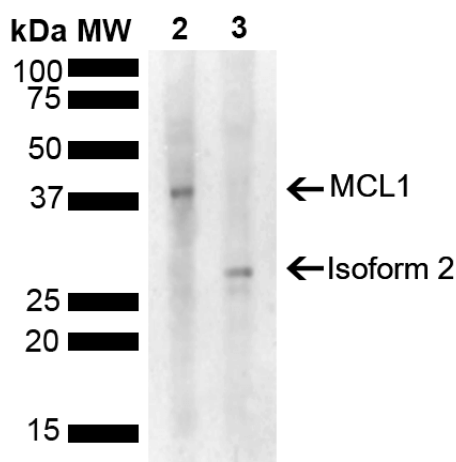
Provided below are standard protocols that you may find useful for product applications.

- [Western Blot](#)
- [Blocking Peptides](#)
- [Dot Blot](#)
- [Immunohistochemistry](#)
- [Immunofluorescence](#)
- [Immunoprecipitation](#)
- [Flow Cytometry](#)
- [Cell Culture](#)

MCL 1 Antibody - Images



Immunohistochemistry analysis using Rabbit Anti-MCL 1 Polyclonal Antibody (SPC-791). Tissue: Colon Cancer. Species: Human. Fixation: Formalin Fixed Paraffin-Embedded. Primary Antibody: Rabbit Anti-MCL 1 Polyclonal Antibody (SPC-791) at 1:50 for 30 min at RT. Counterstain: Hematoxylin. Magnification: 10X. HRP-DAB Detection. | Western blot analysis of Rat, Mouse Liver showing detection of 37.3 kDa MCL1 protein using Rabbit Anti-MCL1 Polyclonal Antibody (SPC-791). Load: 15 µg. Block: 5% Skim Milk powder in TBST. Primary Antibody: Rabbit Anti-MCL1 Polyclonal Antibody (SPC-791) at 1:1000 for 2 hours at RT with shaking. Secondary Antibody: Goat Anti-Rabbit IgG: HRP at 1:5000 for 1 hour at RT. Color Development: ECL solution for 5 min at RT. Predicted/Observed Size: 37.3 kDa . Other Band(s): 28.6 kDa .



Immunohistochemistry analysis using Rabbit Anti-MCL 1 Polyclonal Antibody (SPC-791). Tissue: Colon Cancer. Species: Human. Fixation: Formalin Fixed Paraffin-Embedded. Primary Antibody: Rabbit Anti-MCL 1 Polyclonal Antibody (SPC-791) at 1:50 for 30 min at RT. Counterstain: Hematoxylin. Magnification: 10X. HRP-DAB Detection. | Western blot analysis of Rat, Mouse Liver

showing detection of 37.3 kDa MCL1 protein using Rabbit Anti-MCL1 Polyclonal Antibody (SPC-791). Load: 15 µg. Block: 5% Skim Milk powder in TBST. Primary Antibody: Rabbit Anti-MCL1 Polyclonal Antibody (SPC-791) at 1:1000 for 2 hours at RT with shaking. Secondary Antibody: Goat Anti-Rabbit IgG: HRP at 1:5000 for 1 hour at RT. Color Development: ECL solution for 5 min at RT. Predicted/Observed Size: 37.3 kDa . Other Band(s): 28.6 kDa .