

**RICTOR Antibody**  
**Rabbit Anti-Human RICTOR Polyclonal**  
**Catalog # ASM10646****Specification**

---

**RICTOR Antibody - Product Information**

Application	IHC
Primary Accession	<a href="#">Q6R327</a>
Other Accession	<a href="#">NP_001272368.1</a>
Host	Rabbit
Clonality	Polyclonal
Format	RICTOR
<b>Target/Specificity</b>	
RICTOR	

**Other Names**

MGC39830 Antibody, RICTOR Antibody, AVO3 Antibody, PIA Antibody, RICTR\_HUMAN Antibody, Pianissimo Antibody, Likely ortholog of mouse TORC2 specific protein AVO3 (*S. cerevisiae*) Antibody, RICTR Antibody, Rictor Antibody, DKFZp686B11164 Antibody, KIAA1999 Antibody, AVO3 homolog Antibody, RPTOR independent companion of MTOR complex 2 Antibody, Rapamycin-insensitive companion of mTOR Antibody, hAVO3 Antibody, mAVO3 Antibody, TORC2 specific protein AVO3 Antibody, Rapamycin insensitive companion of mTOR Antibody

**Immunogen**

Synthetic peptide from the mid-protein of Human Rapamycin-insensitive companion of mTOR (aa. 1060-1160)

**Purification**

Peptide Affinity Purified

Storage **-20°C**

**Storage Buffer**

PBS pH 7.4, 50% glycerol, 0.09% sodium azide \*Storage buffer may change when conjugated

Shipping Temperature

**Blue Ice or 4°C**

**Certificate of Analysis**

A 1:1000 dilution of SPC-797 was sufficient for detection of RICTOR in 15 µg of mouse Brain cell lysates by ECL immunoblot analysis using goat anti-rabbit IgG:HRP as the secondary antibody.

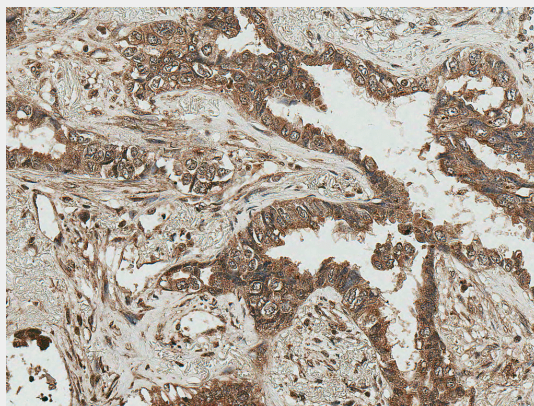
**RICTOR Antibody - Protocols**

Provided below are standard protocols that you may find useful for product applications.

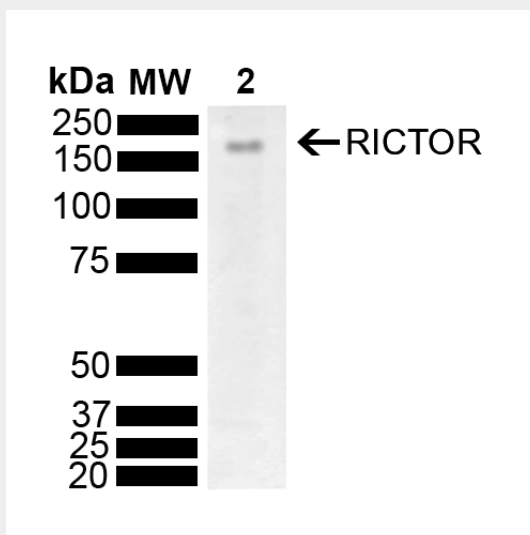
- [Western Blot](#)
- [Blocking Peptides](#)
- [Dot Blot](#)
- [Immunohistochemistry](#)
- [Immunofluorescence](#)
- [Immunoprecipitation](#)

- [Flow Cytometry](#)
- [Cell Culture](#)

## RICTOR Antibody - Images



Immunohistochemistry analysis using Rabbit Anti-RICTOR Polyclonal Antibody (SPC-797). Tissue: Lung Cancer. Species: Human. Fixation: Formalin Fixed Paraffin-Embedded. Primary Antibody: Rabbit Anti-RICTOR Polyclonal Antibody (SPC-797) at 1:50 for 30 min at RT. Counterstain: Hematoxylin. Magnification: 20X. HRP-DAB Detection. | Western blot analysis of Mouse Brain showing detection of 192 kDa RICTOR protein using Rabbit Anti-RICTOR Polyclonal Antibody (SPC-797). Load: 10 µg. Block: 5% Skim Milk powder in TBST. Primary Antibody: Rabbit Anti-RICTOR Polyclonal Antibody (SPC-797) at 1:1000 for 2 hours at RT with shaking. Secondary Antibody: Goat Anti-Rabbit IgG: HRP at 1:5000 for 1 hour at RT. Color Development: ECL solution for 5 min at RT. Predicted/Observed Size: 192 kDa.



Immunohistochemistry analysis using Rabbit Anti-RICTOR Polyclonal Antibody (SPC-797). Tissue: Lung Cancer. Species: Human. Fixation: Formalin Fixed Paraffin-Embedded. Primary Antibody: Rabbit Anti-RICTOR Polyclonal Antibody (SPC-797) at 1:50 for 30 min at RT. Counterstain: Hematoxylin. Magnification: 20X. HRP-DAB Detection. | Western blot analysis of Mouse Brain showing detection of 192 kDa RICTOR protein using Rabbit Anti-RICTOR Polyclonal Antibody (SPC-797). Load: 10 µg. Block: 5% Skim Milk powder in TBST. Primary Antibody: Rabbit Anti-RICTOR Polyclonal Antibody (SPC-797) at 1:1000 for 2 hours at RT with shaking. Secondary Antibody: Goat Anti-Rabbit IgG: HRP at 1:5000 for 1 hour at RT. Color Development: ECL solution for 5 min at RT. Predicted/Observed Size: 192 kDa.