

**HO-2 Antibody**  
**Rabbit Anti-Human HO-2 Polyclonal**  
**Catalog # ASM10648****Specification**

---

**HO-2 Antibody - Product Information**

Application	IHC
Primary Accession	<a href="#">P30519</a>
Other Accession	<a href="#">NP_001120676.1</a>
Host	Rabbit
Reactivity	Rat
Clonality	Polyclonal
Format	HO-2
<b>Target/Specificity</b>	
HO-2	

**Other Names**

Heme oxygenase 2 Antibody, Heme oxygenase (decycling) 2 Antibody, Heme oxygenase (decyclizing) 2 Antibody, HMOX 2 Antibody, HMOX2 Antibody, HMOX2\_HUMAN Antibody, HO 2 Antibody, HO2 antibody

**Immunogen**

Synthetic peptide from the full length of Human HO-2

**Purification**

Protein A Purified

Storage **-20°C**

**Storage Buffer**

PBS pH 7.4, 50% glycerol, 0.09% sodium azide \*Storage buffer may change when conjugated

Shipping Temperature

**Blue Ice or 4°C**

**Certificate of Analysis**

A 1:500 dilution of SPC-799 was sufficient for detection of HO-2 in 15 µg of mouse, rat Brain cell lysates by ECL immunoblot analysis using goat anti-rabbit IgG:HRP as the secondary antibody.

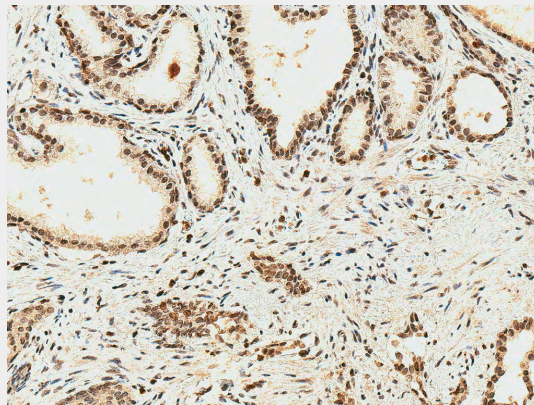
**HO-2 Antibody - Protocols**

Provided below are standard protocols that you may find useful for product applications.

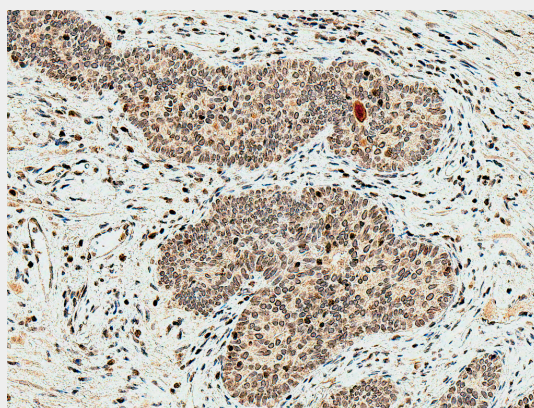
- [Western Blot](#)
- [Blocking Peptides](#)
- [Dot Blot](#)
- [Immunohistochemistry](#)
- [Immunofluorescence](#)
- [Immunoprecipitation](#)
- [Flow Cytometry](#)
- [Cell Culture](#)

**HO-2 Antibody - Images**

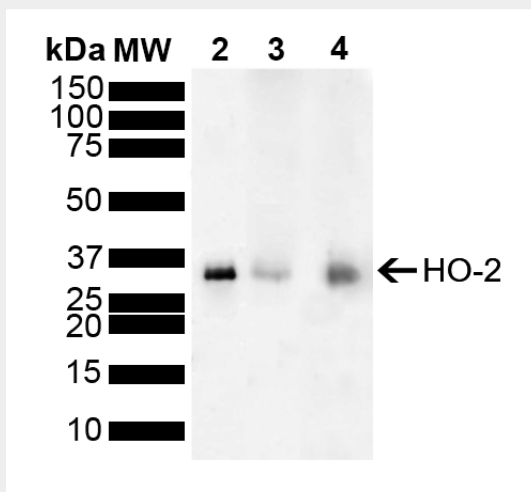
---



Immunohistochemistry analysis using Rabbit Anti-HO-2 Polyclonal Antibody (SPC-799). Tissue: Prostate. Species: Human. Fixation: Formalin Fixed Paraffin-Embedded. Primary Antibody: Rabbit Anti-HO-2 Polyclonal Antibody (SPC-799) at 1:50 for 30 min at RT. Counterstain: Hematoxylin. Magnification: 20X. HRP-DAB Detection. | Immunohistochemistry analysis using Rabbit Anti-HO-2 Polyclonal Antibody (SPC-799). Tissue: Prostate. Species: Human. Fixation: Formalin Fixed Paraffin-Embedded. Primary Antibody: Rabbit Anti-HO-2 Polyclonal Antibody (SPC-799) at 1:50 for 30 min at RT. Counterstain: Hematoxylin. Magnification: 20X. HRP-DAB Detection. | Western blot analysis of Mouse, Rat Brain showing detection of ~36 kDa HO-2 protein using Rabbit Anti-HO-2 Polyclonal Antibody (SPC-799). Load: 15 µg. Block: 5% Skim Milk powder in TBST. Primary Antibody: Rabbit Anti-HO-2 Polyclonal Antibody (SPC-799) at 1:1000 for 2 hours at RT with shaking. Secondary Antibody: Goat Anti-Rabbit IgG: HRP at 1:4000 for 1 hour at RT. Color Development: ECL solution for 5 min at RT. Predicted/Observed Size: ~36 kDa.



Immunohistochemistry analysis using Rabbit Anti-HO-2 Polyclonal Antibody (SPC-799). Tissue: Prostate. Species: Human. Fixation: Formalin Fixed Paraffin-Embedded. Primary Antibody: Rabbit Anti-HO-2 Polyclonal Antibody (SPC-799) at 1:50 for 30 min at RT. Counterstain: Hematoxylin. Magnification: 20X. HRP-DAB Detection. | Immunohistochemistry analysis using Rabbit Anti-HO-2 Polyclonal Antibody (SPC-799). Tissue: Prostate. Species: Human. Fixation: Formalin Fixed Paraffin-Embedded. Primary Antibody: Rabbit Anti-HO-2 Polyclonal Antibody (SPC-799) at 1:50 for 30 min at RT. Counterstain: Hematoxylin. Magnification: 20X. HRP-DAB Detection. | Western blot analysis of Mouse, Rat Brain showing detection of ~36 kDa HO-2 protein using Rabbit Anti-HO-2 Polyclonal Antibody (SPC-799). Load: 15 µg. Block: 5% Skim Milk powder in TBST. Primary Antibody: Rabbit Anti-HO-2 Polyclonal Antibody (SPC-799) at 1:1000 for 2 hours at RT with shaking. Secondary Antibody: Goat Anti-Rabbit IgG: HRP at 1:4000 for 1 hour at RT. Color Development: ECL solution for 5 min at RT. Predicted/Observed Size: ~36 kDa.



Immunohistochemistry analysis using Rabbit Anti-HO-2 Polyclonal Antibody (SPC-799). Tissue: Prostate. Species: Human. Fixation: Formalin Fixed Paraffin-Embedded. Primary Antibody: Rabbit Anti-HO-2 Polyclonal Antibody (SPC-799) at 1:50 for 30 min at RT. Counterstain: Hematoxylin. Magnification: 20X. HRP-DAB Detection. | Immunohistochemistry analysis using Rabbit Anti-HO-2 Polyclonal Antibody (SPC-799). Tissue: Prostate. Species: Human. Fixation: Formalin Fixed Paraffin-Embedded. Primary Antibody: Rabbit Anti-HO-2 Polyclonal Antibody (SPC-799) at 1:50 for 30 min at RT. Counterstain: Hematoxylin. Magnification: 20X. HRP-DAB Detection. | Western blot analysis of Mouse, Rat Brain showing detection of ~36 kDa HO-2 protein using Rabbit Anti-HO-2 Polyclonal Antibody (SPC-799). Load: 15 µg. Block: 5% Skim Milk powder in TBST. Primary Antibody: Rabbit Anti-HO-2 Polyclonal Antibody (SPC-799) at 1:1000 for 2 hours at RT with shaking. Secondary Antibody: Goat Anti-Rabbit IgG: HRP at 1:4000 for 1 hour at RT. Color Development: ECL solution for 5 min at RT. Predicted/Observed Size: ~36 kDa.