

ELOVL3 Antibody
ELOVL3 Antibody, Clone V61P2B3-D10
Catalog # ASM10680**Specification**

ELOVL3 Antibody - Product Information

Primary Accession	O9HB03
Other Accession	NP_689523.1
Host	Mouse
Clonality	Monoclonal
Target/Specificity	
ELOVL3	

Other Names

3-keto acyl-CoA synthase Elovl3 antibody, CIG30 antibody, Cold-inducible glycoprotein of 30 kDa antibody, Elongation of very long chain fatty acids protein 3 antibody, ELOV3_HUMAN antibody, Elovl3 antibody, MGC21435 antibody

Immunogen

Synthetic peptide of Human Elongation of very long chain fatty acids protein 3

Purification

Protein G Purified

Storage **-20°C**

Storage Buffer

PBS pH 7.4, 50% glycerol, 0.09% Sodium azide *Storage buffer may change when conjugated

Shipping Temperature

Blue Ice or 4°C

Certificate of Analysis

A 1:1000 dilution of SMC-555 was sufficient for detection of Elongation of very long chain fatty acids protein 3 in 10 µg of Rat Brain by ECL immunoblot analysis using goat anti-mouse IgG:HRP as the secondary antibody.

Cellular Localization

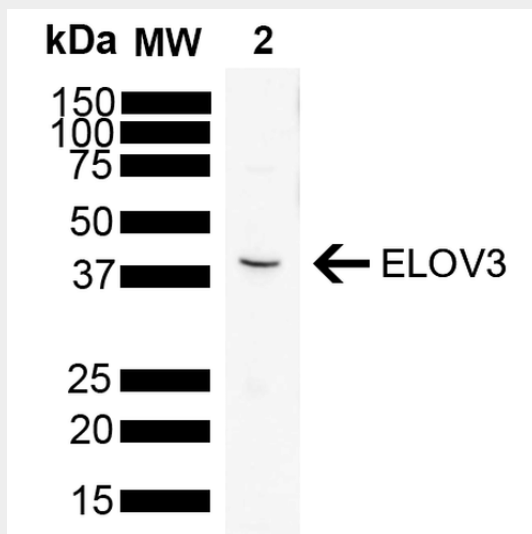
Endoplasmic reticulum

ELOVL3 Antibody - Protocols

Provided below are standard protocols that you may find useful for product applications.

- [Western Blot](#)
- [Blocking Peptides](#)
- [Dot Blot](#)
- [Immunohistochemistry](#)
- [Immunofluorescence](#)
- [Immunoprecipitation](#)
- [Flow Cytometry](#)
- [Cell Culture](#)

ELOVL3 Antibody - Images



Western Blot analysis of Rat brain showing detection of 31.5 kDa ELOVL3 protein using Mouse Anti-ELOVL3 Monoclonal Antibody, Clone V61P2B3-D10 (ASM10680). Load: 10 μ g. Block: 5% Skim Milk powder in TBST. Primary Antibody: Mouse Anti-ELOVL3 Monoclonal Antibody (ASM10680) at 1:1000 for 2 hours at RT with shaking. Secondary Antibody: Goat anti-mouse IgG:HRP at 1:5000 for 1 hour at RT with shaking. Color Development: Chemiluminescent for HRP (Moss) for 5 min in RT. Predicted/Observed Size: 31.5 kDa. Other Band(s): \sim 40 kDa, due to PTMs.

ELOVL3 Antibody - Background

ELOVL3 is a 30kDa membrane-bound protein expressed in the liver, skin and brown adipose tissues (1), that is induced by perinatal development, high fat diets or cold stress. It is an important regulator of endogenous synthesis of saturated very long chain fatty acids (2).

ELOVL3 Antibody - References

1. Anzulovich A., et al. (2006) J Lipid Res. 47(12): 2690-2700. 2. Westerberg R., et al. (2006) J Biol Chem. 281(8): 4958-4968.