

Tau Antibody (pSer202/ pThr205)
Tau Antibody (pSer202/ pThr205), Clone AH36
Catalog # ASM10690**Specification**

Tau Antibody (pSer202/ pThr205) - Product Information

Primary Accession	P10636
Host	Rabbit
Clonality	Monoclonal
Target/Specificity	
Tau (pSer202/ pThr205)	

Other Names

Tau Antibody, Neurofibrillary tangle protein Antibody, MAPTL Antibody, Microtubule-associated protein tau Antibody, MTBT1 Antibody, Paired helical filament-tau Antibody, TAU Antibody, PHF-tau Antibody, MAPT Antibody, A1413597 antibody, AW045860 antibody, DDPAC antibody, FLJ31424 antibody, FTDP 17 antibody, G protein beta1/gamma2 subunit interacting factor 1 antibody, MAPT antibody, MAPTL antibody, MGC134287 antibody, MGC138549 antibody, MGC156663 antibody, Microtubule associated protein tau antibody, Microtubule associated protein tau isoform 4 antibody, Microtubule-associated protein tau antibody, MSTD antibody, Mtapt antibody, MTBT1 antibody, MTBT2 antibody, Neurofibrillary tangle protein antibody, Paired helical filament tau antibody, Paired helical filament-tau antibody, PHF tau antibody, PHF-tau antibody, PPND antibody, PPP1R103 antibody, Protein phosphatase 1, regulatory subunit 103 antibody, pTau antibody, RNPTAU antibody, TAU antibody, TAU_HUMAN antibody, Tauopathy and respiratory failure, included antibody, AT8 antibody, phospho tau antibody

Immunogen

Synthetic peptide of Human Phospho Tau (Ser202/Thr205)

Purification

Affinity Purified

Storage	-20°C
---------	--------------

Storage Buffer

PBS pH 7.4, 50% glycerol, 0.09% Sodium azide *Storage buffer may change when conjugated

Shipping Temperature	Blue Ice or 4°C
----------------------	------------------------

Certificate of Analysis

A 1:500 dilution of SMC-601 was sufficient for detection of Tau in 10 µg Baculovirus by dot blot analysis using Goat Anti-Rabbit IgG:HRP as the secondary antibody.

Cellular Localization

Cytoskeleton | Cytosol | Plasma Membrane | Axon | Dendrite

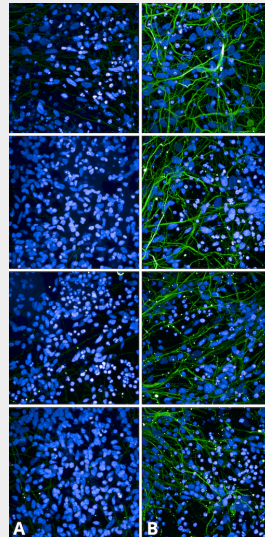
Tau Antibody (pSer202/ pThr205) - Protocols

Provided below are standard protocols that you may find useful for product applications.

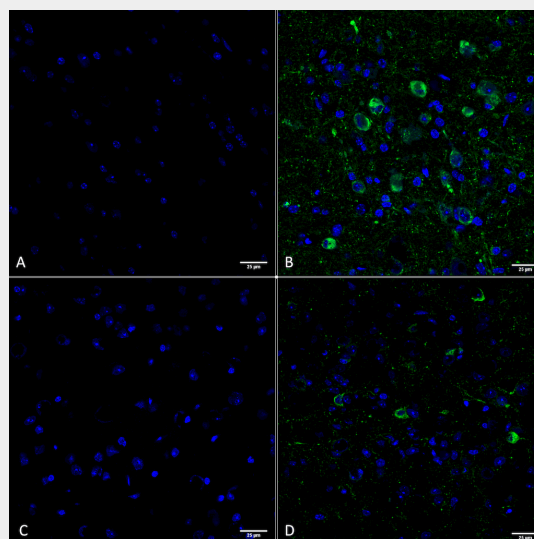
- [Western Blot](#)

- [Blocking Peptides](#)
- [Dot Blot](#)
- [Immunohistochemistry](#)
- [Immunofluorescence](#)
- [Immunoprecipitation](#)
- [Flow Cytometry](#)
- [Cell Culture](#)

Tau Antibody (pSer202/ pThr205) - Images

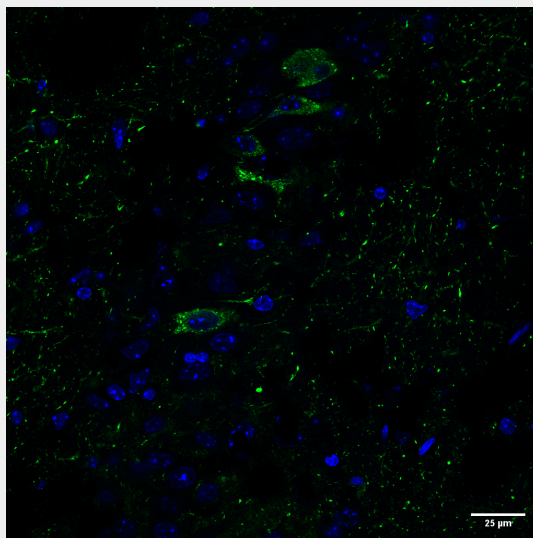


Immunocytochemistry/Immunofluorescence analysis using Rabbit Anti-Tau Monoclonal Antibody, Clone AH36 (ASM10690). Tissue: iPSC-derived cortical excitatory neurons. Species: Human. Primary Antibody: Rabbit Anti-Tau Monoclonal Antibody (ASM10690) at 1:500 for Overnight. Secondary Antibody: Donkey anti-rabbit: Alexa Fluor 488 at 1:1000. Counterstain: DAPI. A) iPSC-derived neurons from non-demented control (NDC). B) iPSC-derived neurons from subject with P301L MAPT mutation. Images acquired using an automated Opera Phoenix system. Each field of view is a max projection from 10 planes of 1 μ m stacks.. Courtesy of: Francesco Paonessa.

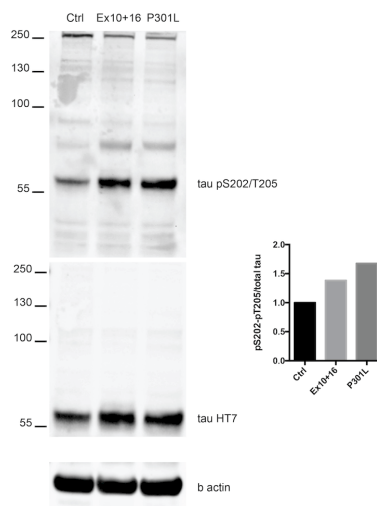


Immunohistochemistry analysis using Rabbit Anti-Tau Monoclonal Antibody, Clone AH36 (ASM10690). Tissue: Brain slice. Species: Mouse. Primary Antibody: Rabbit Anti-Tau Monoclonal Antibody (ASM10690) at 1:500 for Overnight at 4C. Secondary Antibody: Anti-Rabbit IgG:

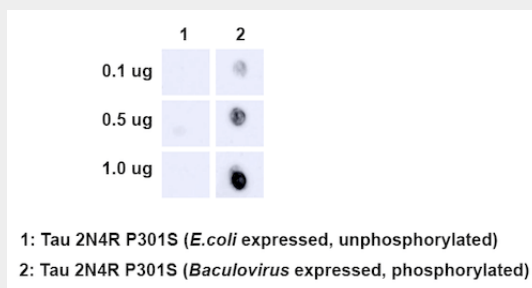
AlexaFluor 488. Counterstain: DAPI at 1:1000 for 5 min. (A) Pons of Non-Tg mouse. (B) Pons of P301SxUBQLN2 Tg mouse. (C) Prefrontal cortex of Non-Tg mouse. (D) Prefrontal cortex of P301SxUBQLN2 Tg mouse. IHC Protocol: 1. Post-fix brains in 4% PFA for 24 hours and put through a 10-30% sucrose gradient. 2. Section by cryostat at 10 μ m thickness. 3. Fix in MeOH 15 min. 4. 3x10 min wash in PBS 1X. 5. Heat via microwave in 10mM Citrate Buffer, pH 6 for 4 min at power level 20. 6. Cool in solution for 20 min. 7. Wash 2x5 min in PBS. 8. Permeabilize in 0.5% Triton-X 100 in PBS 10 min. 9. Wash in PBS 10 min. 10. Block for 1 hour in 5% goat serum. 11. Incubate primary Ab (ASM10690 at 1:500) in blocking solution overnight at 4C. 12. Wash 3x10 min in PBS. 13. Incubate in secondary Ab Rb IgG Alexa-fluor 488. 14. Wash 3x10 min in PBS. 15. Incubate in DAPI 1:1000 for 5 min. 16. Wash 3x5 min. 17. Coverslip with Prolong-Gold.. Courtesy of: Julia Gerson, University of Michigan.



Immunohistochemistry analysis using Rabbit Anti-Tau Monoclonal Antibody, Clone AH36 (ASM10690). Tissue: Brain slice. Species: Mouse. Primary Antibody: Rabbit Anti-Tau Monoclonal Antibody (ASM10690) at 1:500 for Overnight at 4C. Secondary Antibody: Anti-Rabbit IgG: AlexaFluor 488. Counterstain: DAPI at 1:1000 for 5 min. CA3 Region of P301SxUBQLN2 Tg mouse. IHC Protocol: 1. Post-fix brains in 4% PFA for 24 hours and put through a 10-30% sucrose gradient. 2. Section by cryostat at 10 μ m thickness. 3. Fix in MeOH 15 min. 4. 3x10 min wash in PBS 1X. 5. Heat via microwave in 10mM Citrate Buffer, pH 6 for 4 min at power level 20. 6. Cool in solution for 20 min. 7. Wash 2x5 min in PBS. 8. Permeabilize in 0.5% Triton-X 100 in PBS 10 min. 9. Wash in PBS 10 min. 10. Block for 1 hour in 5% goat serum. 11. Incubate primary Ab (ASM10690 at 1:500) in blocking solution overnight at 4C. 12. Wash 3x10 min in PBS. 13. Incubate in secondary Ab Rb IgG Alexa-fluor 488. 14. Wash 3x10 min in PBS. 15. Incubate in DAPI 1:1000 for 5 min. 16. Wash 3x5 min. 17. Coverslip with Prolong-Gold.. Courtesy of: Julia Gerson, University of Michigan.



Western Blot analysis of Human iPSC-derived cortical neurons showing detection of Tau protein using Rabbit Anti-Tau Monoclonal Antibody, Clone AH36 (ASM10690). Lane 1: MW ladder. Lane 2: Control (non-disease) line. Lane 3: Ex10+16 tau mutant sample. Lane 4: P301L tau mutant sample. Load: 50ug. Primary Antibody: Rabbit Anti-Tau Monoclonal Antibody (ASM10690) at 1:500 for Overnight. pSer202/pThr205 was detected using ASM10690. Total tau was detected using mouse anti-tau antibody (clone HT7). The bar graph on the right shows quantification of pSer202/pThr205 compared to total tau in each sample.. Courtesy of: Francesco Paonessa.



Dot Blot analysis using Rabbit Anti-Tau Monoclonal Antibody, Clone AH36 (ASM10690). Species: E. Coli, Baculovirus. Primary Antibody: Rabbit Anti-Tau Monoclonal Antibody (ASM10690) at 1:500. Secondary Antibody: Goat anti-rabbit IgG:HRP.

Tau Antibody (pSer202/ pThr205) - Background

Alzheimer's Disease (AD) is the most common neurodegenerative disease, affecting 10% of seniors over the age of 65 (1). It was named after Alois Alzheimer, a German scientist who discovered tangled bundles of fibrils where neurons had once been in the brain of a deceased patient in 1907 (2). Tau (tubulin-associated unit) is normally located in the axons of neurons where it stabilizes microtubules. Tauopathies such as AD are characterized by neurofibrillary tangles containing hyperphosphorylated tau fibrils (3). Phosphorylation at serine 202 and threonine 205 induces a turn-like structure and drives tau aggregation (4). SMC-601 recognizes the same epitope as the AT8 phospho tau antibody.

Tau Antibody (pSer202/ pThr205) - References

1. www.alz.org/alzheimers-dementia/facts-figures
2. Alzheimer, A. Über eine eigenartige Erkrankung der Hirnrinde. Allg. Z. Psychiatr. Psych.-Gerichtl. Med. 64, 146-148 (1907)
3. Matsumoto, G. et al. (2018). Int J Mol Sci. 19, 1497.
4. Depres, C. et al. (2017). PNAS 114(34):9080-9085.