

**RAB3D Antibody**  
**RAB3D Antibody, Clone 5E9**  
**Catalog # ASM10703****Specification**

---

**RAB3D Antibody - Product Information**

Primary Accession	<a href="#">O95716</a>
Other Accession	<a href="#">NP_004274</a>
Host	<b>Mouse</b>
Clonality	<b>Monoclonal</b>
<b>Target/Specificity</b>	
RAB3D	

**Other Names**

Member RAS Oncogene Family antibody, D2-2 antibody, GOV antibody, RAB16 antibody, RAD3D antibody, Ras-Related Protein Rab-3D antibody

**Immunogen**

Full length recombinant Human RAB3D protein

**Purification**

Protein G Purified

Storage	<b>-20°C</b>
---------	--------------

**Storage Buffer**

PBS pH 7.4, 50% glycerol, 0.09% Sodium azide \*Storage buffer may change when conjugated

Shipping Temperature	<b>Blue Ice or 4°C</b>
----------------------	------------------------

**Certificate of Analysis**

A 1:1000 dilution of SMC-614 was sufficient for detection of RAB3D in 10 µg of A549, T-47D cells, mouse and rat brain, kidney by ECL immunoblot analysis using Goat Anti-Mouse IgG:HRP as the secondary antibody.

**Cellular Localization**

Cell membrane, Membrane

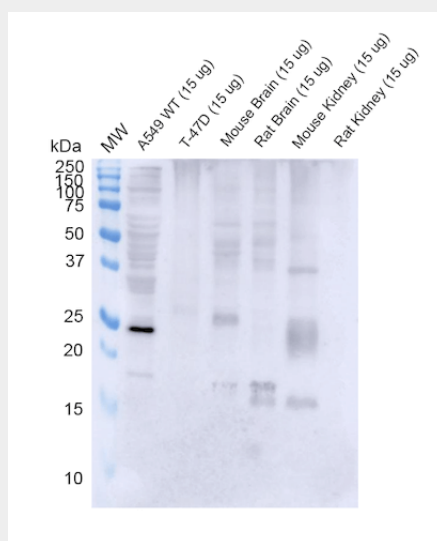
**RAB3D Antibody - Protocols**

Provided below are standard protocols that you may find useful for product applications.

- [Western Blot](#)
- [Blocking Peptides](#)
- [Dot Blot](#)
- [Immunohistochemistry](#)
- [Immunofluorescence](#)
- [Immunoprecipitation](#)
- [Flow Cytometry](#)
- [Cell Culture](#)

**RAB3D Antibody - Images**

---



Western Blot analysis of Human, Mouse, Rat A549, T-47D cells, mouse and rat brain, kidney showing detection of RAB3D protein using Mouse Anti-RAB3D Monoclonal Antibody, Clone 5E9 (ASM10703). Lane 1: MW ladder. Lane 2: WT A549 cells. Lane 3: T-47D cells. Lane 4: mouse brain. Lane 5: rat brain. Lane 6: mouse kidney. Lane 7: rat kidney.. Load: 15 ug. Block: 5% Skim Milk Powder in TBST. Primary Antibody: Mouse Anti-RAB3D Monoclonal Antibody (ASM10703) at 1:1000 for 2 hours at RT with shaking. Secondary Antibody: Goat anti-mouse IgG:HRP at 1:4000 for 1 hour at RT with shaking. Color Development: Chemiluminescent for HRP (Moss) for 5 min in RT.

### **RAB3D Antibody - Background**

Rab3D is a small exocytic GTPase involved in protein transport. It is required for efficient bone resorption by osteoclasts (1) and associates with a subset of the trans-golgi network (2).

### **RAB3D Antibody - References**

1. Zhu, S. et al. (2016) Sci Rep. 6:37963
2. Pavlos, N. J. et al. (2005) Mol Cell Biol. 25(12): 5253-5269