

Tau Antibody (pThr217)
Tau Antibody (pThr217), Clone 15B7
Catalog # ASM10704**Specification**

Tau Antibody (pThr217) - Product Information

Primary Accession	P10636
Other Accession	NP_058519.3
Host	Mouse
Clonality	Monoclonal
Target/Specificity	
Tau (pThr217)	

Other Names

Microtubule associated protein tau | phospho tau

Immunogen

Synthetic peptide of Wild-type Human Tau (pThr217) AA 210-224: SRTPSLP-pT-PPTREPK

Purification

Protein G Purified

Storage	-20°C
---------	--------------

Storage Buffer

PBS pH 7.4, 50% glycerol, 0.09% Sodium azide *Storage buffer may change when conjugated

Shipping Temperature	Blue Ice or 4°C
----------------------	------------------------

Certificate of Analysis

A 1:1000 dilution of SMC-615 was sufficient for detection of Tau in 10 µg of Human, Mouse, Rat Tau Peptide (pThr217) by DB analysis using Goat Anti-Mouse IgG:HRP as the secondary antibody.

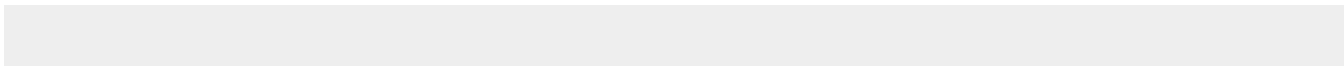
Cellular Localization

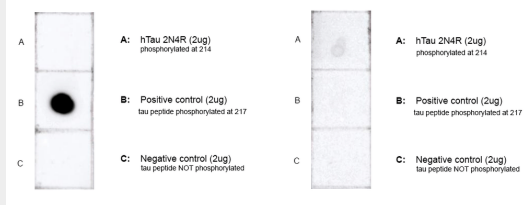
Intracellular | Secreted

Tau Antibody (pThr217) - Protocols

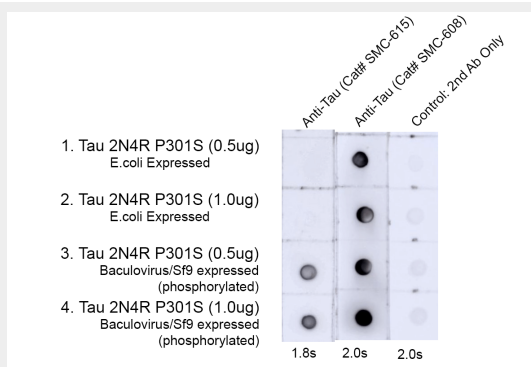
Provided below are standard protocols that you may find useful for product applications.

- [Western Blot](#)
- [Blocking Peptides](#)
- [Dot Blot](#)
- [Immunohistochemistry](#)
- [Immunofluorescence](#)
- [Immunoprecipitation](#)
- [Flow Cytometry](#)
- [Cell Culture](#)

Tau Antibody (pThr217) - Images



Dot Blot analysis of Human, Mouse, Rat Tau Peptide (pThr217) showing detection of Tau protein using Mouse Anti-Tau Monoclonal Antibody, Clone 15B7 (ASM10704). Panel A: hTau 2N4R monomer (pSer214) (2 ug). Panel B: Tau peptide (pThr217) (2 ug). Panel C: Tau peptide (non phospho) (2 ug). Load: 2ug. Block: 5% Skim Milk in 1X TBST. Primary Antibody: Mouse Anti-Tau Monoclonal Antibody (ASM10704) at 1:1000 for 1 hour at RT with shaking. Secondary Antibody: Goat anti-mouse IgG:H&L at 1:4000 for 1/2 hour at RT with shaking. Color Development: Chemiluminescent for HRP (Moss) for 5 min in RT. Phospho peptide sequence: SRTPSLP-pT-PPTREPK. Non-phospho peptide sequence: SRTPSLPTPPTREPK. This sequence is the same for human, mouse, and rat.



Dot Blot analysis of Human, Mouse, Rat Tau 2N4R P301S (phospho & non-phospho) showing detection of Tau protein using Mouse Anti-Tau Monoclonal Antibody, Clone 15B7 (ASM10704). Lane 1: hTau 2N4R P301S Monomer(0.5ug). Lane 2: hTau 2N4R P301S Monomer(1.0ug). Lane 3: Recombinant hTau-441 (2N4R) P301S Monomer, Baculovirus/Sf9 Expressed (phosphorylated)(0.5ug). Lane 4: Recombinant hTau-441 (2N4R) P301S Monomer, Baculovirus/Sf9 Expressed (phosphorylated)(1.0ug). Load: 0.5ug, 1.0ug. Block: 5% BSA in TBST. Primary Antibody: Mouse Anti-Tau Monoclonal Antibody (ASM10704) at 1:4 for Overnight, 4C, with shaking. Secondary Antibody: Goat anti-mouse IgG:HRP at 1:4000 for 1 hour at RT with shaking. Color Development: Chemiluminescent for HRP (Moss) for 5 min in RT. Dot Blot performed with supernatants.

Tau Antibody (pThr217) - Background

This gene encodes the microtubule-associated protein tau (MAPT) whose transcript undergoes complex, regulated alternative splicing, giving rise to several mRNA species. MAPT transcripts are differentially expressed in the nervous system, depending on stage of neuronal maturation and neuron type.