

**PPM1H Antibody**  
**PPM1H Antibody, Clone 10D2**  
**Catalog # ASM10705****Specification**

---

**PPM1H Antibody - Product Information**

Primary Accession	<a href="#">O9ULR3</a>
Other Accession	<a href="#">NP_065751.1</a>
Host	<b>Mouse</b>
Clonality	<b>Monoclonal</b>
<b>Target/Specificity</b>	
PPM1H	

**Other Names**

Protein phosphatase Mg2+/Mn2+ dependent 1H Antibody | NERPP2C | Protein phosphatase 1H Antibody

**Immunogen**

Recombinant Human PPM1H Protein

**Purification**

Protein G Purified

Storage	<b>-20°C</b>
---------	--------------

**Storage Buffer**

PBS pH 7.4, 50% glycerol, 0.09% sodium azide \*Storage buffer may change when conjugated

Shipping Temperature	<b>Blue Ice or 4°C</b>
----------------------	------------------------

**Certificate of Analysis**

A 1:1000 dilution of SMC-616 was sufficient for detection of PPM1H in 10 µg of Hu, Ms, Rt Kidney Cells (HEK293), Alveolar Basal Epithelial cells (A549) by ECL immunoblot analysis using Goat Anti-Mouse IgG:HRP as the secondary antibody.

**Cellular Localization**

Intracellular

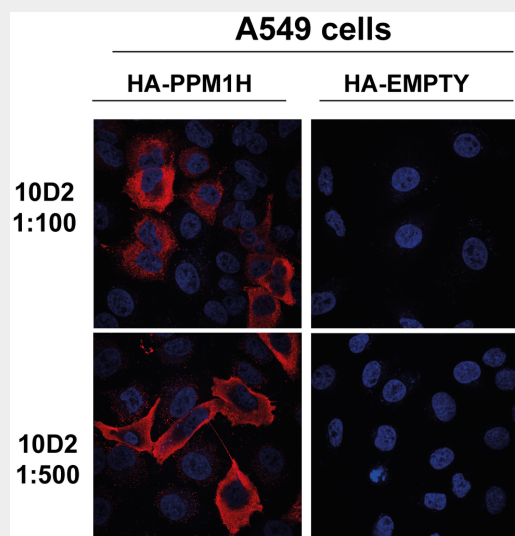
**PPM1H Antibody - Protocols**

Provided below are standard protocols that you may find useful for product applications.

- [Western Blot](#)
- [Blocking Peptides](#)
- [Dot Blot](#)
- [Immunohistochemistry](#)
- [Immunofluorescence](#)
- [Immunoprecipitation](#)
- [Flow Cytometry](#)
- [Cell Culture](#)

**PPM1H Antibody - Images**

---



Immunocytochemistry/Immunofluorescence analysis using Mouse Anti-PPM1H Monoclonal Antibody, Clone 10D2 (ASM10705). Tissue: Alveolar Basal Epithelial cells (A549). Species: Hu, Ms, Rt. Primary Antibody: Mouse Anti-PPM1H Monoclonal Antibody (ASM10705) at 1:1000 for 1 hour at RT. Secondary Antibody: Alexa Fluor 594 Donkey anti mouse secondary diluted in 0.2% BSA + 0.02% sodium azide in PBS at 1:1000 for 1 hour at RT. Counterstain: Cells mounted and co-stained with DAPI using ProLong Gold antifade reagent with DAPI (Invitrogen). Localization: Intracellular, Nucleoplasm. Magnification: 63x. Courtesy of: Dario Alessi Lab, University of Dundee.

### PPM1H Antibody - Background

PPM1H is an independent prognostic biomarker of non-small cell lung cancer (1). PPM1H acts as a key modulator of LRRK2 signaling by controlling dephosphorylation of Rab proteins (2). PPM1H is also suggested to be a gatekeeper to prevent excessive bone morphogenetic protein (BMP) signalling through dephosphorylation (3).

### PPM1H Antibody - References

1. Zhang W.Q., et al. (2021) Neoplasma. 68(5): 917-923.
2. Berndsen K., et al. (2019) 8:e50416.
3. Shen T., et al. (2014) Cell Res. 24(6): 727-741.