

GDNF Antibody
Rabbit Anti-Human GDNF Polyclonal
Catalog # ASM10706**Specification**

GDNF Antibody - Product Information

Application	WB
Primary Accession	P39905
Host	Rabbit
Reactivity	Human, Mouse, Rat
Clonality	Polyclonal
Description	
Rabbit Anti-Human GDNF Polyclonal	

Target/Specificity
GDNF**Other Names**

Glial cell line-derived neurotrophic factor Antibody, Astrocyte-derived trophic factor Antibody, Astrocyte derived trophic factor 1 Antibody, Glial cell derived neurotrophic factor Antibody, ATF 1 Antibody, ATF 2 Antibody, Glial Cell Line Derived Neurotrophic Factor Antibody, ATF Antibody, Atf Antibody, HSCR3 Antibody, Astrocyte derived trophic factor Antibody, ATF2 Antibody, GDNF_HUMAN Antibody, GDNF Antibody, Glial derived neurotrophic factor Antibody, ATF1 Antibody, gdnf Antibody, HFB1 GDNF Antibody, hGDNF Antibody

Immunogen

Recombinant Human GDNF Protein, Full length (AA78-211)

Purification

Protein A Purified

Storage **-20°C**

Storage Buffer

PBS pH 7.4, 50% glycerol, 0.09% sodium azide *Storage buffer may change when conjugated

Shipping Temperature

Blue Ice or 4°C

Certificate of Analysis

1 µg/mL of ASM10706 was sufficient for detection of GDNF in 15 µg of rat brain tissue lysate by colorimetric immunoblot analysis using goat anti-rabbit IgG:HRP as the secondary antibody.

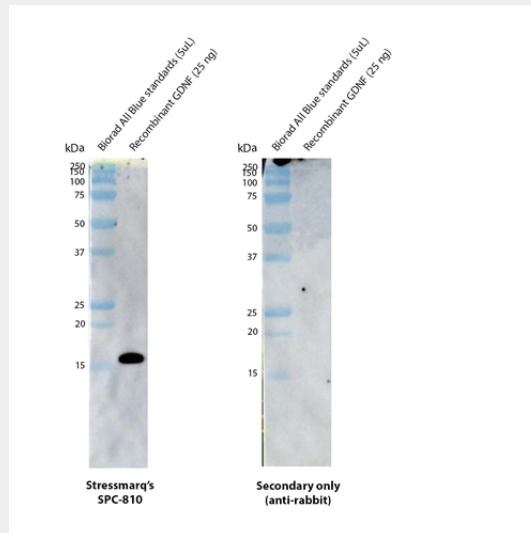
GDNF Antibody - Protocols

Provided below are standard protocols that you may find useful for product applications.

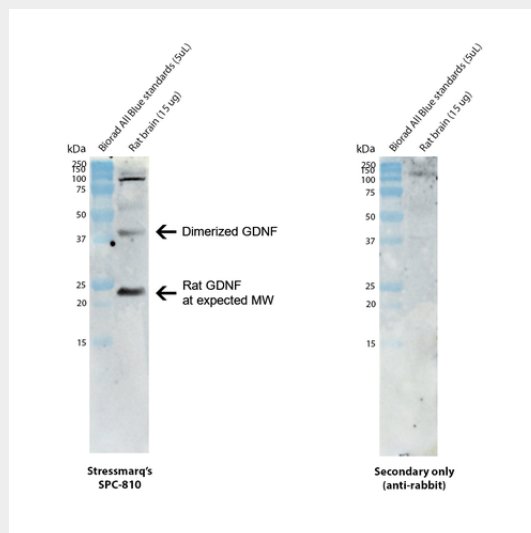
- [Western Blot](#)
- [Blocking Peptides](#)
- [Dot Blot](#)
- [Immunohistochemistry](#)
- [Immunofluorescence](#)

- [Immunoprecipitation](#)
- [Flow Cytometry](#)
- [Cell Culture](#)

GDNF Antibody - Images



Western blot analysis with Stressmarq's anti-GDNF polyclonal antibody (ASM10706) showing detection of human recombinant GDNF protein (SinoBiological 10561-HNAE). This recombinant protein has a predicted molecular weight of 15.2 kDa. Block: 5% skim milk. Primary Antibody: Rabbit Anti-GDNF Polyclonal Antibody (ASM10706) at 1:5000 for 2 hours at RT. Secondary Antibody: Goat anti-rabbit IgG:HRP at 1:5000 for 1 hour at RT. Color Development: Chemiluminescent for HRP (Moss) for 3 min in RT. Exposed 9.122 seconds.



Western blot analysis with Stressmarq's anti-GDNF polyclonal antibody (ASM10706) showing detection of GDNF protein in rat brain lysate (prepared in-house). Rat GDNF protein with signal and pro-peptide segments has a predicted molecular weight of 23.6 kDa (UniProt Q07731). Block: 5% skim milk. Primary Antibody: Rabbit Anti-GDNF Polyclonal Antibody (ASM10706) at 1:1000 for 2 hours at RT. Secondary Antibody: Goat anti-rabbit IgG:HRP at 1:5000 for 1 hour at RT. Color Development: Chemiluminescent for HRP (Moss) for 3 min in RT. Exposed 7.299 seconds. NOTE secondary antibody shows some non-specific binding in the control, but not to the GDNF protein.