

**Erk1/2 Antibody**  
**Rabbit Anti-Rat Erk1/2 Polyclonal**  
**Catalog # ASM10707****Specification**

---

**Erk1/2 Antibody - Product Information**

Application	WB, IHC
Primary Accession	<a href="#">P21708</a>
Host	Rabbit
Reactivity	Human, Mouse, Rat, Chicken, Bovine, Drosophila, Xenopus, Sheep
Clonality	Polyclonal
<b>Description</b>	
Rabbit Anti-Rat Erk1/2 Polyclonal	

**Target/Specificity**  
ERK1**Other Names**

ERK1 Antibody, ERK2 Antibody, ERT1 Antibody, ERT2 Antibody, MAP kinase1 Antibody, MAP kinase2 Antibody, MAPK1 Antibody, MAPK2 Antibody, MAPK3 Antibody, p38 Antibody, p40 Antibody, p41 Antibody, p41mapk Antibody, p42 MAPK Antibody, p44 ERK1 Antibody, p44 MAPK Antibody, PRKM1 PRKM2 Antibody, PRKM3 Antibody

**Immunogen**

A 35 residue synthetic peptide, corresponding to Rat Erk1 MAP kinase with the CGG spacer group added and the peptide coupled to KLH.

**Purification**

Peptide Affinity Purified

Storage	<b>1 mg/ml</b>
---------	----------------

**Storage Buffer**

PBS pH7.4, 50% glycerol, 0.09% sodium azide \*Storage buffer may change when conjugated

Shipping Temperature	<b>-20°C</b>
----------------------	--------------

**Certificate of Analysis**

Blue Ice or 4°C

**Cellular Localization**

A 1:1000 dilution of ASM10707 was sufficient for detection of ERK1/2 in 20 µg of HeLa cell lysate by ECL immunoblot analysis.

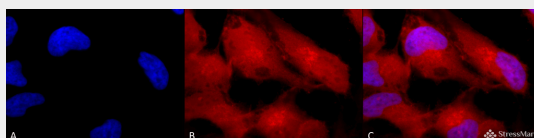
**Erk1/2 Antibody - Protocols**

Provided below are standard protocols that you may find useful for product applications.

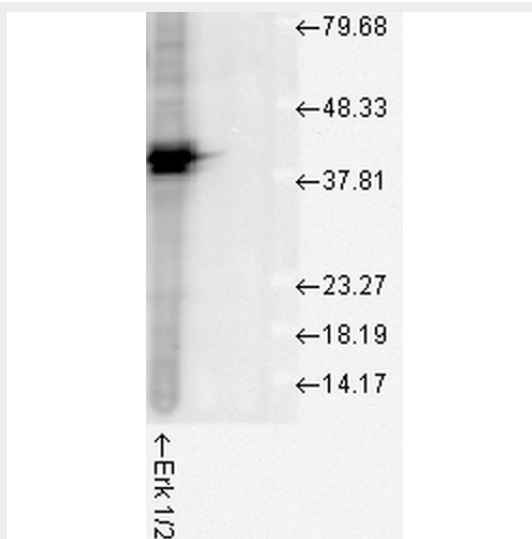
- [Western Blot](#)
- [Blocking Peptides](#)

- [Dot Blot](#)
- [Immunohistochemistry](#)
- [Immunofluorescence](#)
- [Immunoprecipitation](#)
- [Flow Cytometry](#)
- [Cell Culture](#)

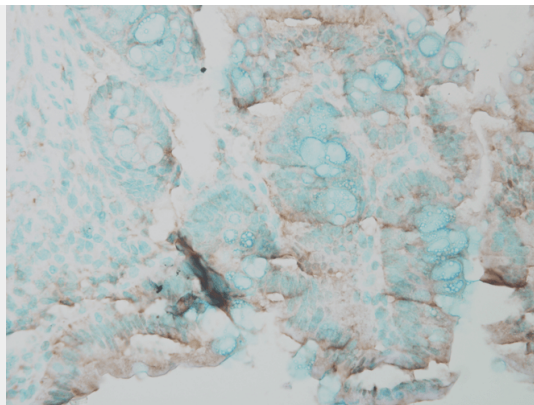
## Erk1/2 Antibody - Images



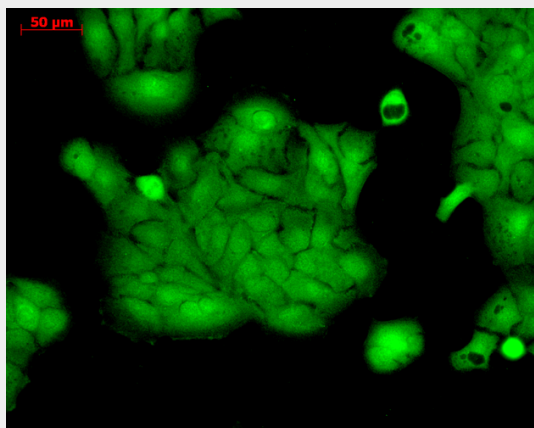
Immunocytochemistry/Immunofluorescence analysis using Rabbit Anti-Erk1/2 Polyclonal Antibody (ASM10707). Tissue: Cervical cancer cell line (HeLa). Species: Human. Fixation: 2% Formaldehyde for 20 min at RT. Primary Antibody: Rabbit Anti-Erk1/2 Polyclonal Antibody (ASM10707) at 1:100 for 12 hours at 4°C. Secondary Antibody: APC Goat Anti-Rabbit (red) at 1:200 for 2 hours at RT. Counterstain: DAPI (blue) nuclear stain at 1:40000 for 2 hours at RT. Localization: Cytoplasm. Nucleus. Magnification: 100x. (A) DAPI (blue) nuclear stain. (B) Anti-Erk1/2 Antibody. (C) Composite.



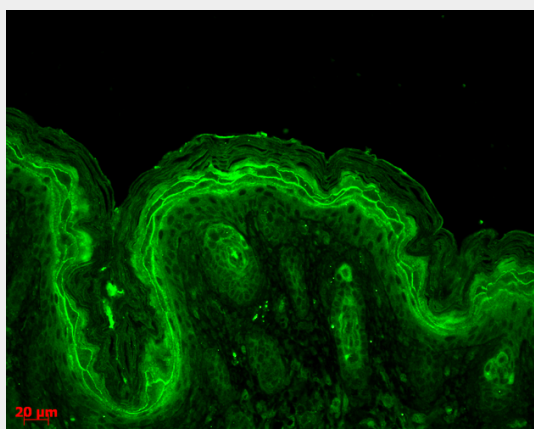
Western blot analysis of Human Cell line lysates showing detection of ERK1 protein using Rabbit Anti-ERK1 Polyclonal Antibody (ASM10707). Load: 15 µgprotein. Block: 1.5% BSA for 30 minutes at RT. Primary Antibody: Rabbit Anti-ERK1 Polyclonal Antibody (ASM10707) at 1:1000 for 2 hours at RT. Secondary Antibody: Donkey Anti-Rabbit IgG: HRP for 1 hour at RT.



Immunohistochemistry analysis using Rabbit Anti-ERK1 Polyclonal Antibody (ASM10707). Tissue: Inflamed colon. Species: Mouse. Fixation: Formalin. Primary Antibody: Rabbit Anti-ERK1 Polyclonal Antibody (ASM10707) at 1:25000 for 12 hours at 4°C. Secondary Antibody: Biotin Goat Anti-Rabbit at 1:2000 for 1 hour at RT. Counterstain: Methyl Green at 200uL for 2 min at RT. This image was produced using an amplifying IHC wash buffer. The antibody has therefore been diluted more than is recommended for other applications..

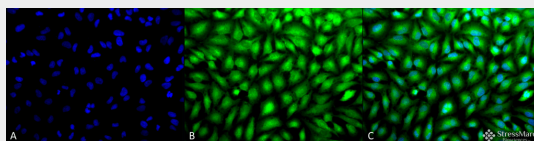


Immunocytochemistry/Immunofluorescence analysis using Rabbit Anti-ERK1 Polyclonal Antibody (ASM10707). Tissue: HaCaT cells. Species: Human. Fixation: Cold 100% methanol at -20C for 10 minutes. Primary Antibody: Rabbit Anti-ERK1 Polyclonal Antibody (ASM10707) at 1:100 for 12 hours at 4°C. Secondary Antibody: FITC Goat Anti-Rabbit at 1:50 for 1-2 hours at RT in dark. Localization: Cytoplasm. Nucleus.



Immunohistochemistry analysis using Rabbit Anti-ERK1 Polyclonal Antibody (ASM10707). Tissue: backskin. Species: Mouse. Fixation: Bouin's Fixative Solution. Primary Antibody: Rabbit Anti-ERK1 Polyclonal Antibody (ASM10707) at 1:100 for 1 hour at RT. Secondary Antibody: FITC Goat

Anti-Rabbit (green) at 1:50 for 1 hour at RT. Localization: Cytoplasm.



Immunocytochemistry/Immunofluorescence analysis using Rabbit Anti-Erk1/2 Polyclonal Antibody (ASM10707). Tissue: Cervical cancer cell line (HeLa). Species: Human. Fixation: 2% Formaldehyde for 20 min at RT. Primary Antibody: Rabbit Anti-Erk1/2 Polyclonal Antibody (ASM10707) at 1:100 for 12 hours at 4°C. Secondary Antibody: FITC Goat Anti-Rabbit (green) at 1:200 for 2 hours at RT. Counterstain: DAPI (blue) nuclear stain at 1:40000 for 2 hours at RT. Localization: Cytoplasm. Nucleus. Magnification: 20x. (A) DAPI (blue) nuclear stain. (B) Anti-Erk1/2 Antibody. (C) Composite.