

Anti-Chicken IgG (H&L) (Fluorescein Conjugated) Secondary Antibody
Polyclonal, Fluorescein (FITC)
Catalog # ASR1084**Specification****Anti-Chicken IgG (H&L) (Fluorescein Conjugated) Secondary Antibody - Product Information**

Description	Anti-CHICKEN IgG (H&L) (RABBIT) Antibody
Conjugate	Fluorescein Conjugated
FP Value	Fluorescein (FITC) 3.0 moles Fluorescein (FITC) per mole of IgG
Target Species	Chicken
Clonality	Polyclonal
Application	,3,4,
Application Note	FLISA 1:10,000-1:50,000;IF Microscopy 1:1,000-1:5,000;FlowCytometry 1:500-1:2,500
Physical State	Lyophilized
Host Isotype	IgG
Target Isotype	IgG (H&L)
Buffer	0.02 M Potassium Phosphate, 0.15 M Sodium Chloride, pH 7.2
Immunogen	Chicken IgG whole molecule
Reconstitution Volume	500 µL
Reconstitution Buffer	Restore with deionized water (or equivalent)
Stabilizer	10 mg/mL Bovine Serum Albumin (BSA) - Immunoglobulin and Protease free
Preservative	0.01% (w/v) Sodium Azide

Anti-Chicken IgG (H&L) (Fluorescein Conjugated) Secondary Antibody - Additional Information**Shipping Condition**

Ambient

Purity

This product was prepared from monospecific antiserum by immunoaffinity chromatography using Chicken IgG coupled to agarose beads. Assay by immunoelectrophoresis resulted in a single precipitin arc against anti-Rabbit Serum and Chicken IgG. Some light chain cross reactivity may be observed against chicken immunoglobulins.

Storage Condition

Store vial at 4° C prior to restoration. For extended storage aliquot contents and freeze at -20° C or below. Avoid cycles of freezing and thawing. Centrifuge product if not completely clear after standing at room temperature. This product is stable for several weeks at 4° C as an undiluted liquid. Dilute only prior to immediate use.

Precautions Note

This product is for research use only and is not intended for therapeutic or diagnostic applications.

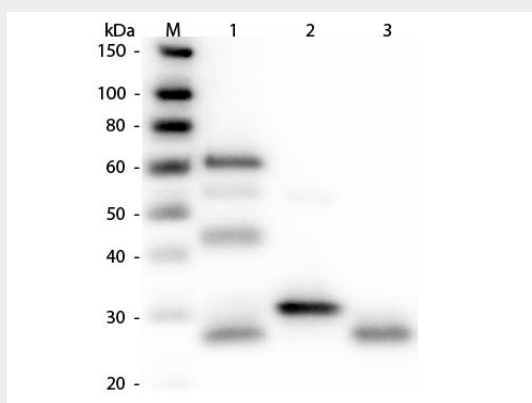
Anti-Chicken IgG (H&L) (Fluorescein Conjugated) Secondary Antibody - Protein Information

Anti-Chicken IgG (H&L) (Fluorescein Conjugated) Secondary Antibody - Protocols

Provided below are standard protocols that you may find useful for product applications.

- [Western Blot](#)
- [Blocking Peptides](#)
- [Dot Blot](#)
- [Immunohistochemistry](#)
- [Immunofluorescence](#)
- [Immunoprecipitation](#)
- [Flow Cytometry](#)
- [Cell Culture](#)

Anti-Chicken IgG (H&L) (Fluorescein Conjugated) Secondary Antibody - Images



Western Blot of Anti-Chicken IgG (H&L) (RABBIT) Antibody . Lane M: 3 μ l Molecular Ladder. Lane 1: Chicken IgG whole molecule . Lane 2: Chicken IgG F(c) Fragment . Lane 3: Chicken IgG F(ab) Fragment . All samples were reduced. Load: 50 ng per lane. Block: MB-070 for 30 min at RT. Primary Antibody: Anti-Chicken IgG (H&L) (RABBIT) Antibody 1:3,000 for 60 min at RT. Secondary antibody: Anti-Rabbit IgG (GOAT) Peroxidase Conjugated Antibody 1:40,000 in MB-070 for 30 min at RT. Predicted/Observed Size: 25 and 72 kDa for Chicken IgG, 25 kDa for F(c) and F(ab). Chicken F(c) migrates slightly higher.

Anti-Chicken IgG (H&L) (Fluorescein Conjugated) Secondary Antibody - Background

Anti-Chicken IgG/IgY FITC conjugated secondary antibody is ideal for FLOW Cytometry and Immunofluorescence Microscopy.