

**Anti-RABBIT IgG (H&L) Secondary Antibody**  
**Goat Polyclonal, Unconjugated**  
**Catalog # ASR1087****Specification****Anti-RABBIT IgG (H&L) Secondary Antibody - Product Information**

Description	<b>Anti-RABBIT IgG (H&amp;L) (GOAT) Antibody</b>
Host	<b>Goat</b>
Conjugate	<b>Unconjugated</b>
Target Species	<b>Rabbit</b>
Reactivity	<b>Rabbit</b>
Clonality	<b>Polyclonal</b>
Application	<b>WB, IF, IP, E, IC</b>
Application Note	<b>ELISA 1:10,000-1:60,000;IF Microscopy Yes;Western Blot 1:1,000-1:5,000;Immunochemistry 1:500-1:2,500ImmunoPrecipitation:Yes Liquid (sterile filtered)</b>
Physical State	<b>IgG</b>
Host Isotype	<b>IgG (H&amp;L)</b>
Target Isotype	<b>0.02 M Potassium Phosphate, 0.15 M Sodium Chloride, pH 7.2</b>
Buffer	<b>Anti-Rabbit IgG (H&amp;L) was produced by repeated immunization with rabbit whole IgG molecule in goat.</b>
Immunogen	<b>0.01% (w/v) Sodium Azide</b>
Preservative	

**Anti-RABBIT IgG (H&L) Secondary Antibody - Additional Information****Shipping Condition**

Wet Ice

**Purity**

Rabbit Secondary Antibody was prepared from monospecific antiserum by immunoaffinity chromatography using Rabbit IgG coupled to agarose beads. Assay by immunoelectrophoresis resulted in a single precipitin arc against anti-Goat Serum, Rabbit IgG and Rabbit Serum.

**Storage Condition**

Store Rabbit Secondary Antibody at 4° C prior to opening. This product is stable for several weeks at 4° C as an undiluted liquid. Dilute only prior to immediate use. For extended storage aliquot contents and freeze at -20° C or below. Avoid cycles of freezing and thawing.

**Precautions Note**

This product is for research use only and is not intended for therapeutic or diagnostic applications.

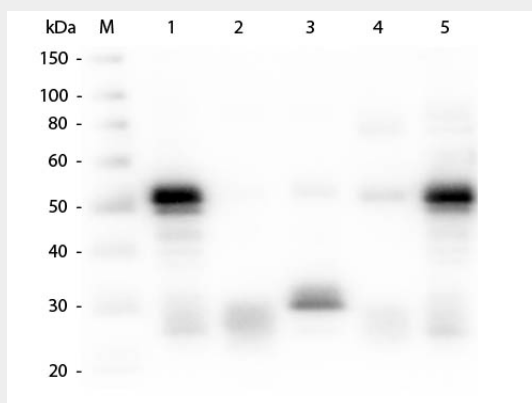
**Anti-RABBIT IgG (H&L) Secondary Antibody - Protein Information**

## Anti-RABBIT IgG (H&L) Secondary Antibody - Protocols

Provided below are standard protocols that you may find useful for product applications.

- [Western Blot](#)
- [Blocking Peptides](#)
- [Dot Blot](#)
- [Immunohistochemistry](#)
- [Immunofluorescence](#)
- [Immunoprecipitation](#)
- [Flow Cytometry](#)
- [Cell Culture](#)

## Anti-RABBIT IgG (H&L) Secondary Antibody - Images



Western Blot of Anti-Rabbit IgG (H&L) (GOAT) Antibody . Lane M: 3  $\mu$ l Molecular Ladder. Lane 1: Rabbit IgG whole molecule . Lane 2: Rabbit IgG F(ab) Fragment . Lane 3: Rabbit IgG F(c) Fragment . Lane 4: Rabbit IgM Whole Molecule . Lane 5: Normal Rabbit Serum . All samples were reduced. Load: 50 ng per lane. Block: MB-070 for 30 min at RT. Primary Antibody: Anti-Rabbit IgG (H&L) (GOAT) Antibody 1:1,000 for 60 min at RT. Secondary antibody: Anti-Goat IgG (DONKEY) Peroxidase Conjugated Antibody 1:40,000 in MB-070 for 30 min at RT. Predicted/Observed Size: 25 and 50 kDa for Rabbit IgG and Serum, 25 kDa for F(c) and F(ab), 70 and 23 kDa for IgM. Rabbit F(c) migrates slightly higher.

## Anti-RABBIT IgG (H&L) Secondary Antibody - Background

Anti-Rabbit IgG (H&L) secondary antibody generated in goat detects specifically rabbit IgG. This secondary antibody anti-Rabbit is ideal for investigators who routinely perform ELISA, Sandwich ELISA, titration assays, western-blot, immunoprecipitation and more generally immunoassays.