

Human Transferrin Fluorescein
Catalog # ASR1102**Specification**

Human Transferrin Fluorescein - Product Information

Description	HUMAN TRANSFERRIN Fluorescein conjugated
Conjugate	Fluorescein (FITC)
FP Value	1.68 moles Fluorescein (FITC) per mole of Human Transferrin
Physical State	Lyophilized
Host Isotype	Transferrin
Buffer	0.02 M Potassium Phosphate, 0.15 M Sodium Chloride, pH 7.2
Species of Origin	Human
Reconstitution Volume	1.0 mL
Reconstitution Buffer	Restore with deionized water (or equivalent)
Stabilizer	10 mg/mL Bovine Serum Albumin (BSA) - Immunoglobulin and Protease free
Preservative	0.01% (w/v) Sodium Azide

Human Transferrin Fluorescein - Additional Information**Shipping Condition**

Ambient

Purity

This product was prepared from normal serum by delipidation, selective precipitation and tandem molecular sieve chromatography followed by extensive dialysis against the buffer stated above. Assay by immunoelectrophoresis resulted in a single precipitin arc against anti-Fluorescein, anti-Human Transferrin and anti-Human Serum.

Storage Condition

Store vial at 4° C prior to restoration. For extended storage aliquot contents and freeze at -20° C or below. Avoid cycles of freezing and thawing. Centrifuge product if not completely clear after standing at room temperature. This product is stable for several weeks at 4° C as an undiluted liquid. Dilute only prior to immediate use.

Precautions Note

This product is for research use only and is not intended for therapeutic or diagnostic applications.

Human Transferrin Fluorescein - Protein Information**Human Transferrin Fluorescein - Protocols**

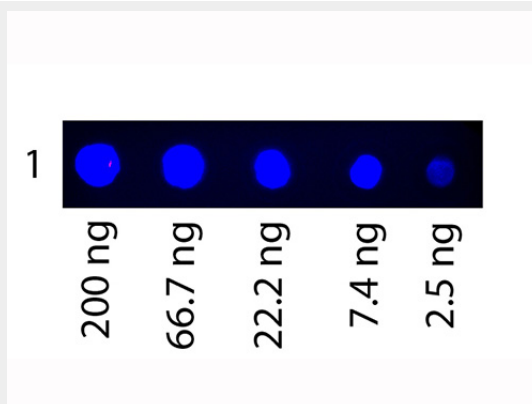
Provided below are standard protocols that you may find useful for product applications.

- [Western Blot](#)
- [Blocking Peptides](#)
- [Dot Blot](#)
- [Immunohistochemistry](#)
- [Immunofluorescence](#)
- [Immunoprecipitation](#)
- [Flow Cytometry](#)
- [Cell Culture](#)

Human Transferrin Fluorescein - Images



Dot Blot of Fluorescein conjugated Human Transferrin Antigen: Human Transferrin Fluorescein
Load: 3-fold serial dilution starting at 200 ng Block: MB-070 for 30 min at RT



Dot Blot of Fluorescein conjugated Human Transferrin. Antigen: Human Transferrin Fluorescein.
Load: 3-fold serial dilution starting at 200 ng. Block: None.

Human Transferrin Fluorescein - Background

This product is designed for immunofluorescence microscopy, fluorescence based plate assays (FLISA) and fluorescent western blotting. This product is also suitable for multiplex analysis, including multicolor imaging, utilizing various commercial platforms.