

Anti-MOUSE IgG (H&L) Secondary Antibody
Goat Polyclonal, Unconjugated
Catalog # ASR1149**Specification****Anti-MOUSE IgG (H&L) Secondary Antibody - Product Information**

Description	Anti-MOUSE IgG (H&L) (GOAT) Antibody
Host	Goat
Conjugate	Unconjugated
Target Species	Mouse
Reactivity	Mouse
Clonality	Polyclonal
Application	WB, IF, FC, IP, E, IC
Application Note	ELISA 1:150,000;FLISA Yes;IF Microscopy Yes;FlowCytometry Yes;Western Blot 1:3,000-1:15,000;Immunochemistry 1:1,000-1:5,000Immunoprecipitation:Yes Liquid (sterile filtered)
Physical State	IgG
Host Isotype	IgG (H&L)
Target Isotype	0.02 M Potassium Phosphate, 0.15 M Sodium Chloride, pH 7.2
Buffer	Anti-Mouse IgG whole molecule was produced by repeated immunization with Mouse IgG whole molecule in goat.
Immunogen	None
Stabilizer	0.01% (w/v) Sodium Azide
Preservative	

Anti-MOUSE IgG (H&L) Secondary Antibody - Additional Information**Shipping Condition**

Wet Ice

Purity

Secondary Antibody Anti-Mouse IgG (H&L) was prepared from monospecific antiserum by immunoaffinity chromatography using Mouse IgG coupled to agarose. Assay by immunoelectrophoresis resulted in a single precipitin arc against anti-Goat Serum, Mouse IgG and Mouse Serum.

Storage Condition

Store Anti-Mouse Secondary Antibody at 4° C prior to opening. This product is stable for several weeks at 4° C as an undiluted liquid. Dilute only prior to immediate use. For extended storage aliquot contents and freeze at -20° C or below. Avoid cycles of freezing and thawing.

Precautions Note

This product is for research use only and is not intended for therapeutic or diagnostic applications.

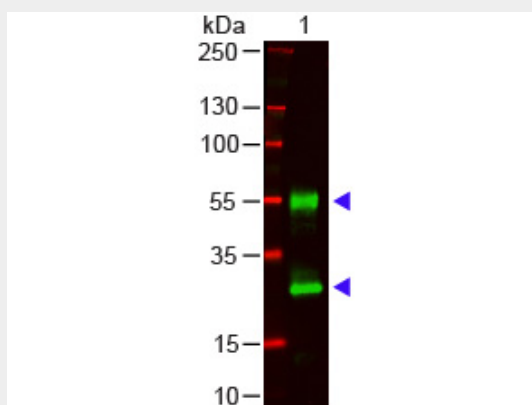
Anti-MOUSE IgG (H&L) Secondary Antibody - Protein Information

Anti-MOUSE IgG (H&L) Secondary Antibody - Protocols

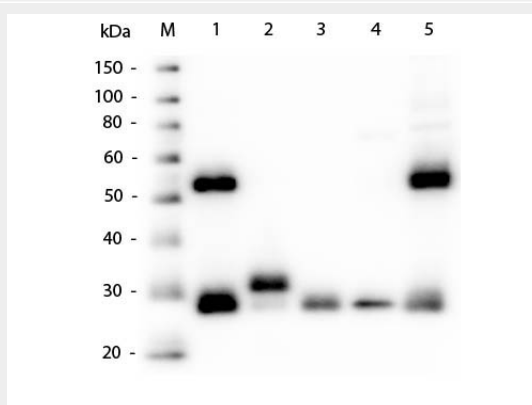
Provided below are standard protocols that you may find useful for product applications.

- [Western Blot](#)
- [Blocking Peptides](#)
- [Dot Blot](#)
- [Immunohistochemistry](#)
- [Immunofluorescence](#)
- [Immunoprecipitation](#)
- [Flow Cytometry](#)
- [Cell Culture](#)

Anti-MOUSE IgG (H&L) Secondary Antibody - Images



Western Blot of Goat anti-Mouse IgG (H&L) Antibody. Lane 1: Mouse IgG. Lane 2: None. Load: 100 ng per lane. Primary Antibody: Mouse IgG (H&L) Antibody 1:1000 overnight at 4°C. Secondary antibody: DyLight™ 800 goat secondary antibody at 1:20,000 for 30 min at RT. Block: MB-070 for 30 min at RT. Predicted/Obsevered Size: 28 and 55 kDa/28 and 55 kDa for Mouse IgG. Other band(s): none.



Western Blot of Goat Anti-Mouse IgG (H&L) Antibody. Lane M: Molecular Ladder. Lane 1: Mouse IgG whole molecule. Lane 2: Mouse IgG F(c) Fragment. Lane 3: Mouse IgG F(ab) Fragment. Lane 4: Mouse IgM Kappa. Lane 5: Mouse Serum. Load: 50ng per lane. Block: MB-070 for 30 min at RT. Primary Antibody: Anti-Mouse IgG (H&L) Antibody 1:1000 for 60 min at RT. Secondary antibody: HRP Donkey Anti-Goat IgG 1:40,000 for 30 min at RT . Predicted/Obsevered Size: 28 and 55 kDa for Mouse IgG, F(c), F(ab), IgM Kappa, and Serum. Mouse F(c) migrates slightly higher.

Anti-MOUSE IgG (H&L) Secondary Antibody - Background

Anti-Mouse IgG affinity purified secondary antibody is generated in goat detects specifically Mouse IgG whole molecule . This secondary antibody anti-Mouse is ideal for investigators who routinely perform ELISA, Sandwich ELISA, titration assays, western-blot, immunoprecipitation and more generally immunoassays.