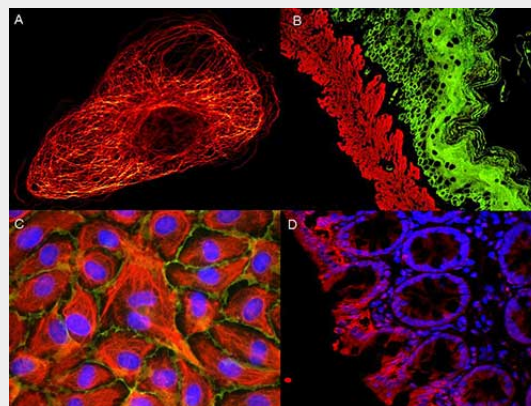


Anti-Mouse IgG (H&L) (ATTO 425 Conjugated) Pre-Adsorbed Secondary Antibody
Goat Polyclonal, ATTO 425
Catalog # ASR1151

Specification

Anti-Mouse IgG (H&L) (ATTO 425 Conjugated) Pre-Adsorbed Secondary Antibody - Product Information

Description	Anti-MOUSE IgG (H&L) (GOAT) Antibody ATTO 425 Conjugated (Min X Bv Ch Gt GP Ham Hs Hu Rb Rt & Sh Serum Proteins)
Host Conjugate FP Value	Goat ATTO 425 2.2 moles ATTO 425 per mole of IgG
Target Species Clonality Application Application Note	Mouse Polyclonal ,1,3, FLISA >1:20,000;IF Microscopy >1:5,000;Western Blot >1:10,000 Lyophilized IgG IgG (H&L) 0.02 M Potassium Phosphate, 0.15 M Sodium Chloride, pH 7.2 Mouse IgG whole molecule 100 µL
Physical State Host Isotype Target Isotype Buffer	IgG (H&L) 0.02 M Potassium Phosphate, 0.15 M Sodium Chloride, pH 7.2 Mouse IgG whole molecule
Immunogen	Mouse IgG whole molecule
Reconstitution Volume Reconstitution Buffer	100 µL Restore with deionized water (or equivalent)
Stabilizer	10 mg/mL Bovine Serum Albumin (BSA) - Immunoglobulin and Protease free
Preservative	0.01% (w/v) Sodium Azide



ATTO ® dyes can be used for multicolor immunofluorescent detection with low background and high signal. Examples shown are: A. Tubulin in PtK2- male Rat Kangaroo Kidney Epithelial Cells was detected using ATTO 532 labeled secondary antibody. B. Muscle alpha-actin was stained with a mouse primary antibody and ATTO 488 anti-mouse IgG (green) while Cytokeratin was stained with polyclonal rabbit anti-cytokeratin and ATTO 647N anti-rabbit IgG (red). C. HUVEC (Human umbilical vein endothelial cells were stained with anti- Vimentin-ATTO 532 (green), anti-E-Cadherin-ATTO 655 (red) and DAPI (blue). D. Rat colon sections were stained with Anti-Aquaporin 3-ATTO 594 antibody. Hoechst 33342 (blue) is used as counterstain. Images provided courtesy of Dr. Jörg Reichwein, ATTO-TEC GmbH

**Anti-Mouse IgG (H&L) (ATTO 425 Conjugated)
 Pre-Adsorbed Secondary Antibody - Additional
 Information**

Shipping Condition
 Ambient

Purity
 Mouse IgG (H&L) Antibody ATTO 425 was prepared from monospecific antiserum by immunoaffinity chromatography using Rat IgG coupled to agarose beads followed by solid phase adsorption(s) to remove any unwanted reactivities. Assay by immunoelectrophoresis resulted in a single precipitin arc against anti-Goat Serum, Rat IgG and Rat Serum. No reaction was observed against Bovine, Chicken, Goat, Guinea Pig, Hamster, Horse, Human, Mouse, Rabbit and Sheep Serum Proteins. This antibody will react with heavy chains of rat IgG and with light chains of most rat immunoglobulins.

Storage Condition
 Store vial at 4° C prior to restoration. For extended storage aliquot contents and freeze at -20° C or below. Avoid cycles of freezing and thawing. Centrifuge product if not completely clear after standing at room temperature. This product is stable for several weeks at 4° C as an undiluted liquid. Dilute only prior to immediate use.

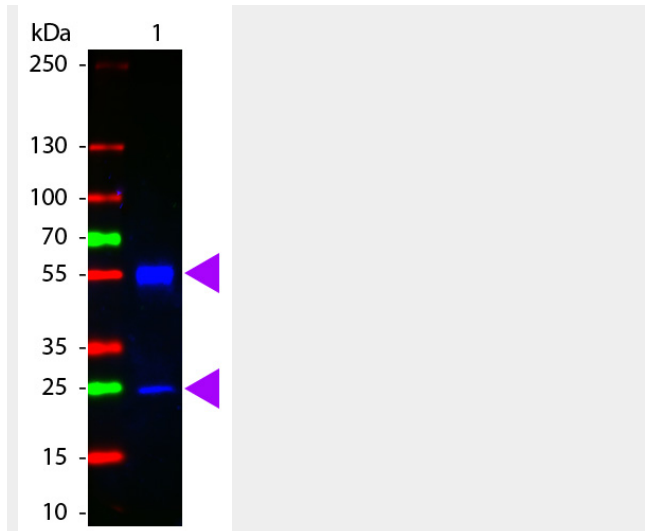
Precautions Note
 This product is for research use only and is not intended for therapeutic or diagnostic applications.

**Anti-Mouse IgG (H&L) (ATTO 425 Conjugated)
 Pre-Adsorbed Secondary Antibody - Protein
 Information**

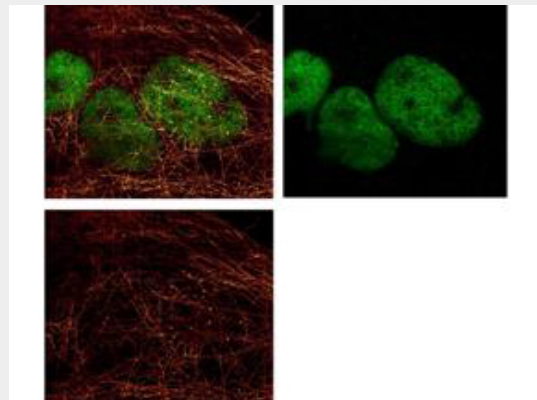
**Anti-Mouse IgG (H&L) (ATTO 425
 Conjugated) Pre-Adsorbed Secondary
 Antibody - Protocols**

Provided below are standard protocols that you may find useful for product applications.

- [Western Blot](#)
- [Blocking Peptides](#)
- [Dot Blot](#)



Western Blot of ATTO 425 conjugated Goat anti-Mouse IgG antibody. Lane 1: Mouse IgG. Lane 2: none. Load: 50 ng per lane. Primary antibody: none. Secondary antibody: ATTO 425 mouse secondary antibody at 1:1,000 for 60 min at RT. Block: MB-070 for 30 min RT. Predicted/Observed size: 55 kDa, 28 kDa for Mouse IgG. Other band(s): none.



ATTO ® dyes can be used for multicolor immunofluorescent detection with low background and high signal. Examples shown are: A. Tubulin in PtK2- male Rat Kangaroo Kidney Epithelial Cells was detected using ATTO 532 labeled secondary antibody. B. Muscle alpha-actin was stained with a mouse primary antibody and ATTO 488 anti-mouse IgG (green) while Cytokeratin was stained with polyclonal rabbit anti-cytokeratin and ATTO 647N anti-rabbit IgG (red). C. HUVEC (Human umbilical vein endothelial cells) were stained with anti- Vimentin-ATTO 532 (green), anti-E-Cadherin-ATTO 655 (red) and DAPI (blue). D. Rat colon sections were stained with Anti-Aquaporin 3-ATTO 594 antibody. Hoechst 33342 (blue) is used as

- [Immunohistochemistry](#)
- [Immunofluorescence](#)
- [Immunoprecipitation](#)
- [Flow Cytometry](#)
- [Cell Culture](#)

counterstain. Images provided courtesy of Dr. Jörg Reichwein, ATTO-TEC GmbH

Anti-Mouse IgG (H&L) (ATTO 425 Conjugated) Pre-Adsorbed Secondary Antibody - Background

Anti-Mouse IgG (H&L) conjugated by ATTO 425 is designed for STED microscopy, FRET, immunofluorescence microscopy, fluorescence based plate assays (FLISA) and fluorescent western blotting. This product is also suitable for multiplex analysis, including multicolor imaging, utilizing various commercial platforms.