

**Anti-Sheep IgG (H&L) (Fluorescein Conjugated) Secondary Antibody**  
**Donkey Polyclonal, Fluorescein (FITC)**  
**Catalog # ASR1182****Specification****Anti-Sheep IgG (H&L) (Fluorescein Conjugated) Secondary Antibody - Product Information**

Description	<b>Anti-SHEEP IgG (H&amp;L) (DONKEY) Antibody</b> <b>Fluorescein Conjugated</b>
Host	<b>Donkey</b>
Conjugate	<b>Fluorescein (FITC)</b>
FP Value	<b>2.4 moles Fluorescein (FITC) per mole of IgG</b>
Target Species	<b>Sheep</b>
Clonality	<b>Polyclonal</b>
Application	<b>IF, FC</b>
Application Note	<b>FLISA 1:10,000-1:50,000;IF Microscopy 1:1,000-1:5,000;FlowCytometry 1:500-1:2,500</b>
Physical State	<b>Lyophilized</b>
Host Isotype	<b>IgG</b>
Target Isotype	<b>IgG (H&amp;L)</b>
Buffer	<b>0.02 M Potassium Phosphate, 0.15 M Sodium Chloride, pH 7.2</b>
Immunogen	<b>Sheep IgG whole molecule</b>
Reconstitution Volume	<b>1.0 mL</b>
Reconstitution Buffer	<b>Restore with deionized water (or equivalent)</b>
Stabilizer	<b>10 mg/mL Bovine Serum Albumin (BSA) - Immunoglobulin and Protease free</b>
Preservative	<b>0.01% (w/v) Sodium Azide</b>

**Anti-Sheep IgG (H&L) (Fluorescein Conjugated) Secondary Antibody - Additional Information****Shipping Condition**

Ambient

**Purity**

This product was prepared from monospecific antiserum by immunoaffinity chromatography using Sheep IgG coupled to agarose beads. Assay by immunoelectrophoresis resulted in a single precipitin arc against anti-Fluorescein, anti-Donkey Serum, Sheep IgG and Sheep Serum.

**Storage Condition**

Store vial at 4° C prior to restoration. For extended storage aliquot contents and freeze at -20° C or below. Avoid cycles of freezing and thawing. Centrifuge product if not completely clear after standing at room temperature. This product is stable for several weeks at 4° C as an undiluted liquid. Dilute only prior to immediate use.

**Precautions Note**

This product is for research use only and is not intended for therapeutic or diagnostic applications.

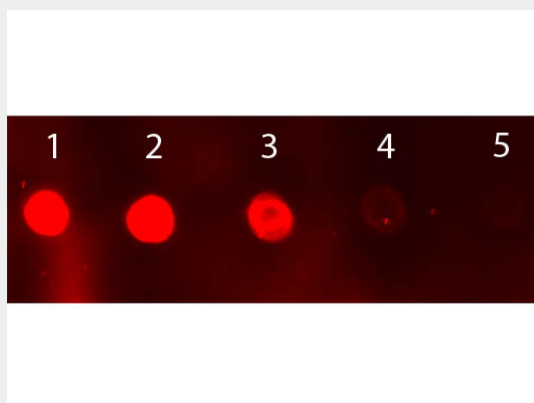
### **Anti-Sheep IgG (H&L) (Fluorescein Conjugated) Secondary Antibody - Protein Information**

### **Anti-Sheep IgG (H&L) (Fluorescein Conjugated) Secondary Antibody - Protocols**

Provided below are standard protocols that you may find useful for product applications.

- [Western Blot](#)
- [Blocking Peptides](#)
- [Dot Blot](#)
- [Immunohistochemistry](#)
- [Immunofluorescence](#)
- [Immunoprecipitation](#)
- [Flow Cytometry](#)
- [Cell Culture](#)

### **Anti-Sheep IgG (H&L) (Fluorescein Conjugated) Secondary Antibody - Images**



Dot Blot of Sheep IgG Antibody Fluorescein Conjugated. Antigen: Sheep IgG Load: Lane 1 - 50 ng Lane 2 - 16.67 ng Lane 3 - 5.56 ng Lane 4 - 1.85 ng Lane 5 - 0.62 ng. Primary antibody: none. Secondary antibody: Sheep IgG Antibody Fluorescein Conjugated 1:1,000 for 60 min at RT. Block: MB-070 for 1 HR at RT.

### **Anti-Sheep IgG (H&L) (Fluorescein Conjugated) Secondary Antibody - Background**

This product is designed for immunofluorescence microscopy, fluorescence based plate assays (FLISA) and fluorescent western blotting. This product is also suitable for multiplex analysis, including multicolor imaging, utilizing various commercial platforms.