

Anti-Mouse IgG (H&L) (Fluorescein Conjugated) Secondary Antibody
Sheep Polyclonal, Fluorescein (FITC)
Catalog # ASR1421**Specification****Anti-Mouse IgG (H&L) (Fluorescein Conjugated) Secondary Antibody - Product Information**

Description	Anti-MOUSE IgG (H&L) (SHEEP) Antibody
Host	Fluorescein Conjugated
Conjugate	Sheep
FP Value	Fluorescein (FITC)
Target Species	3.2 moles Fluorescein (FITC) per mole of IgG
Clonality	Mouse
Application	Polyclonal
Application Note	IF, FC
Physical State	FLISA 1:10,000-1:50,000;IF Microscopy
Host Isotype	1:1,000-1:5,000;FlowCytometry
Target Isotype	1:500-1:2,500
Buffer	Lyophilized
Immunogen	IgG
Reconstitution Volume	IgG (H&L)
Reconstitution Buffer	0.02 M Potassium Phosphate, 0.15 M Sodium Chloride, pH 7.2
Stabilizer	Mouse IgG whole molecule
Preservative	1.0 mL
	Restore with deionized water (or equivalent)
	10 mg/mL Bovine Serum Albumin (BSA) - Immunoglobulin and Protease free
	0.01% (w/v) Sodium Azide

Anti-Mouse IgG (H&L) (Fluorescein Conjugated) Secondary Antibody - Additional Information**Shipping Condition**

Ambient

Purity

This product was prepared from monospecific antiserum by immunoaffinity chromatography using Mouse IgG coupled to agarose beads followed by solid phase adsorption(s) to remove any unwanted reactivities. Assay by immunoelectrophoresis resulted in a single precipitin arc against anti-Fluorescein, anti-Sheep Serum, Mouse IgG and Mouse Serum.

Storage Condition

Store vial at 4° C prior to restoration. For extended storage aliquot contents and freeze at -20° C or below. Avoid cycles of freezing and thawing. Centrifuge product if not completely clear after standing at room temperature. This product is stable for several weeks at 4° C as an undiluted liquid. Dilute only prior to immediate use.

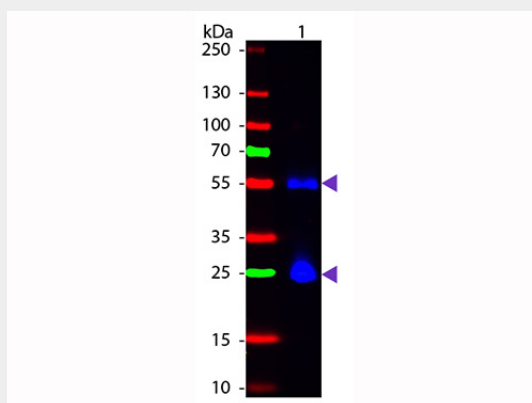
Precautions Note

This product is for research use only and is not intended for therapeutic or diagnostic applications.

Anti-Mouse IgG (H&L) (Fluorescein Conjugated) Secondary Antibody - Protein Information**Anti-Mouse IgG (H&L) (Fluorescein Conjugated) Secondary Antibody - Protocols**

Provided below are standard protocols that you may find useful for product applications.

- [Western Blot](#)
- [Blocking Peptides](#)
- [Dot Blot](#)
- [Immunohistochemistry](#)
- [Immunofluorescence](#)
- [Immunoprecipitation](#)
- [Flow Cytometry](#)
- [Cell Culture](#)

Anti-Mouse IgG (H&L) (Fluorescein Conjugated) Secondary Antibody - Images

Western Blot of Fluorescein Sheep Anti-Mouse IgG secondary antibody. Lane 1: Mouse IgG. Lane 2: None. Load: 50 ng per lane. Primary antibody: None. Secondary antibody: Fluorescein sheep secondary antibody at 1:1,000 for 60 min at RT. Blocking: MB-070 for 30 min at RT. Predicted/Observed size: 25 & 55 kDa, 25 & 55 kDa for Mouse IgG. Other band(s): None.

Anti-Mouse IgG (H&L) (Fluorescein Conjugated) Secondary Antibody - Background

This product is designed for immunofluorescence microscopy, fluorescence based plate assays (FLISA) and fluorescent western blotting. This product is also suitable for multiplex analysis, including multicolor imaging, utilizing various commercial platforms.