

Mouse IgG Biotin
Catalog # ASR1495**Specification**

Mouse IgG Biotin - Product Information

Description	MOUSE IgG whole molecule Biotin conjugated
Conjugate	Biotin
Physical State	Lyophilized
Host Isotype	IgG
Buffer	0.02 M Potassium Phosphate, 0.15 M Sodium Chloride, pH 7.2
Species of Origin	Mouse
Reconstitution Volume	1.0 mL
Reconstitution Buffer	Restore with deionized water (or equivalent)

Mouse IgG Biotin - Additional Information**Shipping Condition**

Ambient

Purity

This product was prepared from normal serum delipidation, salt fractionation, ion exchange chromatography followed by papain digestion and extensive dialysis against the buffer stated above. Assay by immunoelectrophoresis resulted in a single precipitin arc against anti-biotin, anti-Mouse IgG and anti-Mouse Serum.

Storage Condition

Store vial at 4° C prior to restoration. For extended storage aliquot contents and freeze at -20° C or below. Avoid cycles of freezing and thawing. Centrifuge product if not completely clear after standing at room temperature. This product is stable for several weeks at 4° C as an undiluted liquid. Dilute only prior to immediate use.

Precautions Note

This product is for research use only and is not intended for therapeutic or diagnostic applications.

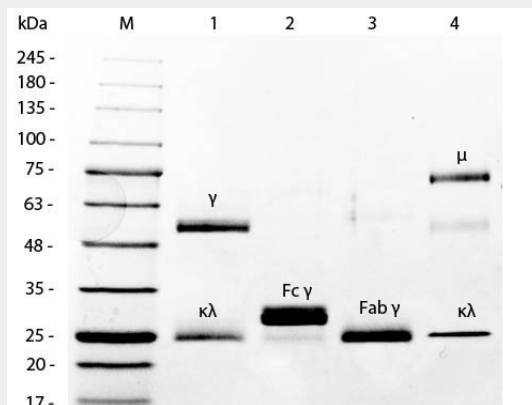
Mouse IgG Biotin - Protein Information**Mouse IgG Biotin - Protocols**

Provided below are standard protocols that you may find useful for product applications.

- [Western Blot](#)
- [Blocking Peptides](#)
- [Dot Blot](#)

- [Immunohistochemistry](#)
- [Immunofluorescence](#)
- [Immunoprecipitation](#)
- [Flow Cytometry](#)
- [Cell Culture](#)

Mouse IgG Biotin - Images



SDS-PAGE of Mouse IgG Whole Molecule Biotin Conjugated . Lane 1: 5 μ L Opal Prestained Marker . Lane 2: Reduced Mouse IgG Whole Molecule Biotin Conjugated . Lane 3: Reduced Mouse F(c) Fragment . Lane 4: Reduced Mouse F(ab) Fragment . Lane 5: Mouse IgM Kappa Myeloma Protein . Load: 1 μ g per lane. Predicted/Observed size: IgG at 50 and 25 kDa; F(c) at 25 kDa; F(ab) at 25 kDa; IgM K at 70 and 23 kDa. Observed F(c) Fragment migrates slightly higher.