

Anti-Bovine Serum Albumin BSA Secondary Antibody
Rabbit Polyclonal, Unconjugated
Catalog # ASR1522**Specification**

Anti-Bovine Serum Albumin BSA Secondary Antibody - Product Information

Description	Anti-BOVINE ALBUMIN (RABBIT) Antibody (BSA)
Host	Rabbit
Conjugate	Unconjugated
Target Species	Bovine
Reactivity	Bovine
Clonality	Polyclonal
Application	WB, E, IC
Application Note	ELISA 1:20,000-1:100,000;Western Blot 1:2,000-1:10,000;Immunochemistry 1:1,000-1:5,000
Physical State	Lyophilized
Host Isotype	Antiserum
Buffer	0.02 M Potassium Phosphate, 0.15 M Sodium Chloride, pH 7.2
Immunogen	Anti-Bovine Serum Albumin antibody was produced by repeated immunizations with Bovine Serum Albumin.
Reconstitution Volume	2.0 mL
Reconstitution Buffer	Restore with deionized water (or equivalent)
Stabilizer	None
Preservative	0.01% (w/v) Sodium Azide

Anti-Bovine Serum Albumin BSA Secondary Antibody - Additional Information**Shipping Condition****Ambient****Purity**

Bovine Serum Albumin antibody is supplied in the form of monospecific antiserum prepared by a delipidation and defibrination. Assay by immunoelectrophoresis resulted in a single precipitin arc against purified and partially purified Albumin [Bovine Serum]. Cross reactivity against Albumin from other tissues and species may occur but have not been specifically determined.

Storage Condition

Store vial at 4° C prior to restoration. For extended storage aliquot contents and freeze at -20° C or below. Avoid cycles of freezing and thawing. Centrifuge product if not completely clear after standing at room temperature. This product is stable for several weeks at 4° C as an undiluted liquid. Dilute only prior to immediate use.

Precautions Note

This product is for research use only and is not intended for therapeutic or diagnostic applications.

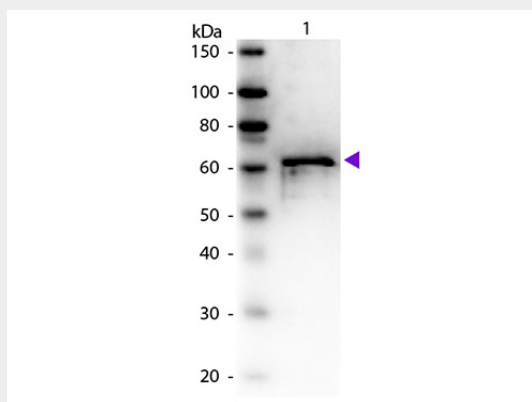
Anti-Bovine Serum Albumin BSA Secondary Antibody - Protein Information

Anti-Bovine Serum Albumin BSA Secondary Antibody - Protocols

Provided below are standard protocols that you may find useful for product applications.

- [Western Blot](#)
- [Blocking Peptides](#)
- [Dot Blot](#)
- [Immunohistochemistry](#)
- [Immunofluorescence](#)
- [Immunoprecipitation](#)
- [Flow Cytometry](#)
- [Cell Culture](#)

Anti-Bovine Serum Albumin BSA Secondary Antibody - Images



Western Blot of Rabbit anti-Bovine Serum Albumin antibody. Lane 1: BSA. Lane 2: None. Load: 50 ng per lane. Primary antibody: BSA antibody at 1:1,000 for overnight at 4°C. Secondary antibody: Peroxidase rabbit secondary antibody at 1:40,000 for 30 min at RT. Block: 5% BLOTTO-TBS for 30 min at RT. Predicted/Observed size: 66 kDa, 66 kDa for BSA. Other band(s): None.

Anti-Bovine Serum Albumin BSA Secondary Antibody - Background

Anti-Bovine Serum Albumin antibody detects BSA. Serum albumin is the main protein of plasma. It has a good binding capacity for water, Ca²⁺, Na⁺, K⁺, fatty acids, hormones, bilirubin and drugs. Its main function is the regulation of the colloidal osmotic pressure of blood. ALB is the major zinc transporter in plasma; it typically binds about 80% of all plasma zinc. BSA antibody is ideal for investigators involved in Cell Signaling, Neuroscience and Signal Transduction research.