

**Anti-Goat IgG (H&L) (Texas Red™ Conjugated) Secondary Antibody**  
**Donkey Polyclonal, Texas Red®**  
**Catalog # ASR1569****Specification****Anti-Goat IgG (H&L) (Texas Red™ Conjugated) Secondary Antibody - Product Information**

|                       |  |
|-----------------------|--|
| Description           | <b>Anti-GOAT IgG (H&amp;L) (DONKEY) Antibody</b><br><b>Texas Red™ Conjugated</b>                             |
| Host                  | <b>Donkey</b>  |
| Conjugate             | <b>Texas Red®</b>  |
| FP Value              | <b>3.5 moles Texas Red® per mole of IgG</b>  |
| Target Species        | <b>Goat</b>  |
| Clonality             | <b>Polyclonal</b>  |
| Application           | <b>IF, FC</b>  |
| Application Note      | <b>FLISA 1:10,000-1:50,000;IF Microscopy</b><br><b>1:1,000-1:5,000;FlowCytometry</b><br><b>1:500-1:2,500</b> |
| Physical State        | <b>Lyophilized</b>   |
| Host Isotype          | <b>IgG</b>   |
| Target Isotype        | <b>IgG (H&amp;L)</b>   |
| Buffer                | <b>0.02 M Potassium Phosphate, 0.15 M</b><br><b>Sodium Chloride, pH 7.2</b>                                  |
| Immunogen             | <b>Goat IgG whole molecule</b>   |
| Reconstitution Volume | <b>1.0 mL</b>  |
| Reconstitution Buffer | <b>Restore with deionized water (or</b><br><b>equivalent)</b>  |
| Stabilizer            | <b>10 mg/mL Bovine Serum Albumin (BSA) -</b><br><b>Immunoglobulin and Protease free</b>                      |
| Preservative          | <b>0.01% (w/v) Sodium Azide</b>  |

**Anti-Goat IgG (H&L) (Texas Red™ Conjugated) Secondary Antibody - Additional Information****Shipping Condition**

Ambient

**Purity**

This product was prepared from monospecific antiserum by immunoaffinity chromatography using Goat IgG coupled to agarose beads followed by solid phase adsorption(s) to remove any unwanted reactivities. Assay by immunoelectrophoresis resulted in a single precipitin arc against anti-Donkey Serum, Goat IgG and Goat Serum.

**Storage Condition**

Store vial at 4° C prior to restoration. For extended storage aliquot contents and freeze at -20° C or below. Avoid cycles of freezing and thawing. Centrifuge product if not completely clear after standing at room temperature. This product is stable for several weeks at 4° C as an undiluted liquid. Dilute only prior to immediate use.

**Precautions Note**

This product is for research use only and is not intended for therapeutic or diagnostic applications.

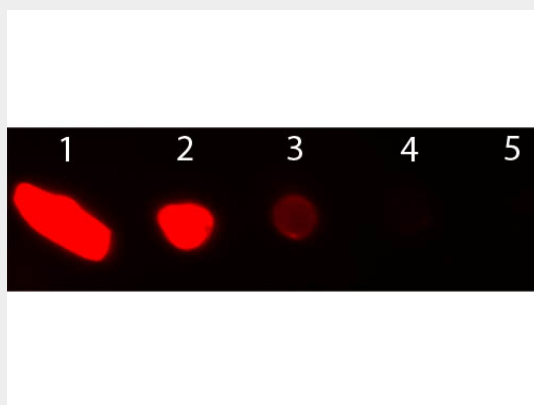
## **Anti-Goat IgG (H&L) (Texas Red™ Conjugated) Secondary Antibody - Protein Information**

## **Anti-Goat IgG (H&L) (Texas Red™ Conjugated) Secondary Antibody - Protocols**

Provided below are standard protocols that you may find useful for product applications.

- [Western Blot](#)
- [Blocking Peptides](#)
- [Dot Blot](#)
- [Immunohistochemistry](#)
- [Immunofluorescence](#)
- [Immunoprecipitation](#)
- [Flow Cytometry](#)
- [Cell Culture](#)

## **Anti-Goat IgG (H&L) (Texas Red™ Conjugated) Secondary Antibody - Images**



Dot Blot of Donkey anti-Goat IgG Antibody Texas Red Conjugated. Antigen: Goat IgG. Load: Lane 1 - 200 ng Lane 2 - 66.7 ng Lane 3 - 22.2 ng Lane 4 - 7.41 ng Lane 5 - 2.47 ng. Primary antibody: n/a. Secondary antibody: Donkey anti-Goat IgG Antibody Texas Red Conjugated at 1:1,000 for 60 min at RT. Block: MB-070 for 60 min at RT.

## **Anti-Goat IgG (H&L) (Texas Red™ Conjugated) Secondary Antibody - Background**

This product is designed for immunofluorescence microscopy, fluorescence based plate assays (FLISA) and fluorescent western blotting. This product is also suitable for multiplex analysis, including multicolor imaging, utilizing various commercial platforms.