

**Anti-Human IgG (H&L) Secondary Antibody**  
**Mouse Polyclonal, Unconjugated**  
**Catalog # ASR1599****Specification**

---

**Anti-Human IgG (H&L) Secondary Antibody - Product Information**

Description	<b>Anti-HUMAN IgG (H&amp;L) (MOUSE) Antibody</b>
Host	<b>Mouse</b>
Conjugate	<b>Unconjugated</b>
Target Species	<b>Human</b>
Reactivity	<b>Human</b>
Clonality	<b>Polyclonal</b>
Application	<b>,1,2,10,</b>
Application Note	<b>ELISA 1:5,000-1:50,000;Western Blot 1:500-1:5,000;Immunohistochemistry 1:1,000-1:5,000</b>
Physical State	<b>Liquid (sterile filtered)</b>
Host Isotype	<b>IgG</b>
Target Isotype	<b>IgG (H&amp;L)</b>
Buffer	<b>0.02 M Potassium Phosphate, 0.15 M Sodium Chloride, pH 7.2</b>
Immunogen	<b>Human IgG whole molecule</b>
Stabilizer	<b>None</b>
Preservative	<b>0.01% (w/v) Sodium Azide</b>

**Anti-Human IgG (H&L) Secondary Antibody - Additional Information****Shipping Condition**

Wet Ice

**Purity**

This product was prepared from monospecific polyclonal ascites by immunoaffinity chromatography using Human IgG coupled to agarose beads followed by solid phase adsorption(s) to remove any unwanted reactivities. Assay by immunoelectrophoresis resulted in a single precipitin arc against anti-Mouse Serum, Human IgG and Human Serum.

**Storage Condition**

Store vial at 4° C prior to opening. This product is stable for several weeks at 4° C as an undiluted liquid. Dilute only prior to immediate use. For extended storage aliquot contents and freeze at -20° C or below. Avoid cycles of freezing and thawing.

**Precautions Note**

This product is for research use only and is not intended for therapeutic or diagnostic applications.

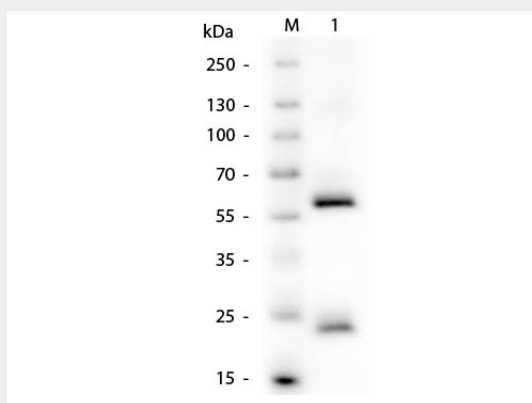
**Anti-Human IgG (H&L) Secondary Antibody - Protein Information**

## Anti-Human IgG (H&L) Secondary Antibody - Protocols

Provided below are standard protocols that you may find useful for product applications.

- [Western Blot](#)
- [Blocking Peptides](#)
- [Dot Blot](#)
- [Immunohistochemistry](#)
- [Immunofluorescence](#)
- [Immunoprecipitation](#)
- [Flow Cytometry](#)
- [Cell Culture](#)

## Anti-Human IgG (H&L) Secondary Antibody - Images



Western Blot of Human IgG Antibody. M: 3  $\mu$ L Opal Prestained Ladder (MB-210-0500). Lane 1: Human IgG. Load: 50 ng per lane. Primary antibody: Human IgG Antibody at 1:1,000 overnight at 4°C. Secondary antibody: Peroxidase conjugated mouse secondary antibody at 1:40,000 for 30 minutes at RT. Block: MB-070 for 30 minutes at RT. Predicted/Observed size: 55 kDa, 25 kDa for Human IgG.