

**Anti-Rat IgG (H&L) (Biotin Conjugated) Secondary Antibody**  
**Goat Polyclonal, Biotin**  
**Catalog # ASR1652****Specification****Anti-Rat IgG (H&L) (Biotin Conjugated) Secondary Antibody - Product Information**

Description	<b>Anti-RAT IgG (H&amp;L) (GOAT) Antibody Biotin Conjugated</b>
Host	<b>Goat</b>
Conjugate	<b>Biotin</b>
Target Species	<b>Rat</b>
Clonality	<b>Polyclonal</b>
Application	<b>,1,10,15,</b>
Application Note	<b>ELISA 1:20,000-1:100,000;Western Blot 1:2,000-1:10,000;Immunochemistry 1:1,000-1:5,000</b>
Physical State	<b>Lyophilized</b>
Host Isotype	<b>IgG</b>
Target Isotype	<b>IgG (H&amp;L)</b>
Buffer	<b>0.02 M Potassium Phosphate, 0.15 M Sodium Chloride, pH 7.2</b>
Immunogen	<b>Rat IgG whole molecule</b>
Reconstitution Volume	<b>1.0 mL</b>
Reconstitution Buffer	<b>Restore with deionized water (or equivalent)</b>
Stabilizer	<b>10 mg/mL Bovine Serum Albumin (BSA) - Immunoglobulin and Protease free</b>
Preservative	<b>0.01% (w/v) Sodium Azide</b>

**Anti-Rat IgG (H&L) (Biotin Conjugated) Secondary Antibody - Additional Information****Shipping Condition**

Ambient

**Purity**

Anti-RAT IgG Biotin Conjugated antibody was prepared from monospecific antiserum by immunoaffinity chromatography using Rat IgG coupled to agarose. Assay by immunoelectrophoresis resulted in a single precipitin arc against anti-biotin, anti-Goat Serum, Rat IgG and Rat Serum.

**Storage Condition**

Store vial at 4° C prior to restoration. For extended storage aliquot contents and freeze at -20° C or below. Avoid cycles of freezing and thawing. Centrifuge product if not completely clear after standing at room temperature. This product is stable for several weeks at 4° C as an undiluted liquid. Dilute only prior to immediate use.

**Precautions Note**

This product is for research use only and is not intended for therapeutic or diagnostic applications.

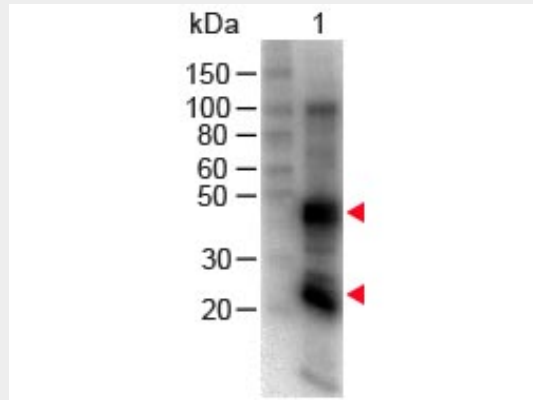
## Anti-Rat IgG (H&L) (Biotin Conjugated) Secondary Antibody - Protein Information

## Anti-Rat IgG (H&L) (Biotin Conjugated) Secondary Antibody - Protocols

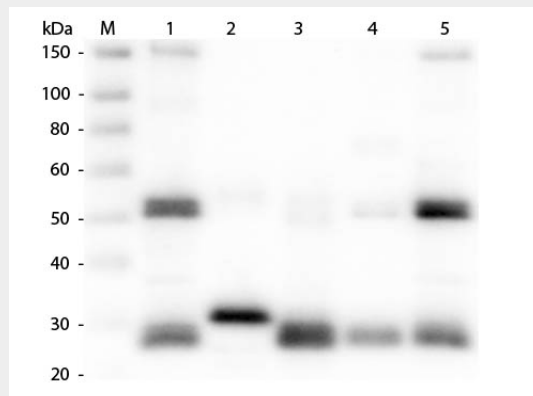
Provided below are standard protocols that you may find useful for product applications.

- [Western Blot](#)
- [Blocking Peptides](#)
- [Dot Blot](#)
- [Immunohistochemistry](#)
- [Immunofluorescence](#)
- [Immunoprecipitation](#)
- [Flow Cytometry](#)
- [Cell Culture](#)

## Anti-Rat IgG (H&L) (Biotin Conjugated) Secondary Antibody - Images



Western Blot of Goat anti-Rat IgG (H&L) Antibody Biotin Conjugated. Lane 1: Rat IgG. Load: 100 ng per lane. Primary antibody: Rat IgG (H&L) Antibody Biotin Conjugated at 1:1000 for 60 min RT. Secondary antibody: HRP Conjugated Streptavidin at 1:40,000 for 30 min at RT. Block: MB-070 for 30 min at RT.



Western Blot of Anti-Rat IgG (H&L) (GOAT) Antibody . Lane M: 3  $\mu$ l Molecular Ladder. Lane 1: Rat IgG whole molecule . Lane 2: Rat IgG F(c) Fragment . Lane 3: Rat IgG F(ab) Fragment . Lane 4: Rat IgM Whole Molecule . Lane 5: Rat Serum . All samples were reduced. Load: 50 ng per lane. Block: MB-070 for 30 min at RT. Primary Antibody: Anti-Rat IgG (H&L) (GOAT) Antibody 1:1,000 for 60 min at RT. Secondary Antibody: Anti-Goat IgG (DONKEY) Peroxidase Conjugated Antibody

1:40,000 in MB-070 for 30 min at RT. Predicted/Observed Size: 25 and 55 kDa for Rat IgG and Serum, 25 kDa for F(c) and F(ab), 78 and 25 kDa for IgM. Rat F(c) migrates slightly higher.

#### **Anti-Rat IgG (H&L) (Biotin Conjugated) Secondary Antibody - Background**

RAT IgG Biotin Conjugated antibody detects rat immunoglobulin G. Immunoglobulin G is a molecule of about 150 kDa composed of four peptide chains. Each IgG contains two identical heavy chains of about 51 kDa and two identical light chains of about 26 kDa, thus a tetrameric quaternary structure. The two heavy chains are linked to each other and to a light chain each by disulfide bonds. The resulting tetramer has two identical halves, which together form the Y-like shape. Each end of the fork contains an identical antigen binding site. The Fc regions of IgGs bear a highly conserved N-glycosylation site.