

**Anti-Sheep IgG (H&L) (Texas Red™ Conjugated) Secondary Antibody**  
**Donkey Polyclonal, Texas Red®**  
**Catalog # ASR1671****Specification****Anti-Sheep IgG (H&L) (Texas Red™ Conjugated) Secondary Antibody - Product Information**

Description	<b>Anti-SHEEP IgG (H&amp;L) (DONKEY) Antibody</b> <b>Texas Red™ Conjugated</b>
Host	<b>Donkey</b>
Conjugate	<b>Texas Red®</b>
FP Value	<b>4.7 moles Texas Red® per mole of IgG</b>
Target Species	<b>Sheep</b>
Clonality	<b>Polyclonal</b>
Application	<b>IF, FC</b>
Application Note	<b>FLISA 1:10,000-1:50,000;IF Microscopy</b> <b>1:1,000-1:5,000;FlowCytometry</b> <b>1:500-1:2,500</b>
Physical State	<b>Lyophilized</b>
Host Isotype	<b>IgG</b>
Target Isotype	<b>IgG (H&amp;L)</b>
Buffer	<b>0.02 M Potassium Phosphate, 0.15 M</b> <b>Sodium Chloride, pH 7.2</b>
Immunogen	<b>Sheep IgG whole molecule</b>
Reconstitution Volume	<b>1.0 mL</b>
Reconstitution Buffer	<b>Restore with deionized water (or</b> <b>equivalent)</b>
Stabilizer	<b>10 mg/mL Bovine Serum Albumin (BSA) -</b> <b>Immunoglobulin and Protease free</b>
Preservative	<b>0.01% (w/v) Sodium Azide</b>

**Anti-Sheep IgG (H&L) (Texas Red™ Conjugated) Secondary Antibody - Additional Information****Shipping Condition**

Ambient

**Purity**

Sheep IgG (H&L) Antibody Texas Red™ Conjugated was prepared from monospecific antiserum by immunoaffinity chromatography using Sheep IgG coupled to agarose beads followed by solid phase adsorption(s) to remove any unwanted reactivities. Assay by immunoelectrophoresis resulted in a single precipitin arc against anti-Donkey Serum, Sheep IgG and Sheep Serum.

**Storage Condition**

Store vial at 4° C prior to restoration. For extended storage aliquot contents and freeze at -20° C or below. Avoid cycles of freezing and thawing. Centrifuge product if not completely clear after standing at room temperature. This product is stable for several weeks at 4° C as an undiluted liquid. Dilute only prior to immediate use.

**Precautions Note**

This product is for research use only and is not intended for therapeutic or diagnostic applications.

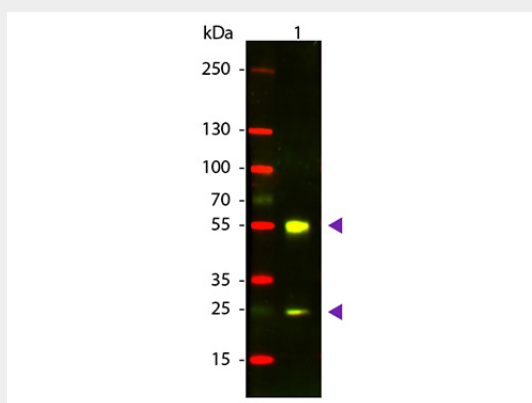
### **Anti-Sheep IgG (H&L) (Texas Red™ Conjugated) Secondary Antibody - Protein Information**

### **Anti-Sheep IgG (H&L) (Texas Red™ Conjugated) Secondary Antibody - Protocols**

Provided below are standard protocols that you may find useful for product applications.

- [Western Blot](#)
- [Blocking Peptides](#)
- [Dot Blot](#)
- [Immunohistochemistry](#)
- [Immunofluorescence](#)
- [Immunoprecipitation](#)
- [Flow Cytometry](#)
- [Cell Culture](#)

### **Anti-Sheep IgG (H&L) (Texas Red™ Conjugated) Secondary Antibody - Images**



Western Blot of Donkey anti-Sheep IgG Texas Red Conjugated Antibody. Lane 1: Sheep IgG. Lane 2: None. Load: 50 ng per lane. Primary antibody: None. Secondary antibody: Texas Red donkey secondary antibody at 1:1,000 for 60 min at RT. Block: MB-070 for 30 min at RT. Predicted/Observed size: 28 & 55 kDa, 28 & 55 kDa for Sheep IgG. Other band(s): None.

### **Anti-Sheep IgG (H&L) (Texas Red™ Conjugated) Secondary Antibody - Background**

Sheep IgG (H&L) Antibody Texas Red™ Conjugated antibodies are designed for immunofluorescence microscopy, fluorescence based plate assays (FLISA) and fluorescent western blotting. This product is also suitable for multiplex analysis, including multicolor imaging, utilizing various commercial platforms.